

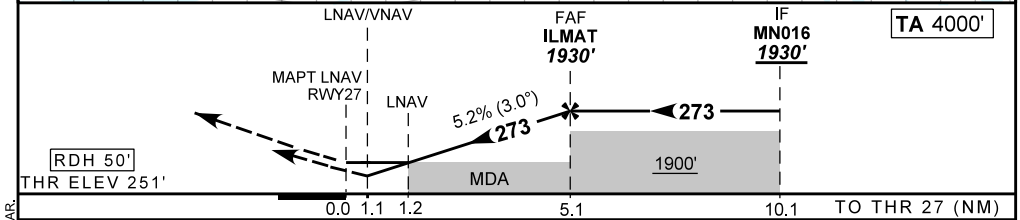
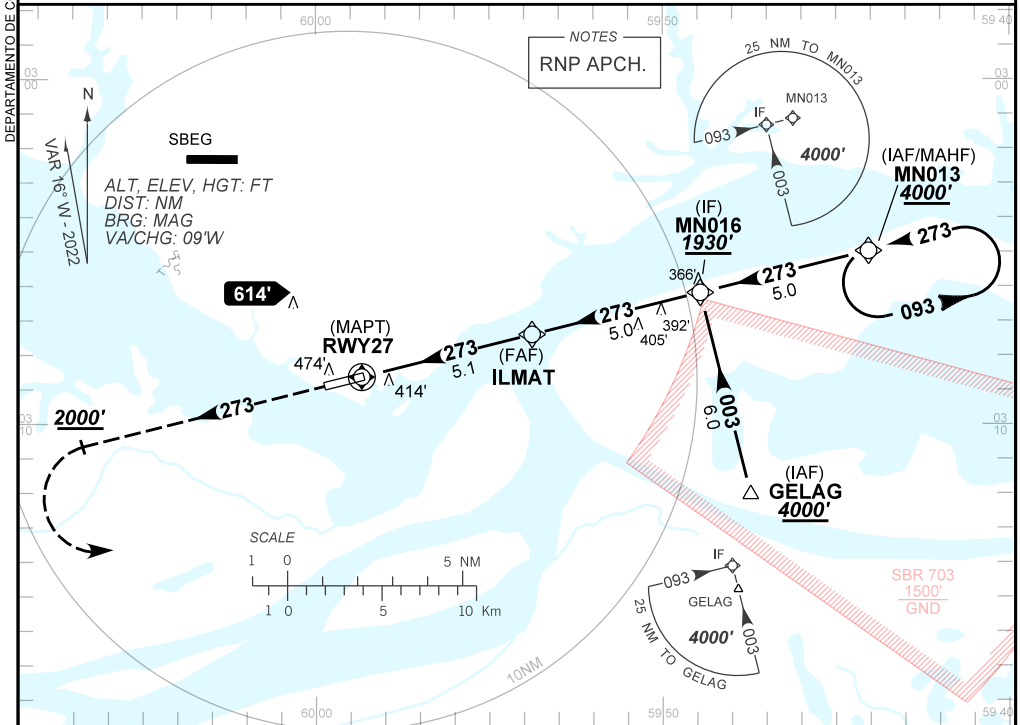
**INSTRUMENT APPROACH
CHART (IAC)**

MANAUS / Ponta Pelada, MIL (SBMN)

AD ELEV: 257'

RNP RWY 27

| | | | |
|---|---|---|---|
| ATIS NIL | APP MANAUS 119.25 119.70 120.40 | TWR PONTA PELADA 118.60 | GNDC NIL |
| TEMP LNAV/VNAV MIN 0°C / MAX 50°C | FINAL CRS 272° | FAF: 1930' | LNAV/VNAV DA / (OCH): 653' / (410') |
| APCH Perdida: Subir para 4000' . Manter o rumo 273 até 2000' . Após, curvar à ESQUERDA para espera em MN013. | | LNAV MDA / (OCH): 670' / (420') | |
| Missed APCH: Climb to 4000' . Maintain course 273 until 2000' . After, turn LEFT for holding at MN013. | | | |



| | | | | | | | | | | | | | |
|-------|-----|-----|------|------|-------|--|-------------------|-----|-----|-----|-----|-----|------|
| RWY27 | 1.2 | 2.0 | 3.0 | 4.0 | ILMAT | | Ground Speed (KT) | 090 | 110 | 130 | 150 | 170 | 190 |
| ALT | 670 | 938 | 1256 | 1575 | 1930 | | FPM | 500 | 600 | 700 | 800 | 900 | 1000 |
| (HGT) | 420 | 687 | 1005 | 1324 | 1679 | | FAF-MAPT | NIL | | | | | |

| | | | | | | |
|-------------|-------------------------|------------------|---|------------------|---|----|
| STRAIGHT-IN | CAT | A | B | C | D | E |
| | DA / (OCH) | 653' / (410') | | | | NA |
| LNAV/VNAV | ALS/NO ALS/ RVR ALS (m) | NIL / 1600 / NIL | | NIL / 1900 / NIL | | |
| | MDA / (OCH) | 670' / (420') | | | | |
| LNAV | ALS/NO ALS/ RVR ALS (m) | NIL / 1600 / NIL | | NIL / 1900 / NIL | | |
| | MDA / (OCH) | NA | | | | |
| CIRCLING | MDA / (OCH) | NA | | | | |
| | VIS (m) | NA | | | | |

CHANGES: IDENT, LAYOUT, THR ELEV, VAR.

DEPARTAMENTO DE CONTROLE DO ESPAÇO AÉREO