

**INSTRUMENT APPROACH
CHART (IAC)**

CURITIBA / Afonso Pena, INTL (SBCT)

AD ELEV: 2989'

ILS X CAT I & II RWY 15

D-ATIS 127.80	APP CURITIBA 119.70 119.95 120.65 120.95 129.55 133.15			TWR CURITIBA 118.15	GNDC CURITIBA 121.90
-------------------------	--	--	--	-------------------------------	--------------------------------

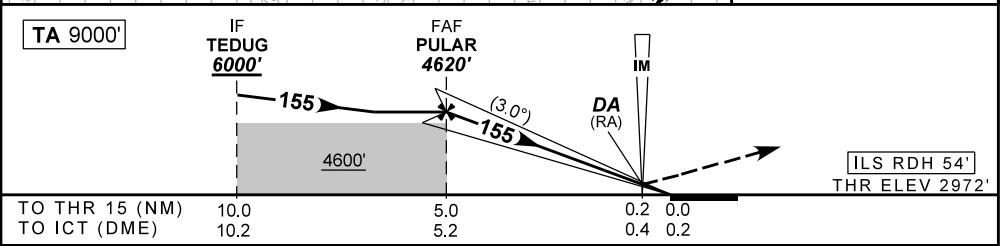
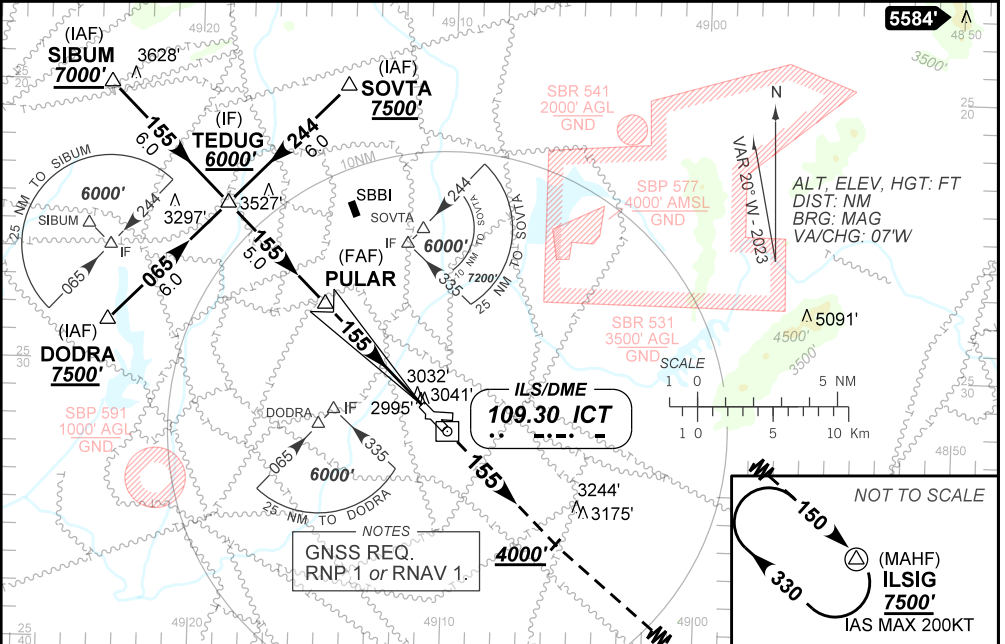
ILS/DME ICT 109.30 MHz	FINAL CRS 155°	FAF: 4620'	CAT I & CAT II DA / (OCH): REFER TO MNM	N/A
----------------------------------	--------------------------	----------------------	---	------------

APCH Perdida: Subir para **7500'**. Manter proa **155** até **4000'**. Após, curva à ESQUERDA direto ILSIG para espera.

Missed APCH: Climb to **7500'**. Maintain heading **155** until **4000'**. After, turn LEFT direct ILSIG for holding.

RMK: (*)VIS RVR ALS 550m para APCH utilizando Diretor de Voo, Piloto Automático ou Head-Up Display (HUD).
(*)VIS RVR ALS 550m for APCH using a Flight Director, Autopilot or Head-Up Display (HUD).

DEPARTAMENTO DE CONTROLE DO ESPAÇO AÉREO



	NIL	RWY15	Ground Speed (KT)	090	110	130	150	170	190
	NIL	ALT	FPM				NIL		
	NIL	(HGT)	FAF-MAPT				NIL		

STRAIGHT-IN	CAT	A	B	C	D	E
CAT II	DA / (OCH) / RA		3079' / (107') / 110'			NA
	ALS/NO ALS/ RVR ALS (m)		NIL / NIL / 350			
CAT I	DA / (OCH)		3172' / (200')			NA
	ALS/NO ALS/ RVR ALS (m)		800 / 1200 / 700(*)			

CHANGES: FREQ, PROC, TAA, VAR.