

**INSTRUMENT APPROACH CHART (IAC)**

**RIO DE JANEIRO / Galeão - Antônio Carlos Jobim, INTL (SBGL)**

**VOR RWY 33**

**AD ELEV: 28'**

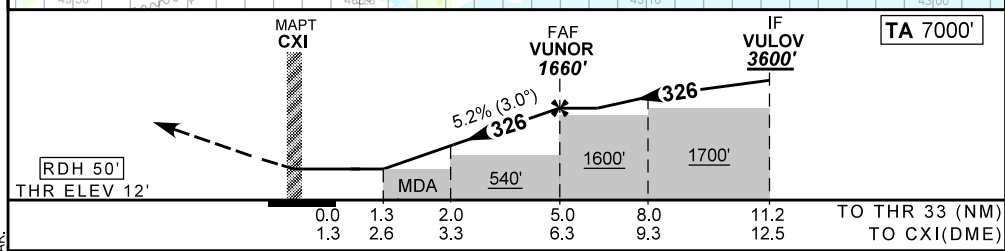
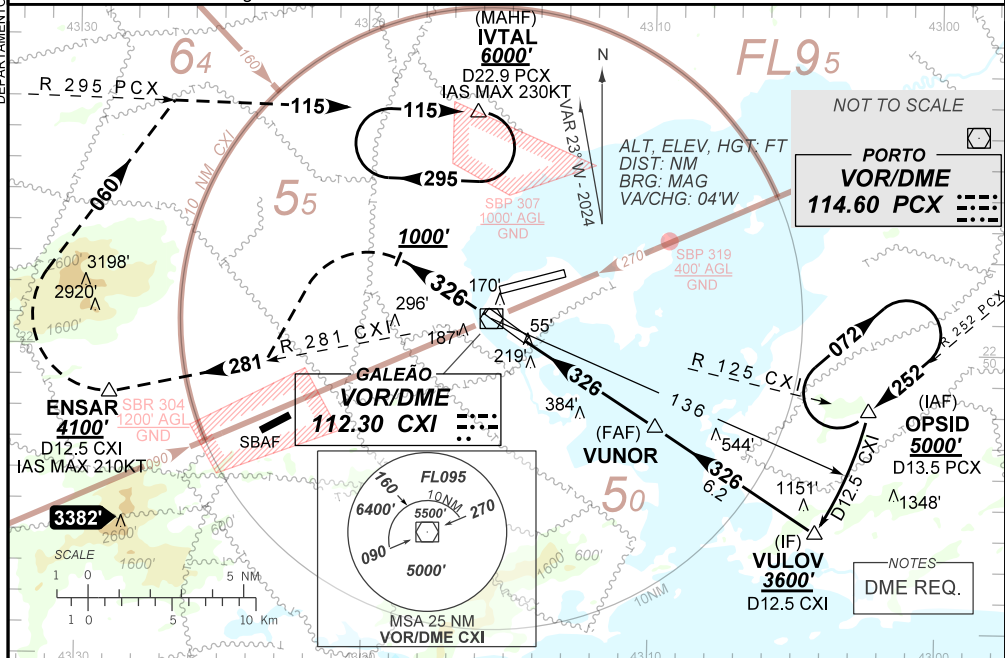
D-ATIS <b>127.60</b>	APP RIO <b>128.90 119.35 129.80 125.95 119.725</b> <b>132.975 134.40 121.25 134.95 124.95</b>	TWR GALEÃO <b>118.00 118.20</b>	GND C. GALEÃO <b>121.65 128.35</b>
-------------------------	---	------------------------------------	---------------------------------------

VOR CXI <b>112.30 MHz</b>	FINAL CRS <b>326°</b>	FAF: <b>1660'</b>	N/A	VOR MDA / (OCH): <b>470' / (460')</b>
------------------------------	--------------------------	----------------------	-----	--

APCH Perdida: 1) Subir para **6000'**, gradiente MNM 4.5%. Manter proa **326** até cruzar **1000'**. Após, curvar a ESQUERDA para interceptar RDL **287** do VOR CXI até ENSAR. Após, curvar à DIREITA, proa **060**, para interceptar RDL **295** do VOR PCX até IVTAL para espera.

Missed APCH: 1) Climb to **6000'**, MNM gradient 4.5%. Maintain heading **326** until passing **1000'**. Then, turn LEFT to intercept RDL **287** CXI VOR until ENSAR. Then, turn RIGHT, heading **060** to intercept RDL **295** PCX VOR until IVTAL for holding.

DEPARTAMENTO DE CONTROLE DO ESPAÇO AÉREO



RWY33	1.3	2.0	3.0	4.0	VUNOR		Ground Speed (KT)	090	110	130	150	170	190
ALT	470	705	1017	1336	1660		FPM	500	600	700	800	900	1000
(HGT)	460	693	1005	1324	1648		FAF-MAPT			NA			

STRAIGHT-IN	CAT	A	B	C	D	E
VOR	MDA / (OCH)	470' / (460')				
Missed APCH Climb Gradient	4.5%	NIL / 1600 / NIL		NIL / 2100 / NIL		
CIRCLING	MDA / (OCH)	NA				
	VIS (m)					

CHANGES: EAC. LAYOUT. MSA. OBST. VAR.