

STANDARD ARRIVAL CHART
INSTRUMENT (STAR)

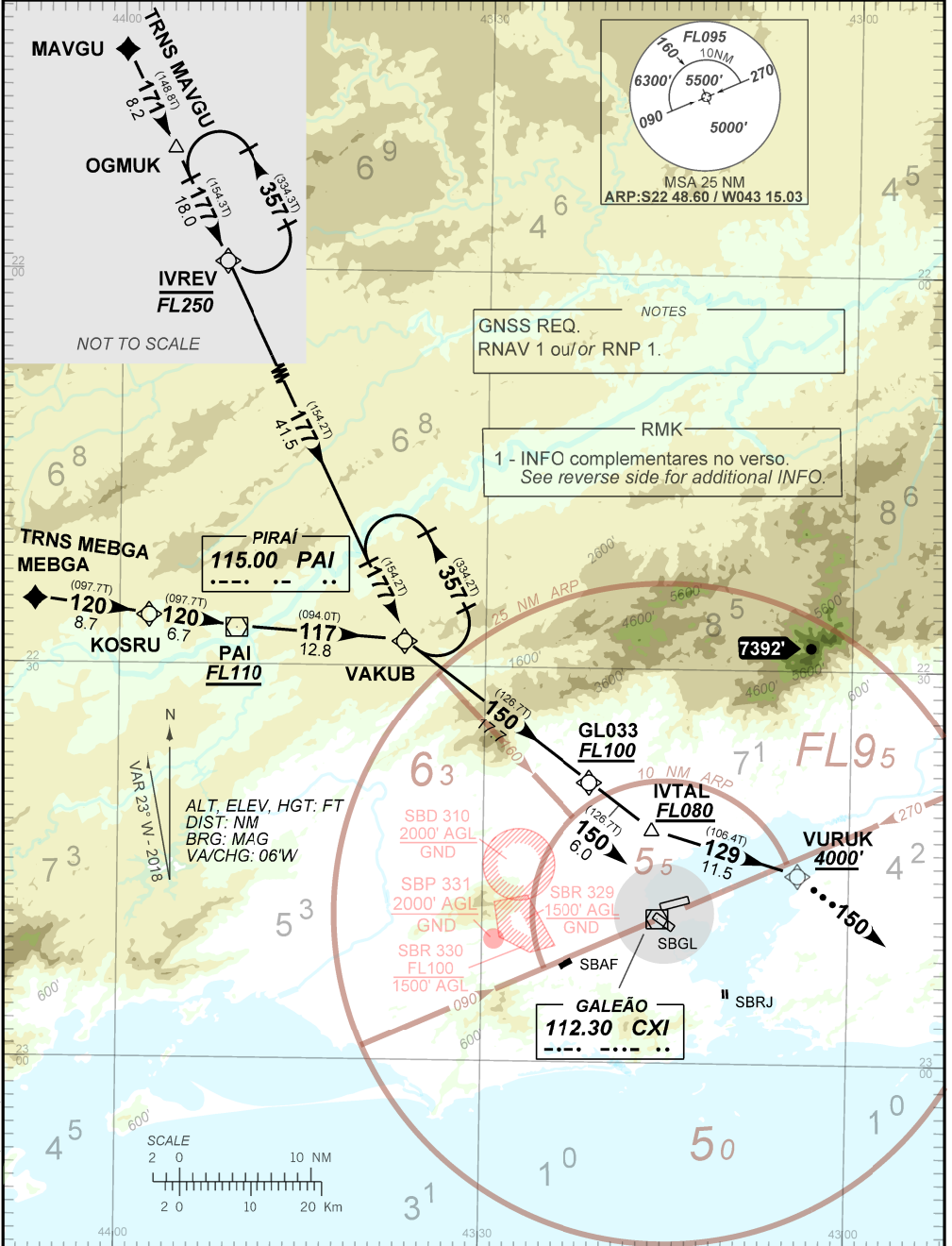
RIO DE JANEIRO / Galeão - Antônio Carlos Jobim, INTL (SBGL)

RWY 33

RNAV **IVTAL 2A**

AD ELEV: 28'

TA 7000'	D-ATIS 127.60	ACC CURITIBA 124.00 125.35 128.25 133.40 133.60	APP RIO 129.80 125.95 128.90 119.35	TWR GALEÃO 118.00 118.20
----------	------------------	---	---	-----------------------------



NOTES
GNSS REQ.
RNAV 1 ou/ or RNP 1.

RMK
1 - INFO complementares no verso.
See reverse side for additional INFO.

PIRAI
115.00 PAI
- - - - -

GL033
FL100

FL95

ALT. ELEV. HGT: FT
DIST: NM
BRG: MAG
VA/CHG: 06°W

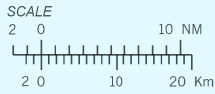
SBD 310
2000' AGL
GND

SBP 331
2000' AGL
GND

SBR 330
FL100
1500' AGL

SBR 329
1500' AGL
GND

GALEÃO
112.30 CXI
- - - - -



CHANGES: FREQ. NOTES, VOR/DME

FALHA DE COMUNICAÇÃO
COMMUNICATION FAILURE

Acionar A7600, completar chegada até VURUK e executar procedimento autorizado pelo ATC. Ou, se durante vetorização na proa 150, manter esta proa, altitude MNM 4000' até 25 NM DME CXI. Então, curvar à DIREITA para interceptar aproximação final.

Set transponder A7600, complete arrival up to VURUK and perform authorized procedure by ATC. Or, if under vectoring on heading 150, maintain heading, MNM altitude 4000' until 25 NM DME CXI. Then, turn RIGHT to intercept final approach.