

DEPARTURE CHART  
INSTRUMENT (SID)

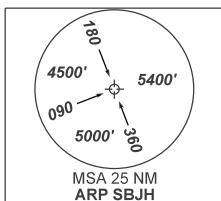
SÃO ROQUE / São Paulo Catarina Aeroporto Executivo, INTL (SBJH)

RWY 12/30

OMNI

AD ELEV: 2549'

TA 8000'	ATIS NIL	AFIS CATARINA 131.80	APP SÃO PAULO 135.75 120.05 119.80 119.25 121.40 129.00 132.10 120.25	ACC BRASÍLIA 126.15 127.25 123.35 134.00 126.80 128.50	ACC CURITIBA 126.75 127.40 125.40 124.40 132.80 126.50 126.95 128.25
----------	-------------	-------------------------	--	--	---



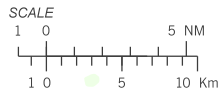
N  
VAR 21° W - 2021

ALT, ELEV, HGT: FT  
DIST: NM  
BRG: MAG  
VA/CHG: 06°W



RMK

1 - Autorizado somente / Only authorized ACFT  
Cat A, B, e C.  
2 - Gradiente MNM de subida:  
MNM climb gradient:  
RWY 12: 4.3% até/until 4500'. Após/After, 3.3%.



CHANGES: ADEL