

**INSTRUMENT APPROACH
CHART (IAC)**

CORUMBÁ / Corumbá, INTL (SBCR)

NDB RWY 27

(CAT A, B, C)

AD ELEV: 463'

ATIS NIL	APP PUERTO SUAREZ 118.50	AFIS CORUMBÁ 119.50	TWR NIL	GNDC NIL
-------------	-----------------------------	------------------------	------------	-------------

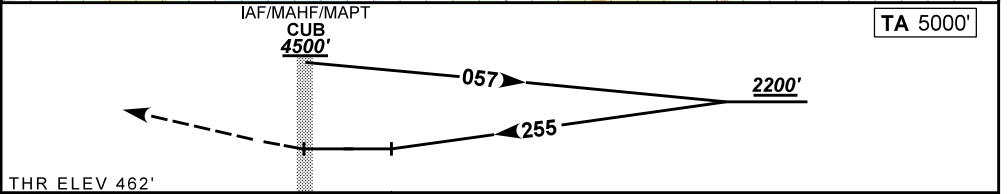
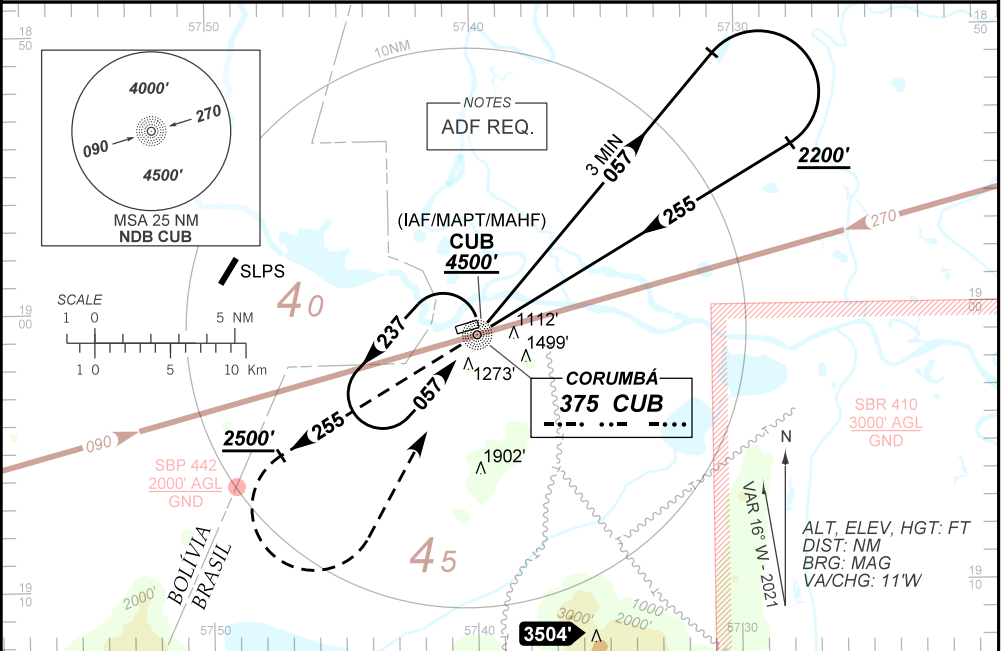
NDB CUB 375 KHz	FINAL CRS 255°	N/A	N/A	NDB MDA / (OCH): 1380' / (920')
--------------------	-------------------	-----	-----	------------------------------------

APCH Perdida: 1) Subir para **4500'**. Manter proa **255** até **2500'**. Após, curvar à ESQUERDA direto NDB CUB para espera. 2) IAS MAX 190KT.

Missed APCH: 1) Climb to **4500'**. Maintain heading **255** until **2500'**. After turn LEFT direct CUB NDB for holding. 2) MAX IAS 190KT.

RMK: Proibido circular pelo setor sul do AD.
It's prohibited to overfly South sector of the AD.

DEPARTAMENTO DE CONTROLE DO ESPAÇO AEREO



NIL	RWY27	Ground Speed (KT)	090	110	130	150	170	190
NIL	ALT	FPM	650			NA		
NIL	(HGT)	FAF-MAPT	NA					

STRAIGHT-IN		CAT	A	B	C	D	E
NDB	MDA / (OCH)	1380' / (920')				NA	
	ALS/NO ALS/ RVR ALS (m)	NIL / 2000 / NIL		NIL / 4300 / NIL			
CIRCLING	MDA / (OCH)	1560' / (1100')	1760' / (1300')	1940' / (1480')	NA		
	VIS (m)	NIL / 4300 / NIL		NIL / 4800 / NIL			

CHANGES: LAYOUT, MINM, MSA, PROC, VAR.