

**INSTRUMENT APPROACH
CHART (IAC)**

RIO BRANCO / Plácido de Castro, INTL (SBRB)

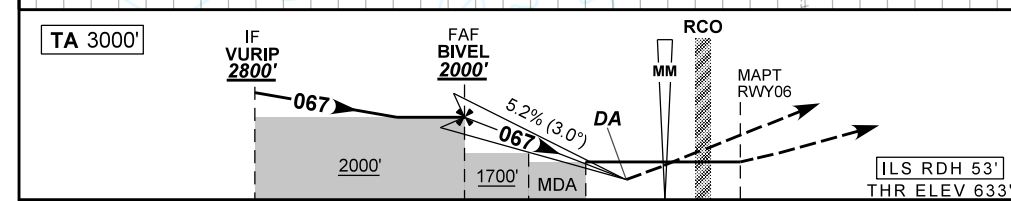
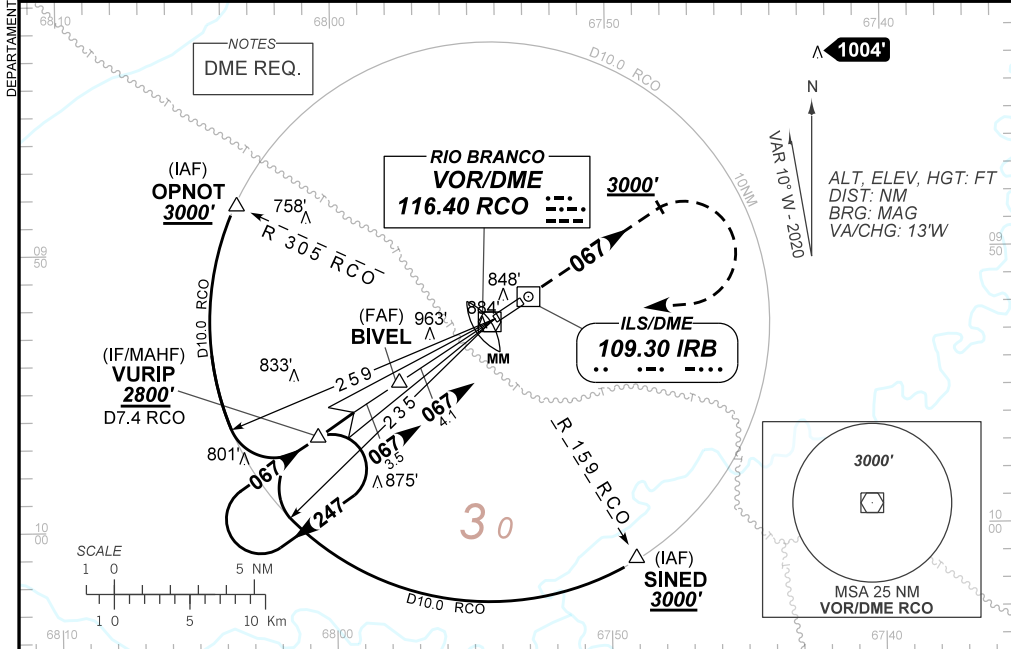
ILS Y or LOC Y RWY 06

AD ELEV: 633'

D-ATIS NIL	APP RIO BRANCO 119.90		TWR RIO BRANCO 118.70	GNDC NIL
ILS/DME IRB 109.30 MHz	FINAL CRS 067°	FAF: 2000'	CAT I DA / (OCH): REFER TO MNM	LOC MDA / (OCH): 1100' / (470')

APCH Perdida: Subir para **4000'**. Manter rumo **067°** até **3000'**. Após, curvar à DIREITA direto VOR RCO. Após, interceptar a RDL **247°** do VOR RCO até VURIP para espera.
 Missed APCH: Climb to **4000'**. Maintain course **067°** until **3000'**. After, turn RIGHT direct RCO VOR. After, intercept **247°** RDL RCO VOR until VURIP for holding.

RMK: (*)VIS RVR ALS 550m para APCH utilizando Diretor de Voo, Piloto Automático ou Head-Up Display(HUD).
 (*)VIS RVR ALS 550m for APCH using a Flight Director, Autopilot or Head-Up Display (HUD).



TO THR 06 (NM)	7.6	4.1	3.2	1.3	0.5	0.2	0.0
TO IRB (DME)	9.0	5.5	4.6	2.4	1.9	1.6	1.4

	BIVEL	3.2	2.0	1.3	RWY06
	2000	1705	1323	1100	ALT
	1367	1072	690	470	(HGT)

Ground Speed (KT)	090	110	130	150	170	190
FPM	500	600	700	800	900	1000
FAF-MAPT	NA					

STRAIGHT-IN	CAT	A	B	C	D	E
CAT I	DA / (OCH)	883' / (250')				965' / (332')
	ALS/NO ALS/ RVR ALS (m)	800 / 1300 / 700(*)				800 / 1500 / 750
LOC	MDA / (OCH)	1100' / (470')				
	ALS/NO ALS/ RVR ALS (m)	800 / 1600 / 700		1500 / 2200 / 1400		
CIRCLING	MDA / (OCH)	NA				
	VIS (m)					