

**INSTRUMENT APPROACH
CHART (IAC)**

CRUZEIRO DO SUL / Cruzeiro do Sul, INTL (SBCZ)

AD ELEV: 636'

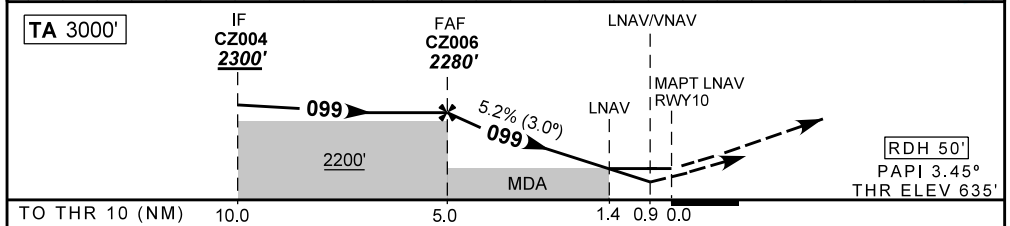
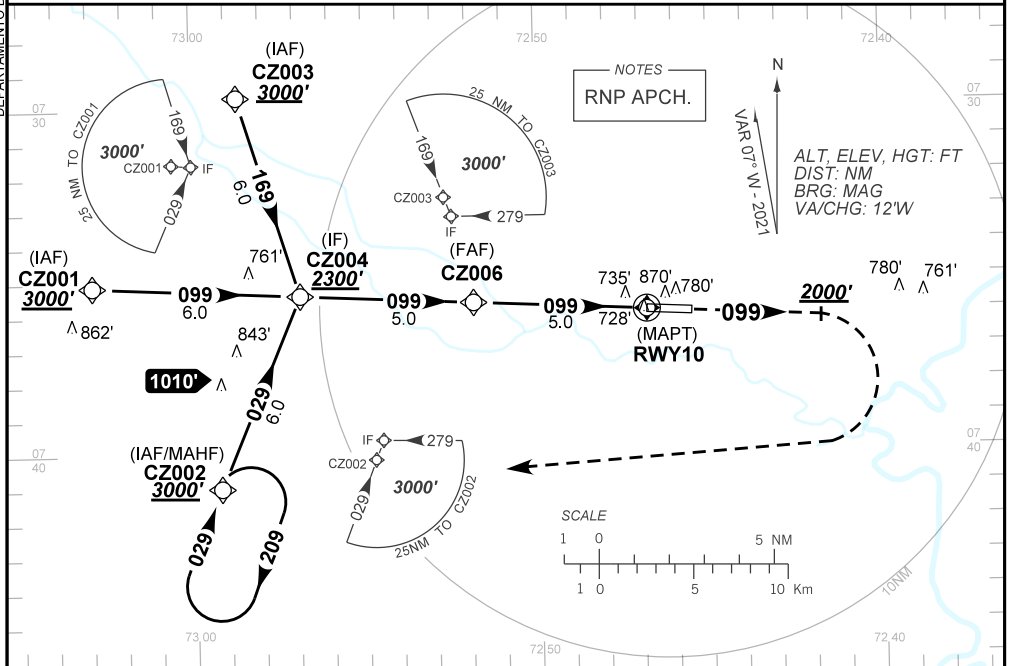
RNP Z RWY 10

DEPARTAMENTO DE CONTROLE DO ESPAÇO AÉREO

ATIS NIL	APP CRUZEIRO NIL	AFIS CRUZEIRO 125.70	GNDC NIL
TEMP LNAV/VNAV MIN 0°C / MAX 50°C	FINAL CRS 099°	FAF: 2280'	LNAV MDA / (OCH): 1120' / (490')

APCH Perdida: Subir para **3000'**. Manter proa **099** até **2000'**. Após, curvar à DIREITA direto CZ002 para espera.

Missed APCH: Climb to **3000'**. Maintain heading **099** until **2000'**. After, turn RIGHT direct CZ002 for holding.



CZ006	4.0	3.0	2.0	1.4	RWY10	Ground Speed (KT)	90	110	130	150	170	190
2280	1959	1640	1322	1120	ALT	FPM	500	600	700	800	900	NA
1645	1324	1005	687	490	(HGT)	FAF-MAPT	NA					

STRAIGHT-IN	CAT	A	B	C	D	E	
	DA / (OCH)	979' / (346')					NA
LNAV/VNAV	ALS/NO ALS/ RVR ALS (m)	NIL / 1600 / NIL					
	MDA / (OCH)	1120' / (490')					
LNAV	ALS/NO ALS/ RVR ALS (m)	NIL / 1600 / NIL			NIL / 2300 / NIL		
	MDA / (OCH)	NA					
CIRCLING	MDA / (OCH)	NA					
	VIS (m)	NA					

CHANGES: MIN OPR, THR ELEV.