

STANDARD DEPARTURE CHART
INSTRUMENT (SID)

RIBEIRÃO PRETO / Leite Lopes (SBRP)
RWY 18/36

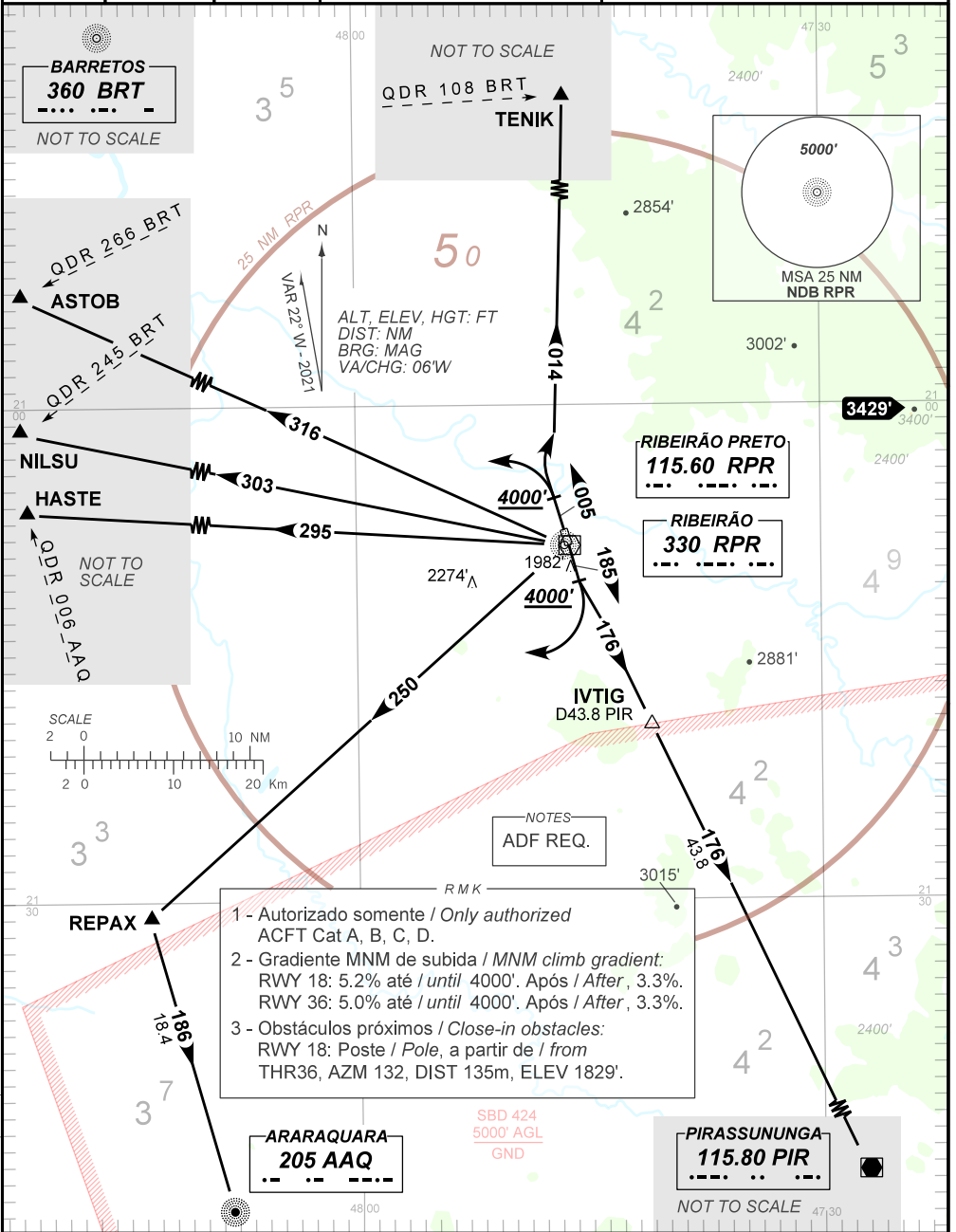
AAQ 2B - ASTOB 2B - HASTE 2B - NILSU 2B
PIR 2B - REPAX 2B - TENIK 2C

AD ELEV: 1805'

TA 7000'	TWR RIBEIRÃO 118.00	APP UBERABA 120.80	APP ACADEMIA				ACC BRASÍLIA				
			119.55	119.75	120.10	120.40	123.35	124.20	124.80	126.45	126.80
			122.40	122.80	123.60	134.60	128.05	128.50	134.00	135.15	135.55

DEPARTAMENTO DE CONTROLE DO ESPAÇO AÉREO

CHANGES: HDG. PROC. RMK.



- NOTES
- ADF REQ.
- 1 - Autorizado somente / Only authorized ACFT Cat A, B, C, D.
 - 2 - Gradiente MNM de subida / MNM climb gradient:
RWY 18: 5.2% até / until 4000'. Após / After, 3.3%.
RWY 36: 5.0% até / until 4000'. Após / After, 3.3%.
 - 3 - Obstáculos próximos / Close-in obstacles:
RWY 18: Poste / Pole, a partir de / from THR36, AZM 132, DIST 135m, ELEV 1829'.