

**INSTRUMENT APPROACH
CHART (IAC)**

SANTA MARIA / Santa Maria (SBSM)

**USO EXCLUSIVO ACFT MILITARES
MILITARY ACFT ONLY**

PAR X RWY 29

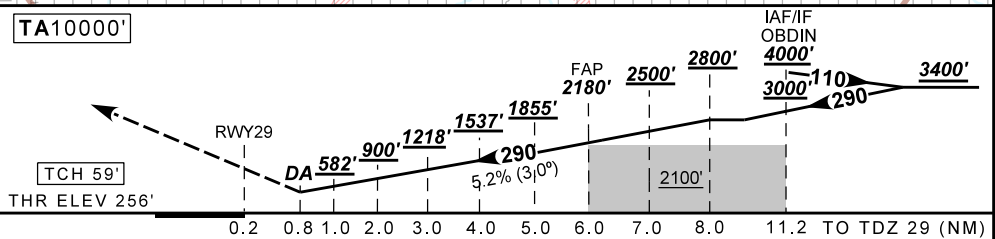
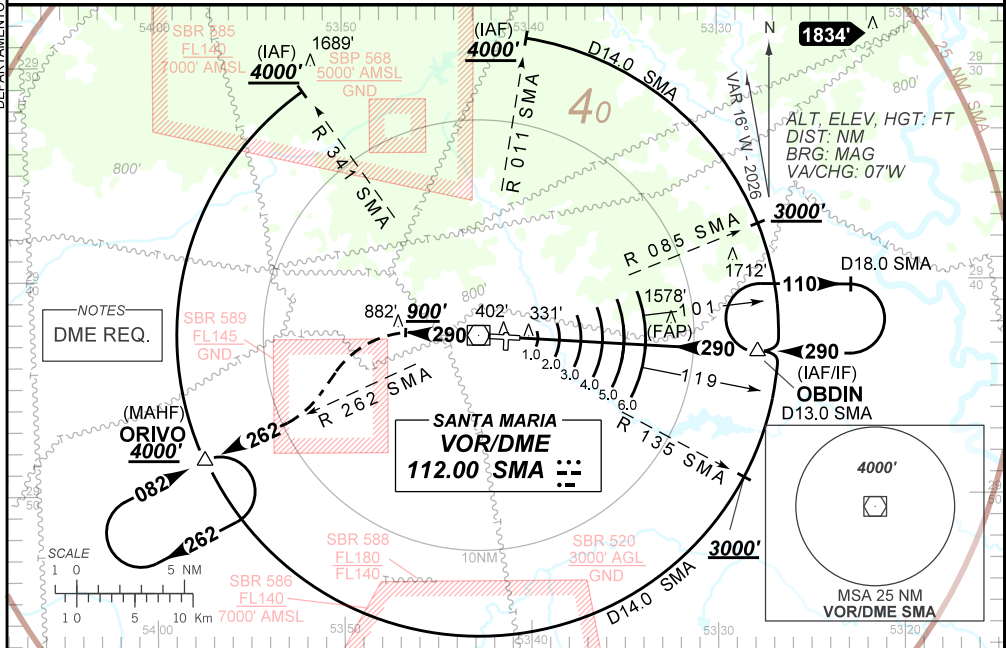
AD ELEV: 289'

ATIS 127.75	APP SANTA MARIA 118.30 119.35 121.35	PAR SANTA MARIA 129.05 129.40 129.80	TWR SANTA MARIA 118.30 118.85	GNDC NIL
VOR SMA 112.00 MHz	FINAL CRS 290°	FAP 2180'	PAR DA / (OCH): 517' / (261')	N/A

APCH Perdida: Subir para **4000'**. Manter proa **290°** até **900'**. Após, curvar à ESQUERDA para interceptar a RDL **262** do VOR SMA até ORIVO para espera.

Missed APCH: Climb to **4000'**. Maintain heading **290°** until **900'**. After, turn LEFT to intercept **262** RDL SMA VOR until ORIVO for holding.

DEPARTAMENTO DE CONTROLE DO ESPAÇO AÉREO



TDZ 29	0.8	1.0	2.0	3.0	4.0	5.0	6.0	7.0	8.0	Ground Speed (KT)	090	110	130	150	170	190
ALT	517	582	900	1218	1537	1855	2180	2500	2800	FPM	500	600	700	800	900	1000
(HGT)	261	326	644	962	1281	1599	1924	2244	2544	FAF-MAPT	NA					

STRAIGHT-IN	CAT	A	B	C	D	E
	DA / (OCH)	517' / (261')				
PAR	ALS/NO ALS/ RVR ALS (m)	NIL / 1300 / NIL				
	MDA / (OCH)	NA				
CIRCLING	VIS (m)	NA				

CHANGES: EAC. FREQ. LAYOUT. TA. VAR.