

**INSTRUMENT APPROACH
CHART (IAC)**

CURITIBA / Afonso Pena, INTL (SBCT)

VOR Y RWY 33

AD ELEV: 2989'

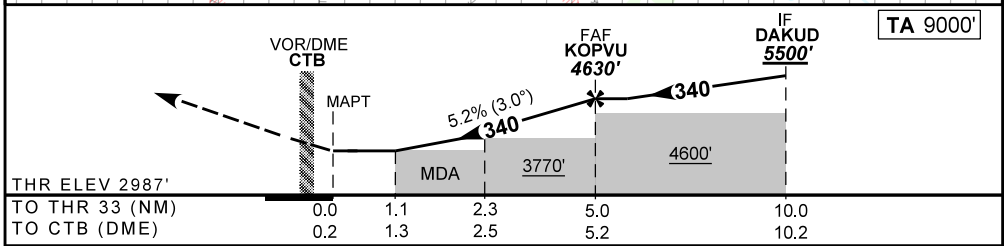
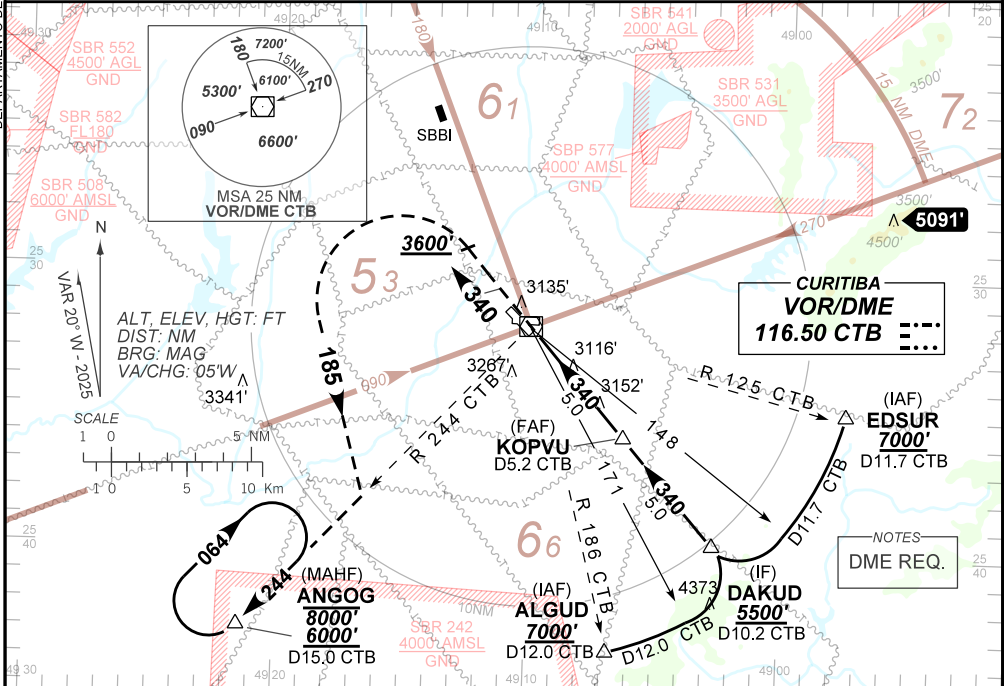
D-ATIS 127.80	APP CURITIBA 119.70 119.95 120.65 120.95 129.55 133.15			TWR CURITIBA 118.15	GNDC CURITIBA 121.90
-------------------------	--	--	--	-------------------------------	--------------------------------

VOR/DME CTB 116.50 MHz	FINAL CRS 340°	FAF: 4630'	N/A	VOR MDA / (OCH): 3390' / (410')
----------------------------------	--------------------------	----------------------	-----	---

APCH Perdida: Subir para **6000'**. Manter proa **340** até **3600'**. Após, curvar à ESQUERDA proa **185** para interceptar RDL **244** VOR CTB até ANGOG para espera.

Missed APCH: Climb to **6000'**. Maintain heading **340** until **3600'**. After, turn LEFT heading **185** to intercept RDL **244** VOR until ANGOG for holding.

DEPARTAMENTO DE CONTROLE DO ESPAÇO AÉREO



RWY33	1.1	2.3	3.0	4.0	KOPVU		Ground Speed (KT)	090	110	130	150	170	190
ALT	3390	3770	3992	4311	4630		FPM	500	600	700	800	900	NA
(HGT)	410	783	1005	1324	1643		FAF-MAPT	NA					

STRAIGHT-IN	CAT	A	B	C	D	E
	VOR	MDA / (OCH)	3390' / (410')			NIL / 1600 / NIL
		ALS/NO ALS/ RVR ALS (m)		NIL / 1600 / NIL		
CIRCLING	MDA / (OCH)	NA				
	VIS (m)	NA				

CHANGES: EAC