

**INSTRUMENT APPROACH
CHART (IAC)**

PAULO AFONSO / Paulo Afonso (SBUF)

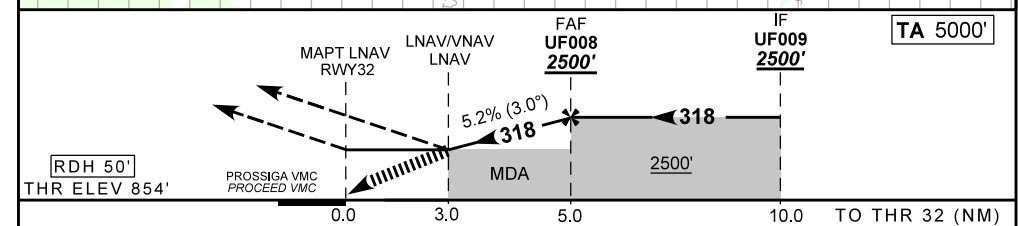
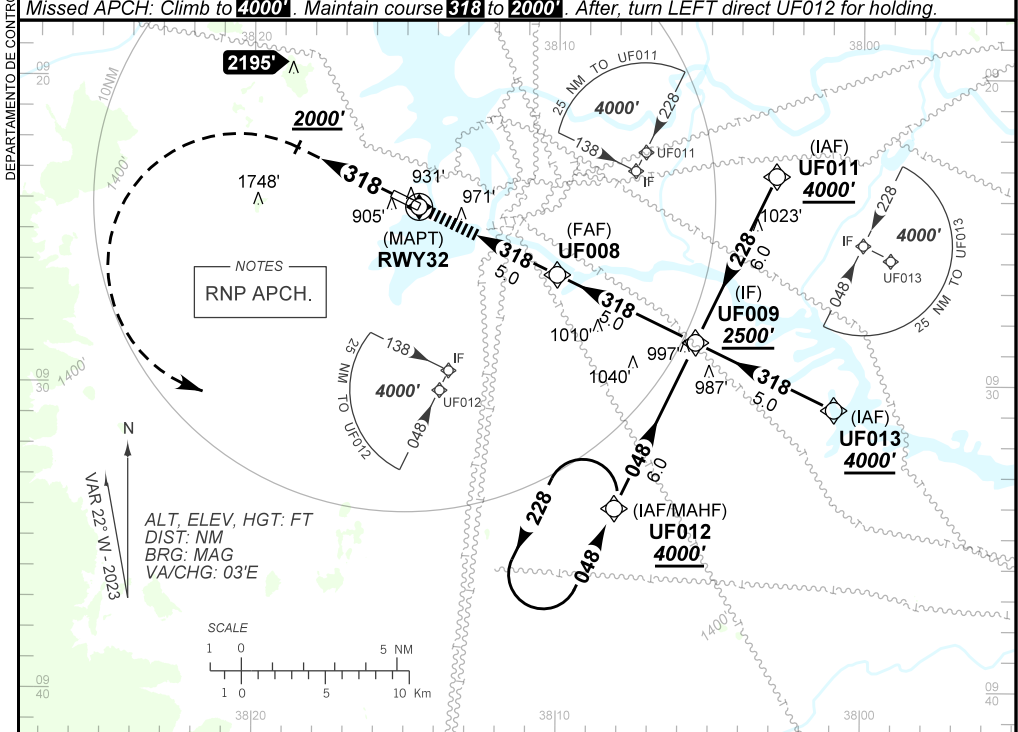
AD ELEV: 884'

RNP RWY 32

ATIS NIL	AFIS PAULO AFONSO 125.85	TWR NIL	GNDC NIL
-------------	-----------------------------	------------	-------------

TEMP LNAV/VNAV MIN -10°C / MAX 50°C	FINAL CRS 318°	FAF: 2500'	LNAV/VNAV DA / (OCH): 1854' / (1000')	LNAV MDA / (OCH): 1860' / (1000')
---	--------------------------	----------------------	---	---

APCH Perdida: Subir para **4000'**. Manter rumo **318** até **2000'**. Após, curvar à ESQUERDA direto UF012 para espera.
Missed APCH: Climb to **4000'**. Maintain course **318** to **2000'**. After, turn LEFT direct UF012 for holding.



RWY32	3.0	4.0	UF008						
ALT	1860	2178	2500						
(HGT)	1000	1324	1646						
FAF-MAPT	NIL								

STRAIGHT-IN	CAT	A	B	C	D	E	
	DA / (OCH)	1854' / (1000')					NA
LNAV/VNAV	ALS/NO ALS/ RVR ALS (m)	NIL / 5000 / NIL					
	MDA / (OCH)	1860' / (1000')					
LNAV	ALS/NO ALS/ RVR ALS (m)	NIL / 5000 / NIL					
	MDA / (OCH)	NA					
CIRCLING	VIS (m)	NA					