

**INSTRUMENT APPROACH
CHART (IAC)**

SÃO PAULO / Congonhas - Deputado Freitas Nobre (SBSP)

ILS Y or LOC Y RWY 17R

AD ELEV: 2634'

D-ATIS 127.65	APP SÃO PAULO 133.85 119.05 119.80 129.00 119.60 122.75			TWR SÃO PAULO 118.05 127.15	GNDC SÃO PAULO 121.90
-------------------------	---	--	--	---------------------------------------	---------------------------------

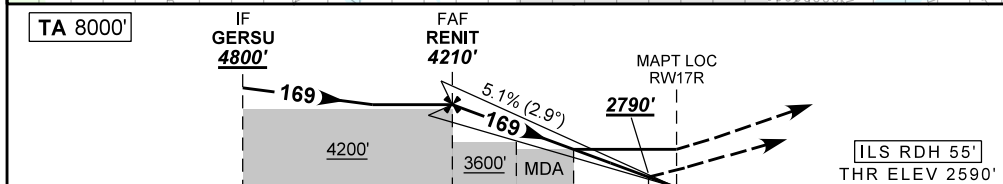
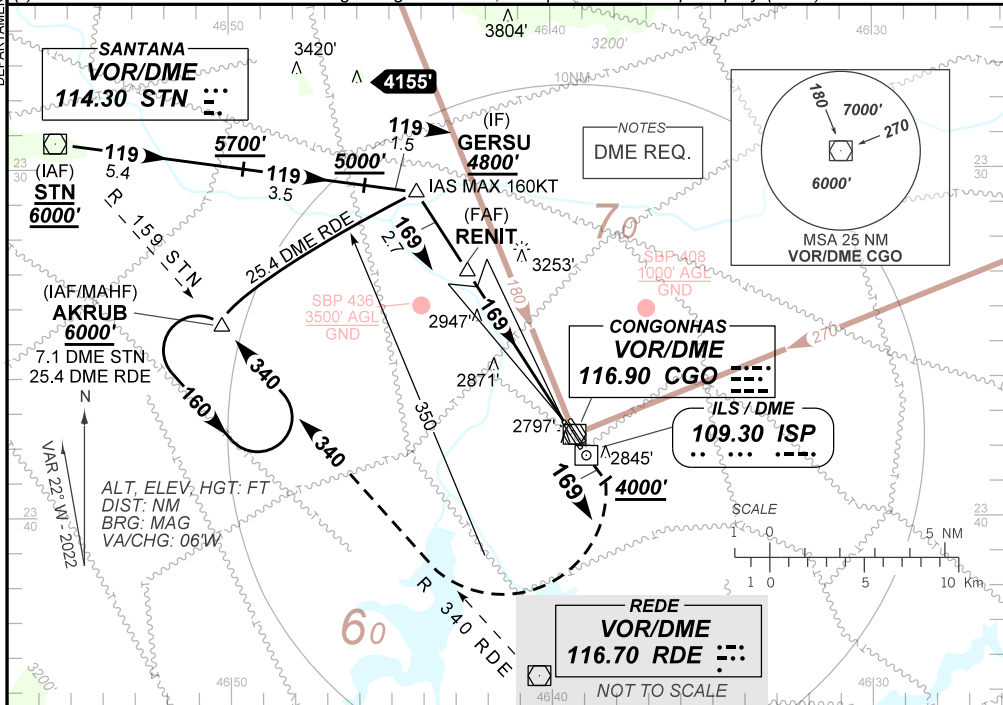
ILS/DME ISP 109.30 MHz	FINAL CRS 169°	FAF: 4210'	CAT I DA / (OCH): 2790' / (200')	LOC MDA / (OCH): 3170' / (580')
----------------------------------	--------------------------	----------------------	--	---

APCH Perdida: 1) Subir para **6000'**, na RDL **169** CGO, gradiente MNM 5%. Após **4000'**, curvar à DIREITA RDL **340** RDE ou RDL **159** STN até AKRUB para espera. 2) IAS MAX 180KT.

Missed APCH: 1) Climb to **6000'**, on **169** CGO RDL, MNM gradient 5%. After **4000'**, turn RIGHT **340** RDE RDL or **159** STN RDL until AKRUB for holding. 2) IAS MAX 180KT.

RMK: (*)VIS RVR ALS 550m para APCH utilizando Diretor de Voo, Piloto Automático ou Head-Up Display (HUD).
(*)VIS RVR ALS 550m for APCH using a Flight Director, Autopilot or Head-Up Display (HUD).

DEPARTAMENTO DE CONTROLE DO ESPAÇO AEREO



TO THR 17R (NM)	7.7	5.0	3.2	1.7	0.5	0.0
TO ISP (DME)	8.9	6.2	4.4	2.9	1.7	1.2

	RENIT	4.0	3.2	2.0	1.7	RWY 17R	Ground Speed (KT)	090	110	130	150	170	190
	4210	3876	3630	3261	3170	ALT	FPM	500	600	700	800	900	NA
	1620	1286	1040	671	580	(HGT)	FAF-MAPT	NA					

STRAIGHT-IN	CAT	A	B	C	D	E
	CAT I	DA / (OCH)	2790' / (200')			
	ALS/NO ALS / RVR ALS (m)	800 / 1200 / 700 (*)				
LOC	MDA / (OCH)	3170' / (580')				
	ALS/NO ALS / RVR ALS (m)	800 / 1600 / NIL		1900 / 2600 / NIL		

CHANGES: AD ELEV. DA WPT.