

**INSTRUMENT APPROACH
CHART (IAC)**

SANTARÉM / Maestro Wilson Fonseca, INTL (SBSN)

AD ELEV: 197'

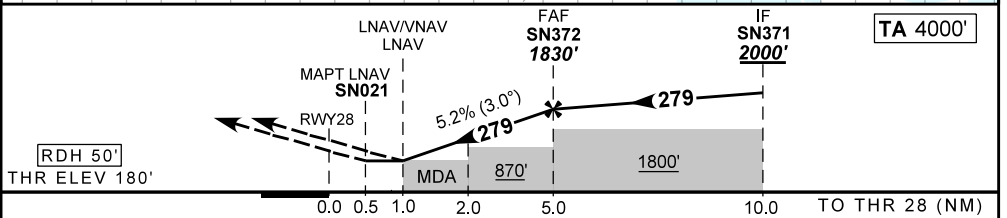
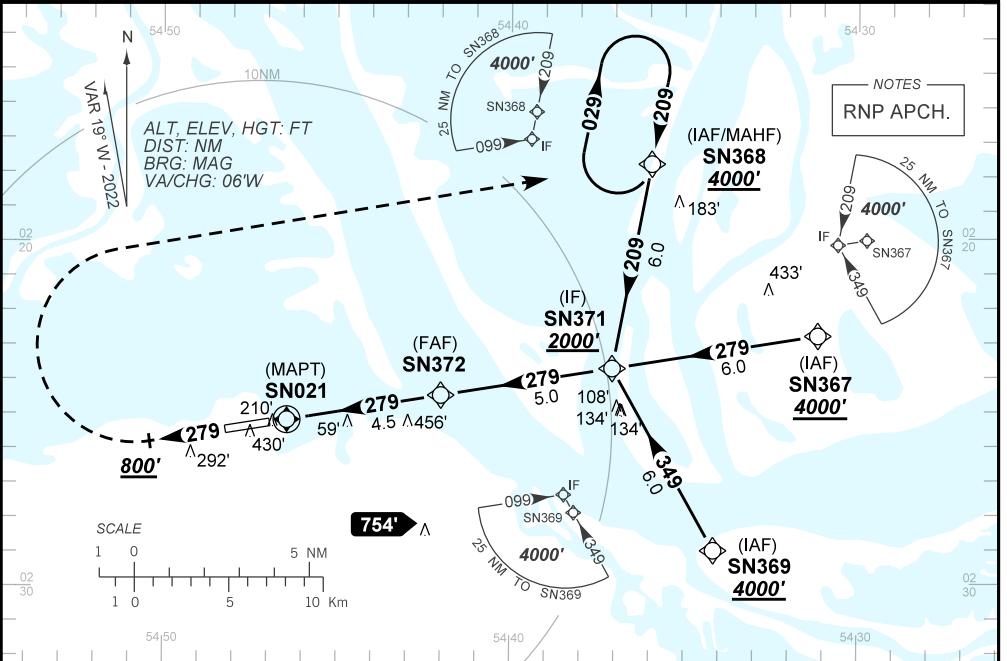
RNP RWY 28

ATIS NIL	APP SANTARÉM 119.30	TWR SANTARÉM 118.10	AFIS SANTARÉM 119.30	GNDC NIL
TEMP LNAV/VNAV MIN 10°C / MAX 50°C	FINAL CRS 279°	FAF: 1830'	LNAV/VNAV DA / (OCH): 524' / (344')	LNAV MDA / (OCH): 550' / (370')

APCH Perdida: Subir para **4000'**. Manter proa **279** até **800'**. Após, curvar à DIREITA direto SN368 para espera.

Missed APCH: Climb to **4000'**. Maintain heading **279** until **800'**. After, turn RIGHT direct to SN368 for holding.

DEPARTAMENTO DE CONTROLE DO ESPAÇO AÉREO



RWY28	1.0	2.0	3.0	4.0	SN372	Ground Speed (KT)	090	110	130	150	170	190
ALT	550	867	1185	1504	1830	FPM	500	600	700	800	900	NA
(HGT)	370	687	1005	1324	1650	FAF-MAPT	NA					

STRAIGHT-IN	CAT	A	B	C	D	E	
	DA / (OCH)	524' / (344')					NA
LNAV/VNAV	ALS/NO ALS/ RVR ALS (m)	NIL / 1600 / NIL					
	MDA / (OCH)	550' / (370')					
LNAV	ALS/NO ALS/ RVR ALS (m)	NIL / 1700 / NIL					
	MDA / (OCH)	NA					
CIRCLING	MDA / (OCH)	NA					
	VIS (m)	NA					

CHANGES: MINM. PROC.