

STANDARD DEPARTURE CHART
INSTRUMENT (SID)

RECIFE / Guararapes - Gilberto Freyre, INTL (SBRF)

RWY 18

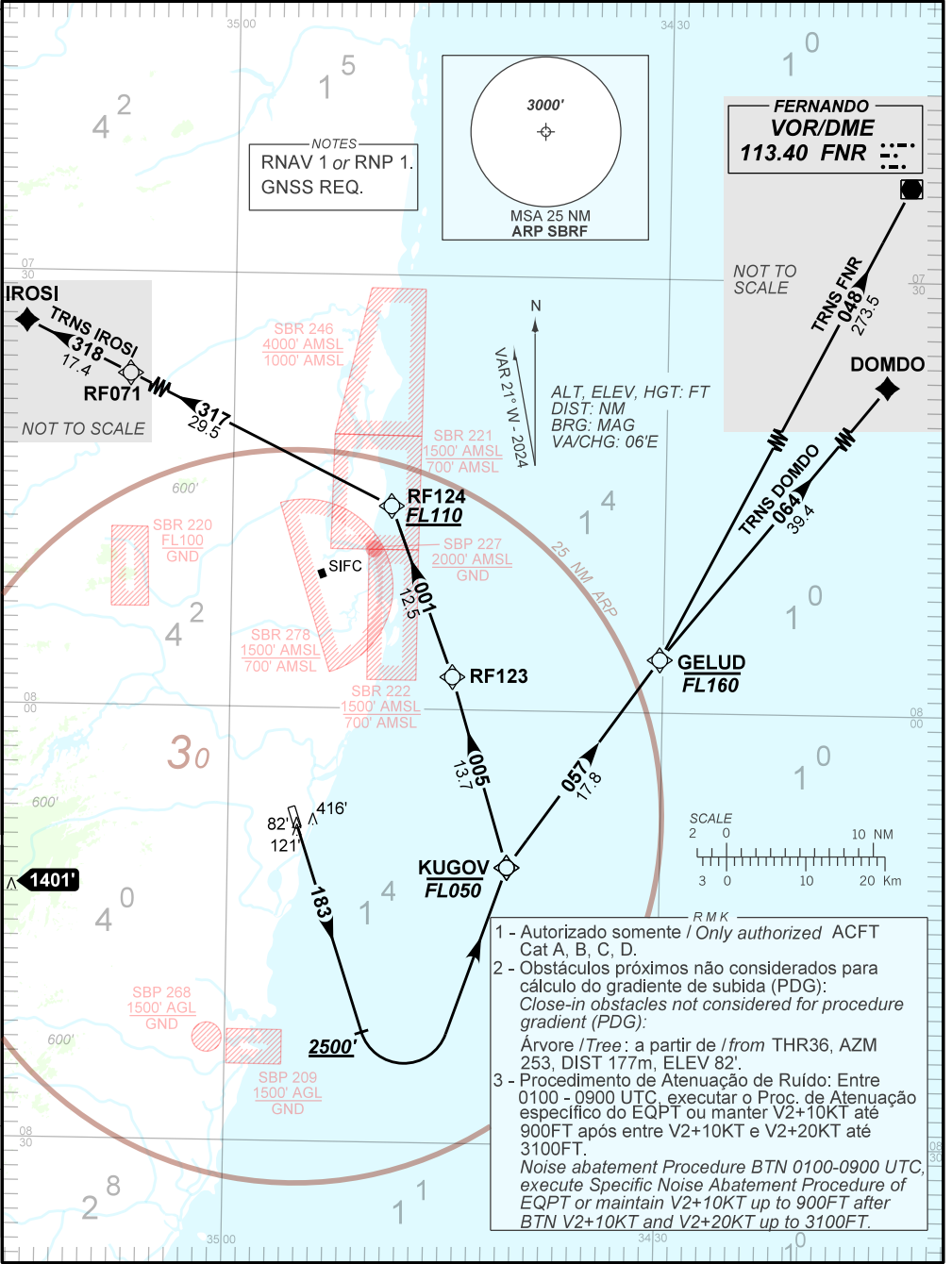
AD ELEV: 33'

RNAV KUGOV 2A

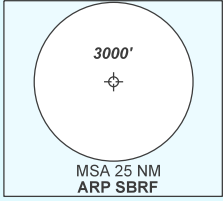
TA 4000'	D-ATIS 127.65	TWR RECIFE 125.25 118.35	APP RECIFE 119.50 119.95 120.40 128.95 129.60	ACC RECIFE 128.70 134.80 128.05 135.80
----------	------------------	-----------------------------	--	---

DEPARTAMENTO DE CONTROLE DO ESPAÇO AÉREO

CHANGES: EAC IDENT. PROC.



NOTES
RNAV 1 or RNP 1.
GNSS REQ.



FERNANDO
VOR/DME
113.40 FNR ⋯⋯

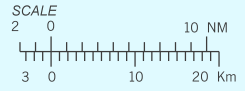
NOT TO SCALE

TRNS FNR 048
273.5

DOMDO

TRNS DOMDO 064
39.4

ALT, ELEV, HGT: FT
DIST: NM
BRG: MAG
VA/CHG: 06'E



- R M K
- 1 - Autorizado somente / Only authorized ACFT Cat A, B, C, D.
 - 2 - Obstáculos próximos não considerados para cálculo do gradiente de subida (PDG):
Close-in obstacles not considered for procedure gradient (PDG):
Árvore / Tree: a partir de / from THR36, AZM 253, DIST 177m, ELEV 82'.
 - 3 - Procedimento de Atenuação de Ruído: Entre 0100 - 0900 UTC, executar o Proc. de Atenuação específico do EQPT ou manter V2+10KT até 900FT após entre V2+10KT e V2+20KT até 3100FT.
Noise abatement Procedure BTN 0100-0900 UTC, execute Specific Noise Abatement Procedure of EQPT or maintain V2+10KT up to 900FT after BTN V2+10KT and V2+20KT up to 3100FT.