

**INSTRUMENT APPROACH
CHART (IAC)**

CORREIA PINTO / Aeroporto Regional do Planalto Serrano (SNCP)

AD ELEV: 2887'

RNP RWY 09

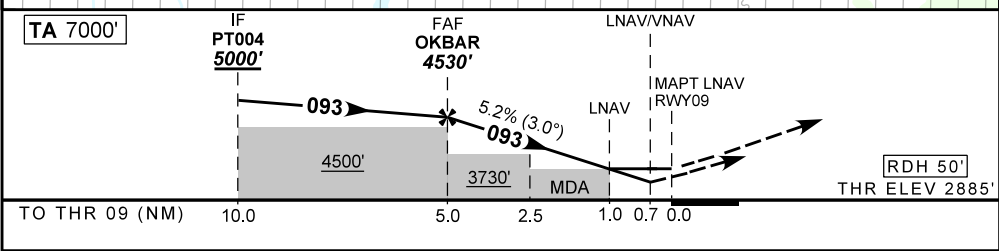
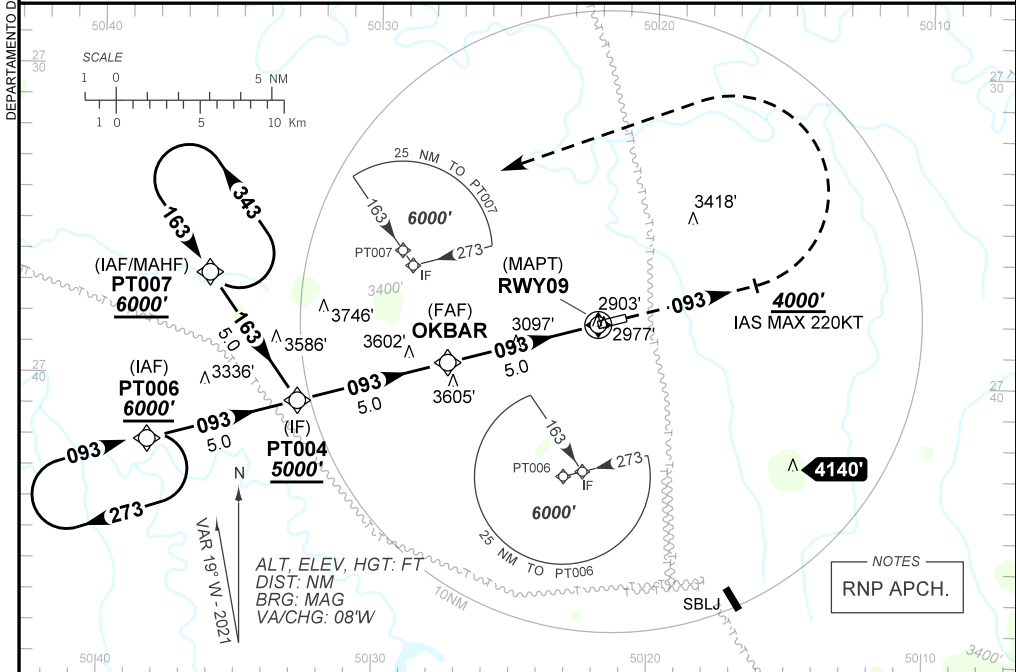
ATIS NIL	APP NIL	AFIS 131.10	GNDC NIL
-------------	------------	----------------	-------------

TEMP LNAV/VNAV MIN -10°C / MAX 45°C	FINAL CRS 093°	FAF: 4530'	LNAV/VNAV DA / (OCH): 3154' / (269')	LNAV MDA / (OCH): 3260' / (380')
---	--------------------------	----------------------	--	--

APCH Perdida: Subir para **6000'**. Manter proa **093** até **4000'**. Após, curvar à ESQUERDA direto PT007 para espera.

Missed APCH: Climb to **6000'**. Maintain heading **093** until **4000'**. After, turn LEFT direct to PT007 for holding.

RMK: NIL.



	OKBAR	4.0	3.0	2.5	1.0	RWY09	Ground Speed (KT)	090	110	130	150	170	190
	4530	4209	3890	3730	3260	ALT	FPM	500	600	700	800	900	NIL
	1645	1324	1005	845	380	(HGT)	FAF-MAPT	NIL					

STRAIGHT-IN	CAT	A	B	C	D	E
LNAV/VNAV	DA / (OCH)	3154' / (269')				NA
	ALS/NO ALS/ RVR ALS (m)	NIL / 1300 / NIL				
LNAV	MDA / (OCH)	3260' / (380')				
	ALS/NO ALS/ RVR ALS (m)	NIL / 1600 / NIL		NIL / 1700 / NIL		
CIRCLING	MDA / (OCH)	NA				
	VIS (m)					

CHANGES: NEW CHART.