

STANDARD DEPARTURE CHART  
INSTRUMENT (SID)

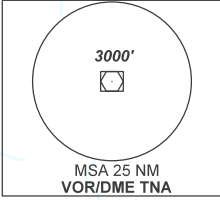
TERESINA / Senador Petrônio Portella (SBTE)

RWY 20  
ETIRA 1C

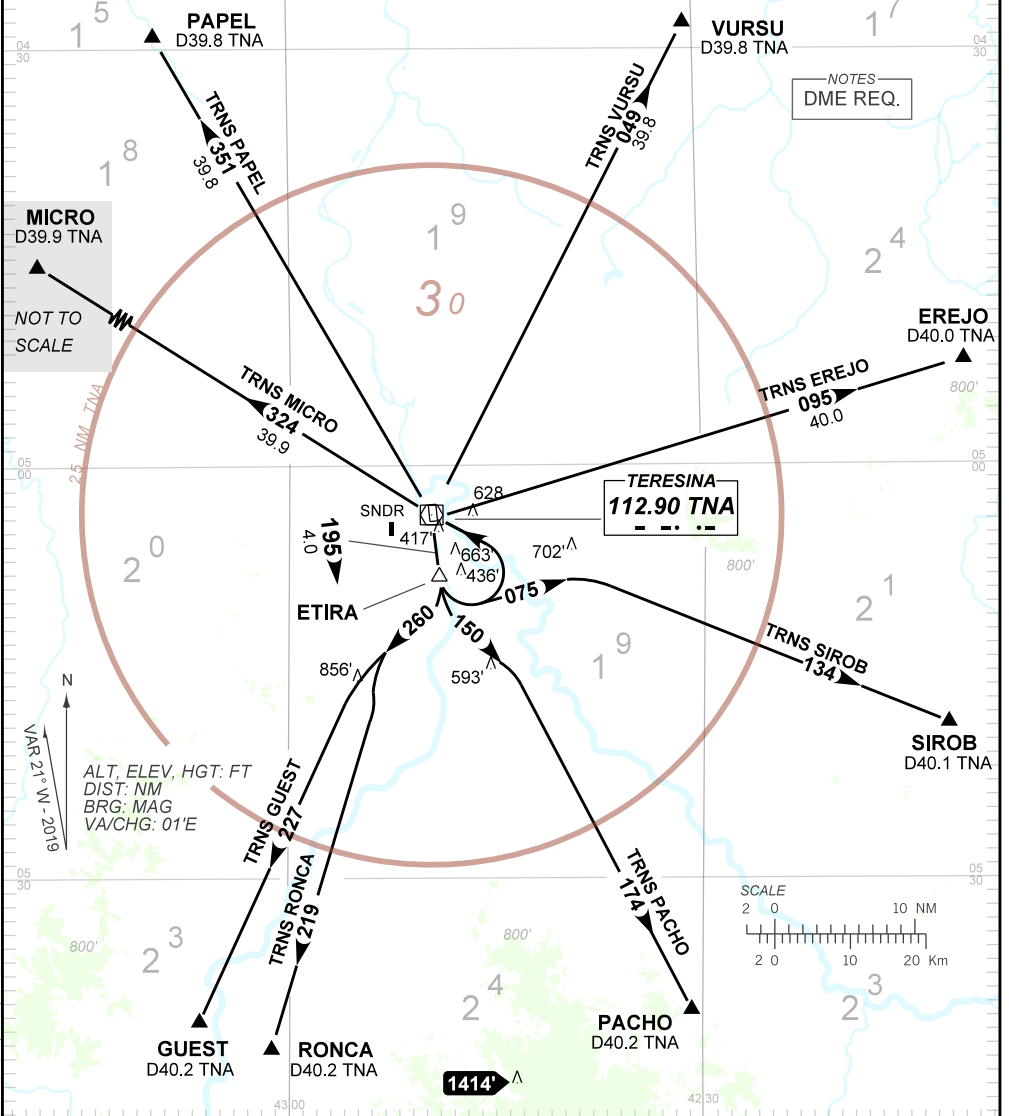
AD ELEV: 220'

TA 4000'	ATIS 127.80	TWR TERESINA 118.80	APP TERESINA 119.60	ACC AMAZÔNICO 126.15 128.30 133.70	ACC RECIFE 125.15 135.25
----------	----------------	------------------------	------------------------	---------------------------------------	-----------------------------

DEPARTAMENTO DE CONTROLE DO ESPAÇO AÉREO



- 1 - Autorizado somente / only authorized ACFT Cat A, B, C, D.  
 2 - Gradiente MNM de subida / MNM climb gradient:  
 RWY 20: 4.7% até ETIRA / until ETIRA. Após / After, 3.3%.  
 3 - IAS MAX 230KT até VOR TNA / up to TNA VOR.  
 4 - INFO complementares no verso / See reverse side for additional INFO.



CHANGES: F. HDG. LAYOUT.

— R M K —

- 5 - Obstáculos próximos não considerados para cálculo do gradiente do procedimento (PDG):  
*Close-in obstacles not considered for procedure gradient (PDG):*  
Poste / Pole : a partir de / from THR02, AZM216, DIST 115M, ELEV 239'.  
Muro / Wall : a partir de / from THR02, AZM194, DIST 135M, ELEV 226'.  
Prédio / Building : a partir de / from THR02, AZM142, DIST 213M, ELEV 255'.  
Torre / Tower : a partir de / from THR02, AZM177, DIST 1503, ELEV 416'.