

**INSTRUMENT APPROACH  
CHART (IAC)**

**AD ELEV: 2648'**

**USO EXCLUSIVO ACFT MILITARES  
MILITARY ACFT ONLY**

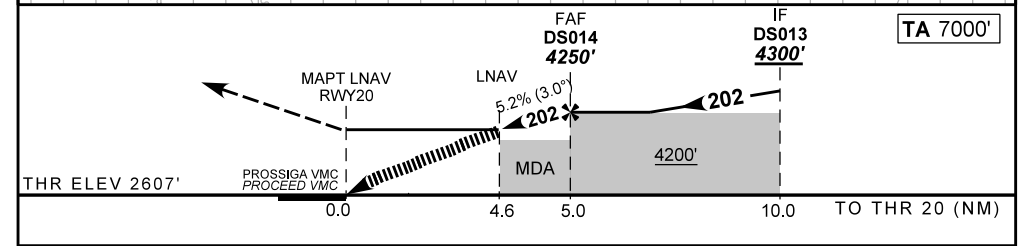
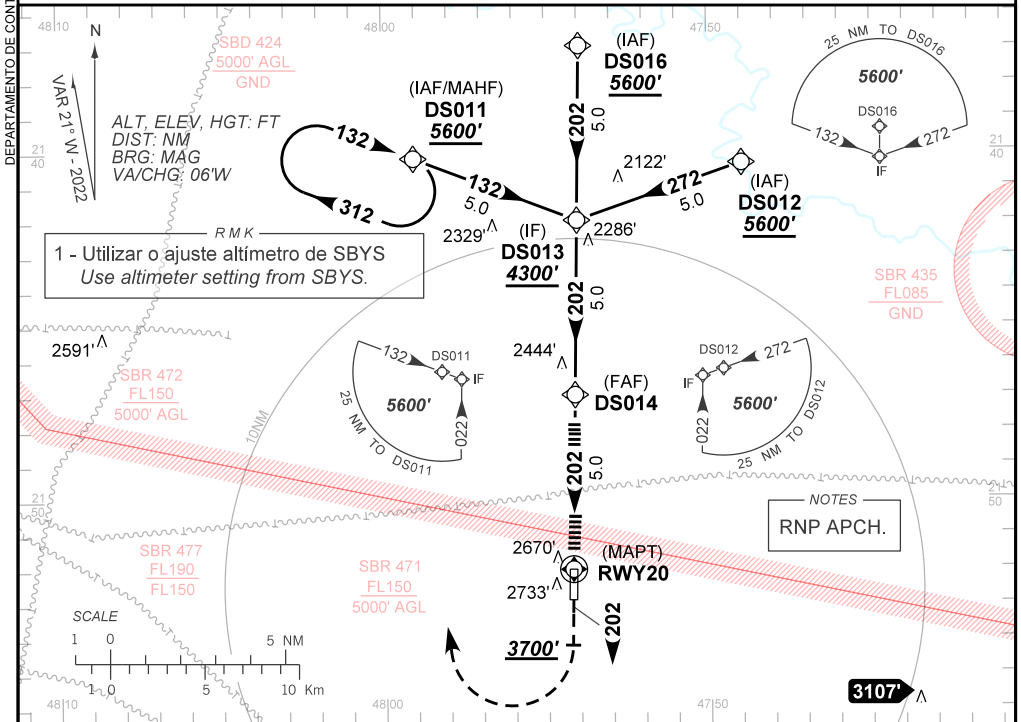
**SÃO CARLOS / Mário Pereira Lopes, INTL (SDSC)**

**RNP Y RWY 20**

ATIS ACADEMIA 127.70	APP ACADEMIA 120.10 122.40 122.80	AFIS NIL	GNDC NIL
-------------------------	--------------------------------------	-------------	-------------

N/A	FINAL CRS 202°	FAF: 4250'	N/A	LNNAV RASS (SBYS) MDA / (OCH): <b>4110' / (1510')</b>
-----	-------------------	---------------	-----	--

APCH Perdida: Subir para **5600'**. Manter proa **202** até **3700'**. Após, curvar à DIREITA direto DS011 para espera.  
Missed APCH: Climb to **5600'**. Maintain heading **202** until **3700'**. After, turn RIGHT direct DS011 for holding.



RWY20	4.6	DS014								Ground Speed (KT)	090	110	130	150	170	190
ALT	4110	4250								FPM	500	600	700	800	900	NA
(HGT)	1510	1643								FAF-MAPT	NIL					

STRAIGHT-IN	CAT	A	B	C	D	E
LNNAV RASS (SBYS)	MDA / (OCH)	4110' / (1510')				NA
	ALS/NO ALS/ RVR ALS (m)	NIL / 5000 / NIL				
CIRCLING	MDA / (OCH)	NA				
	VIS (m)					

AIRAC AMDT 2403A1 21 MAR 24

**USO EXCLUSIVO ACFT MILITARES / MILITARY ACFT ONLY**

**SDSC\_IAC\_00A 1/1  
IAC RNP Y RWY 20**

CHANGES: EAC

DEPARTAMENTO DE CONTROLE DO ESPAÇO AÉREO