

STANDARD ARRIVAL CHART
INSTRUMENT (STAR)

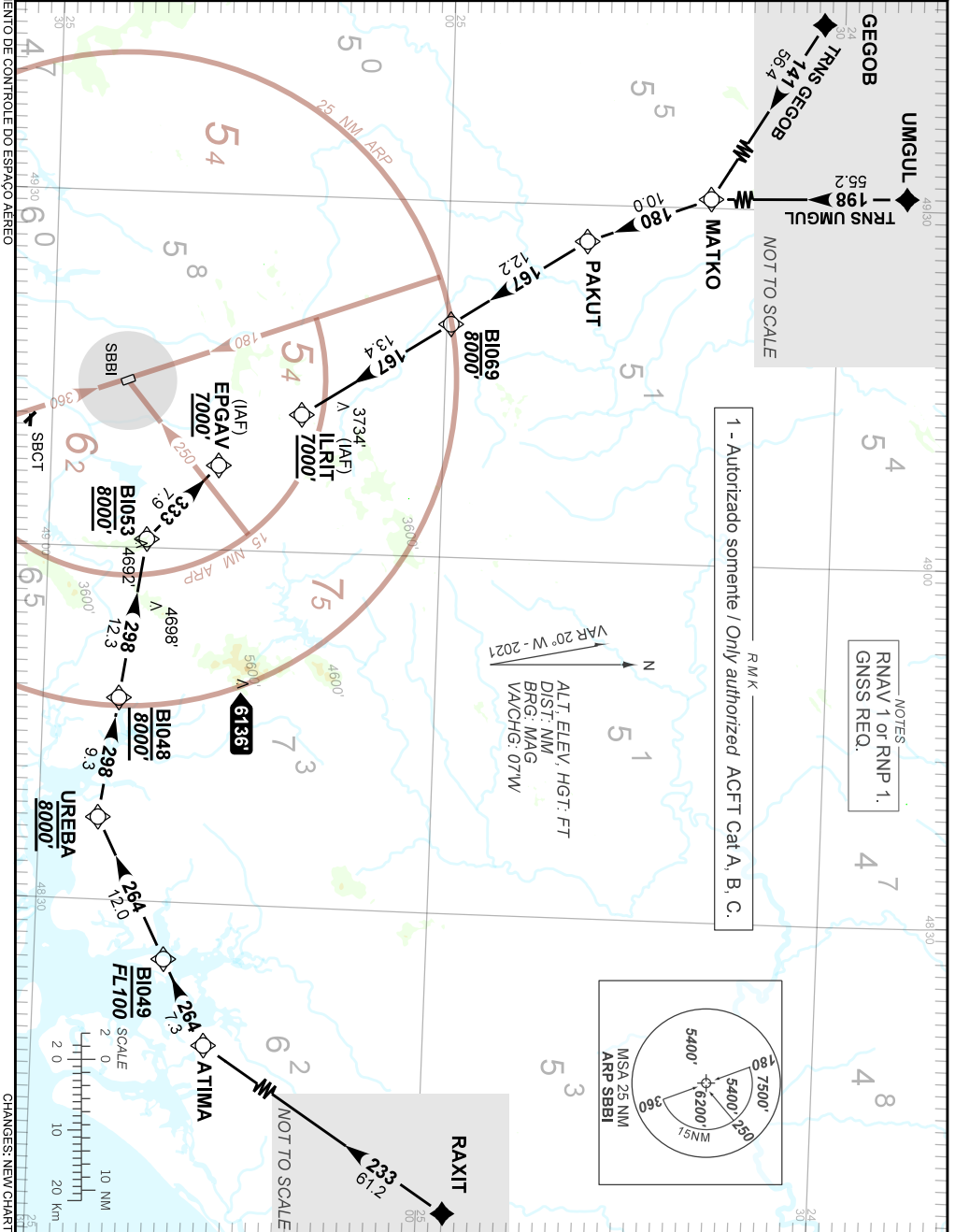
CURITIBA / Bacacheri (SBBI)
RWY 18

RNAV MATKO 2C - RAXIT 1C

AD ELEV: 3059'

| | | | | |
|----------|--------------|---|--|-------------------------|
| TA 9000' | ATIS 132.325 | ACC CURITIBA 123.70 126.10 126.50 125.80 127.20 132.80 135.85 | APP CURITIBA 119.70 119.95 120.65 120.95 129.55 133.15 | TWR BACACHERI 118.90 |
|----------|--------------|---|--|-------------------------|

DEPARTAMENTO DE CONTROLE DO ESPAÇO AEREO



1 - Autorizado somente / Only authorized ACFT Cat A, B, C.

NOTES
RNAV 1 or RNP 1,
GNSS REQ.

CHANGES: NEW CHART.