

**INSTRUMENT APPROACH  
CHART (IAC)**

**BRASÍLIA / Pres. Juscelino Kubitschek, INTL (SBBR)**

**AD ELEV: 3498'**

**RNP Z RWY 29R (AR)**

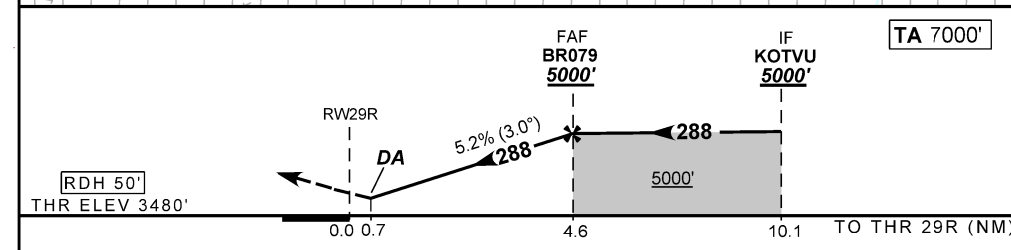
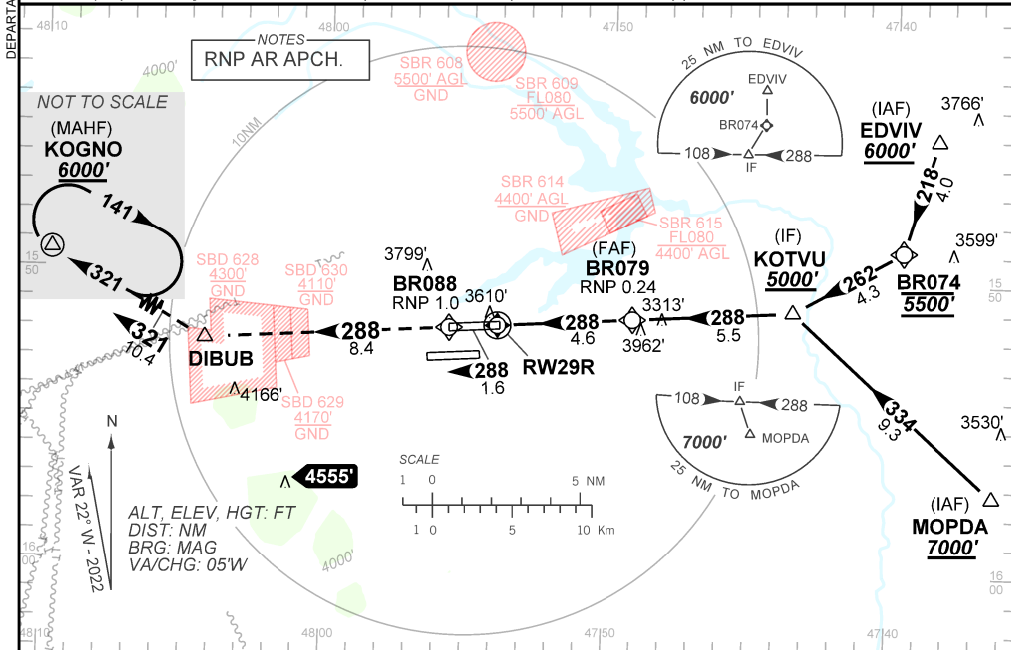
D-ATIS <b>127.80</b>	APP BRASÍLIA <b>119.70 129.60 119.20 120.00</b>	TWR BRASÍLIA <b>118.10 118.45 118.75</b>	GNDC BRASÍLIA <b>121.80 121.95</b>
-------------------------	--	---	---------------------------------------

TEMP LNAV/VNAV <b>MIN 0°C / MAX 50°C</b>	FINAL CRS <b>288°</b>	FAF: <b>5000'</b>	RNP 0.24 DA / (OCH): <b>REFER TO MNM</b>	N/A
---	--------------------------	----------------------	---	-----

APCH Perdida: 1) Subir para **6000'**. Manter rumo **288** até DIBUB. Após, curvar à DIREITA até KOGNO para espera. 2) RNP menor que 1.0 de RW29R até BR088.

Missed APCH: 1) Climb to **6000'**. Maintain course **288** until DIBUB. After, turn RIGHT until KOGNO for holding. 2) RNP below 1.0 from RW29R until BR088.

RMK: 1) Não efetuar transição RNP da aproximação perdida antes de 0.8 NM da RWY 29R.  
Do not perform RNP transition of Missed Approach before 0.8 NM from RWY 29R.  
2) Aproximações Paralelas Independentes / Independent Parallel Approaches.



RW29R	0.7	2.0	3.0	4.0	BR079		Ground Speed (KT)	090	110	130	150	170	190
ALT	3753	4167	4485	4804	5000		FPM	500	600	700	800	900	NA
(HGT)	273	687	1005	1324	1520		FAF-MAPT	NA					

STRAIGHT-IN	CAT	A	B	C	D	E
	DA / (OCH)	3753' / (273')		3772' / (292')		
RNP 0.24	ALS/NO ALS/ RVR ALS (m)	1200 / 1300 / 1100		1200 / 1400 / 1100		

**AUTORIZAÇÃO ESPECIAL PARA AERONAVE E TRIPULAÇÃO REQUERIDA  
SPECIAL AUTHORIZATION FOR AIRCRAFT AND CREW REQUIRED**