

**INSTRUMENT APPROACH
CHART (IAC)**

CORUMBÁ / Corumbá, INTL (SBCR)

**RNP RWY 27
(CAT A,B,C)**

AD ELEV: 463'

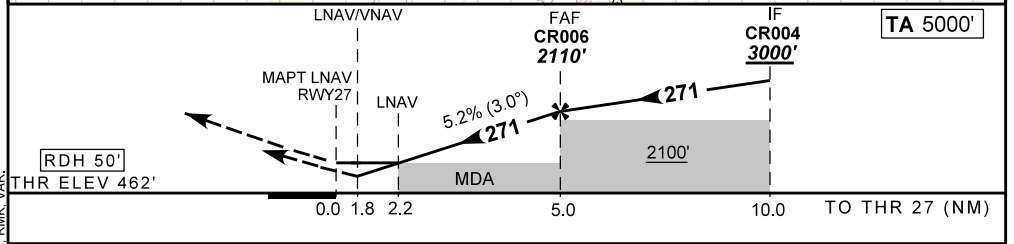
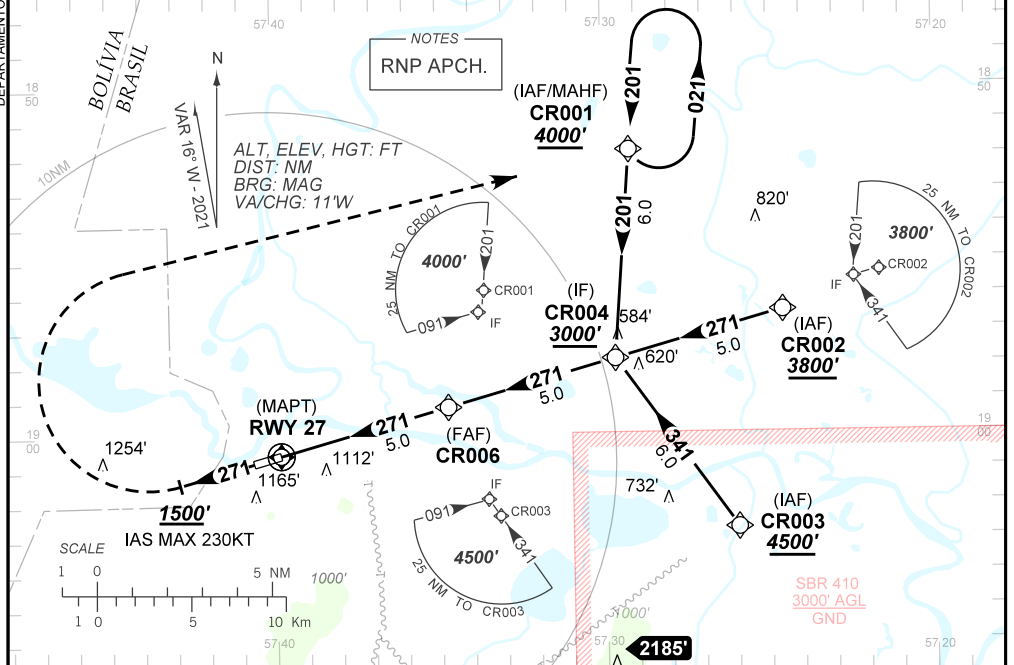
ATIS NIL	APP PUERTO SUAREZ 118.50	AFIS CORUMBÁ 119.50	TWR NIL	GNDC NIL
-------------	------------------------------------	-------------------------------	------------	-------------

TEMP LNAV/VNAV MIN 0°C / MAX 50°C	FINAL CRS 271°	FAF: 2110'	LNAV/VNAV DA / (OCH): 1089' / (627')	LNAV MDA / (OCH): 1210' / (750')
---	--------------------------	----------------------	--	--

APCH Perdida: 1) Subir para **4000'**. Manter rumo **271** até **1500'**. Após, curvar à DIREITA direto CR001 para espera. 2) IAS MAX 230KT até **1500'**.
Missed APCH: 1) Climb to **4000'**. Maintain course **271** until **1500'**. After, turn RIGHT direct to CR001 for holding. 2) IAS MAX 230KT until **1500'**.

RMK: NIL.

DEPARTAMENTO DE CONTROLE DO ESPAÇO AÉREO



RWY27	1.8	2.2	3.0	4.0	CR006		Ground Speed (KT)	090	110	130	150	170	190
ALT	1089	1210	1468	1787	2110		FPM	500	600	700	800	N/A	
(HGT)	627	750	1005	1324	1642		FAF-MAPT	NIL					

STRAIGHT-IN	CAT	A	B	C	D	E
	DA / (OCH)	1089' / (627')				
LNAV/VNAV	ALS/NO ALS/ RVR ALS (m)	NIL / 2900 / NIL				
	MDA / (OCH)	1210' / (750')				
LNAV	ALS/NO ALS/ RVR ALS (m)	NIL / 2900' / NIL		NIL / 3500' / NIL		NA
	MDA / (OCH)					NA
CIRCLING	MDA / (OCH)					NA
	VIS (m)					NA

CHANGES: FREQ, IDENT, LAYOUT, PROC, RMK, VAR.