

**INSTRUMENT APPROACH
CHART (IAC)**

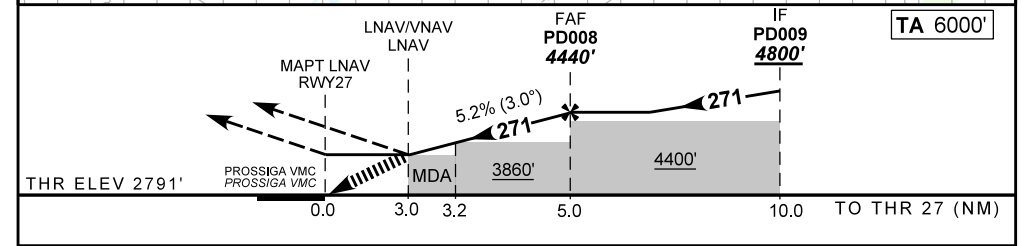
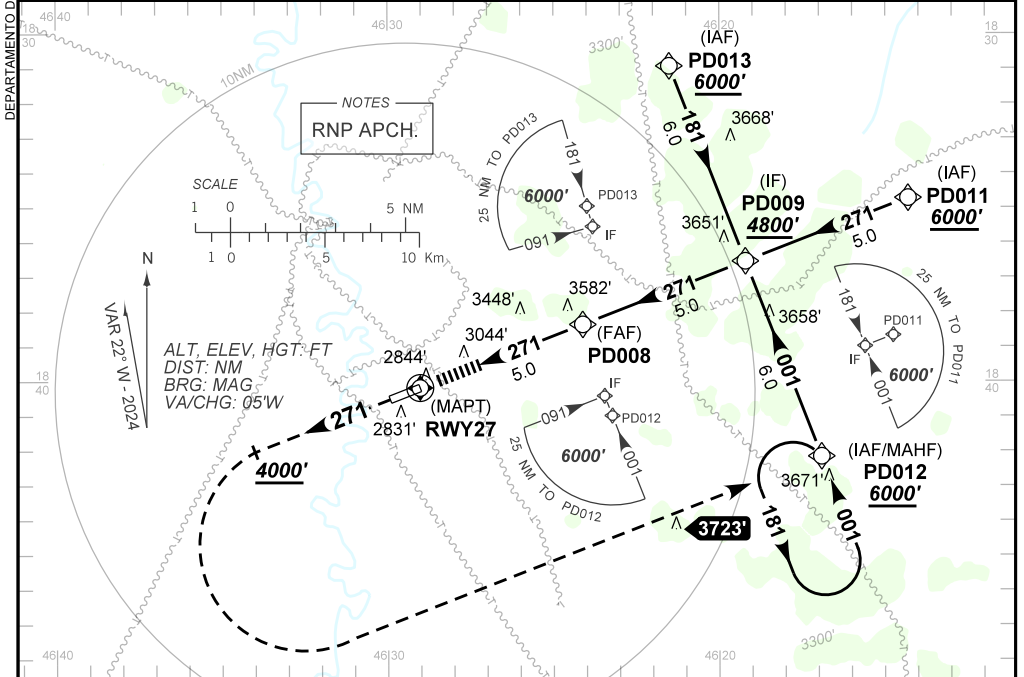
PATOS DE MINAS / Patos de Minas (SNPD)

AD ELEV: 2794'

RNP RWY 27

ATIS NIL	ERAA 127.80	APP NIL	TWR NIL	GNDC NIL
TEMP LNAV/VNAV MIN 0°C / MAX 50°C	FINAL CRS 271°	FAF: 4440'	LNAV/VNAV DA / (OCH): 3791' / (1000')	LNAV MDA / (OCH): 3800' / (1000')

APCH Perdida: Subir para **6000'**. Manter proa **271** até **4000'**. Após, curvar à ESQUERDA direto PD012 para espera.
 Missed APCH: Climb to **6000'**. Maintain heading **271** until **4000'**. After, turn LEFT direct PD012 for holding.
 RMK: Prosseguir VMC a partir de 3NM do MAPT ou efetuar aproximação perdida.
 Proceed VMC at 3NM to MAPT or perform the Missed Approach.



RWY27	3.0	3.2	4.0	PD008			Ground Speed (KT)	090	110	130	150	170	190
ALT	3800	3860	4115	4440			FPM	500	600	700	800	900	NA
(HGT)	1000	1069	1324	1649			FAF-MAPT	NIL					

STRAIGHT-IN	CAT	A	B	C	D	E
	DA / (OCH)	3791' / (1000')				
LNAV/VNAV	ALS/NO ALS/ RVR ALS (m)	NIL / 5000 / NIL				
	LNAV	MDA / (OCH)	3800' / (1000')			
ALS/NO ALS/ RVR ALS (m)		NIL / 5000 / NIL				
CIRCLING	MDA / (OCH)	NA				
	VIS (m)					

CHANGES: NEW CHART.

DEPARTAMENTO DE CONTROLE DO ESPAÇO AÉREO