

STANDARD DEPARTURE CHART  
INSTRUMENT (SID)

SALVADOR / Deputado Luis Eduardo Magalhães, INTL (SBSV)

RWY 28

AD ELEV: 66'

BIVOV 1C - BIVOV 1D - KIBIX 1C

TA 7000'	D-ATIS 127.75	TWR SALVADOR 118.30 118.60 118.95 121.10	APP SALVADOR 119.35 119.80 120.80 129.45	ACC RECIFE 123.80 125.10 126.00 128.35 128.80 135.30 135.65
----------	------------------	--	--	---

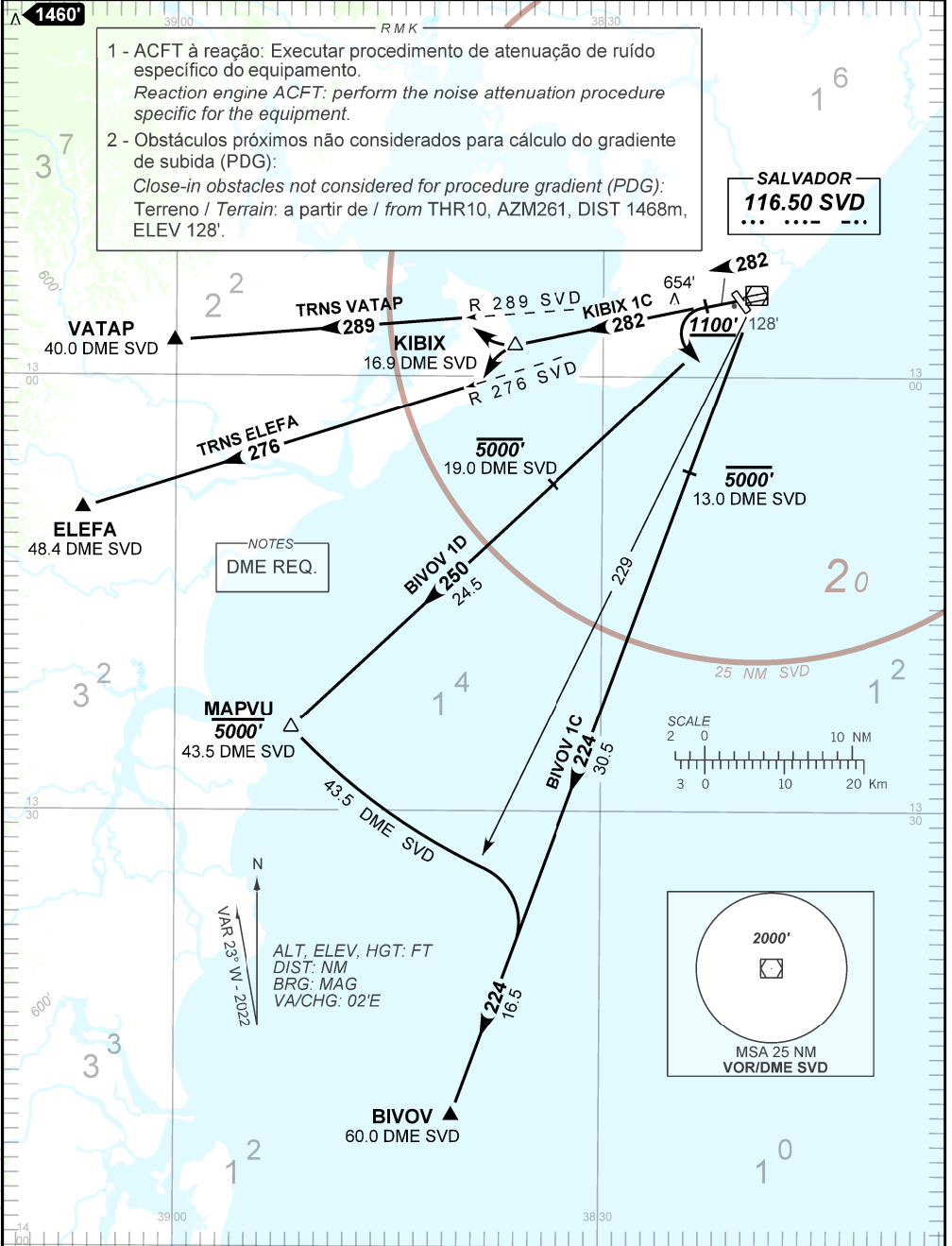
DEPARTAMENTO DE CONTROLE DO ESPAÇO AÉREO

CHANGES PROC.

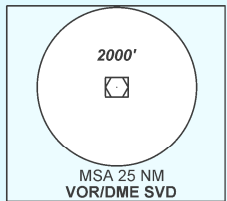
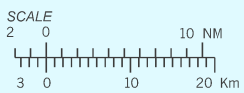
1 - ACFT à reação: Executar procedimento de atenuação de ruído específico do equipamento.  
*Reaction engine ACFT: perform the noise attenuation procedure specific for the equipment.*

2 - Obstáculos próximos não considerados para cálculo do gradiente de subida (PDG):  
*Close-in obstacles not considered for procedure gradient (PDG):*  
Terreno / Terrain: a partir de / from THR10, AZM261, DIST 1468m, ELEV 128'.

**SALVADOR**  
**116.50 SVD**  
... ..



NOTES  
DME REQ.



ALT, ELEV, HGT: FT  
DIST: NM  
BRG: MAG  
VA/CHG: 02°E