

**INSTRUMENT APPROACH
CHART (IAC)**

SANTO ÂNGELO / Santo Ângelo (SBNM)

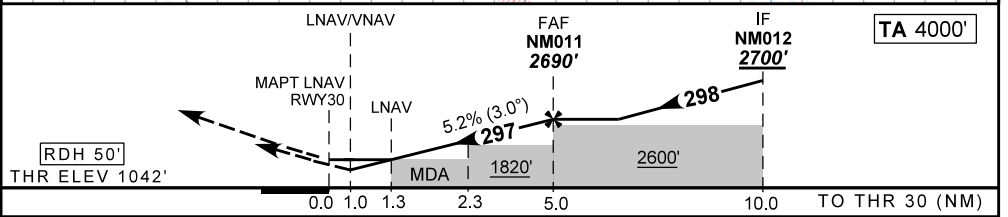
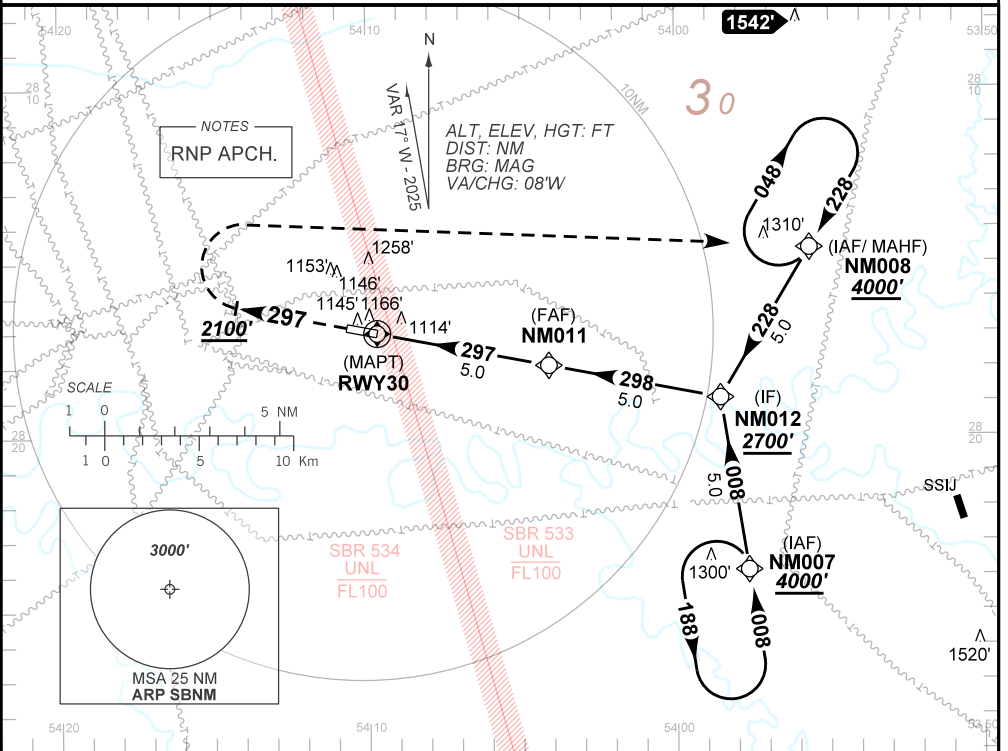
RNP RWY 30
(CAT A, B, C)

AD ELEV: 1056'

ATIS NIL	APP NIL	AFIS SANTO ÂNGELO 131.65	GNDC NIL
TEMP LNAV/VNAV MIN -10°C / MAX 50°C	FINAL CRS 297°	FAF: 2690'	LNAV/VNAV DA / (OCH): 1402' / (360')
		LNAV MDA / (OCH): 1490' / (450')	

APCH Perdida: Subir para **4000'** na proa **297'**. Após **2100'** curvar à DIREITA direto NM008 para espera.
Missed APCH: Climb to **4000'** on heading **297'**. After **2100'**, turn RIGHT direct NM008 for holding.

DEPARTAMENTO DE CONTROLE DO ESPAÇO AÉREO



RWY30	1.3	2.3	3.0	4.0	NM011		Ground Speed (KT)	090	110	130	150	170	190
ALT	1490	1824	2047	2366	2690		FPM	500	600	700	800	NA	
(HGT)	450	782	1005	1324	1648		FAF-MAPT	NIL					

STRAIGHT-IN	CAT	A	B	C	D	E
	DA / (OCH)	1402' / (360')				
LNAV/VNAV	ALS/NO ALS/ RVR ALS (m)	NIL / 1600 / NIL				NA
	MDA / (OCH)	1490' / (450')				
LNAV	ALS/NO ALS/ RVR ALS (m)	NIL / 1600 / NIL		NIL / 2100 / NIL		
	MDA / (OCH)	NA				
CIRCLING	MDA / (OCH)	NA				
	VIS (m)	NA				

CHANGES: LAYOUT, OBST, PROC, VAR