

**INSTRUMENT APPROACH
CHART (IAC)**

SANTA ROSA DO PURUS / Santa Rosa do Purus (SSRA)

RNP RWY 18

(CAT A, B)

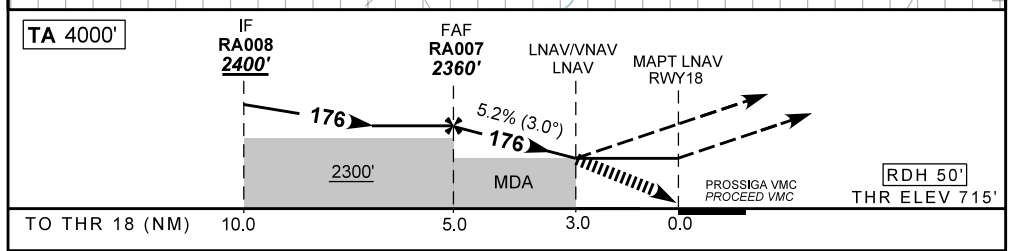
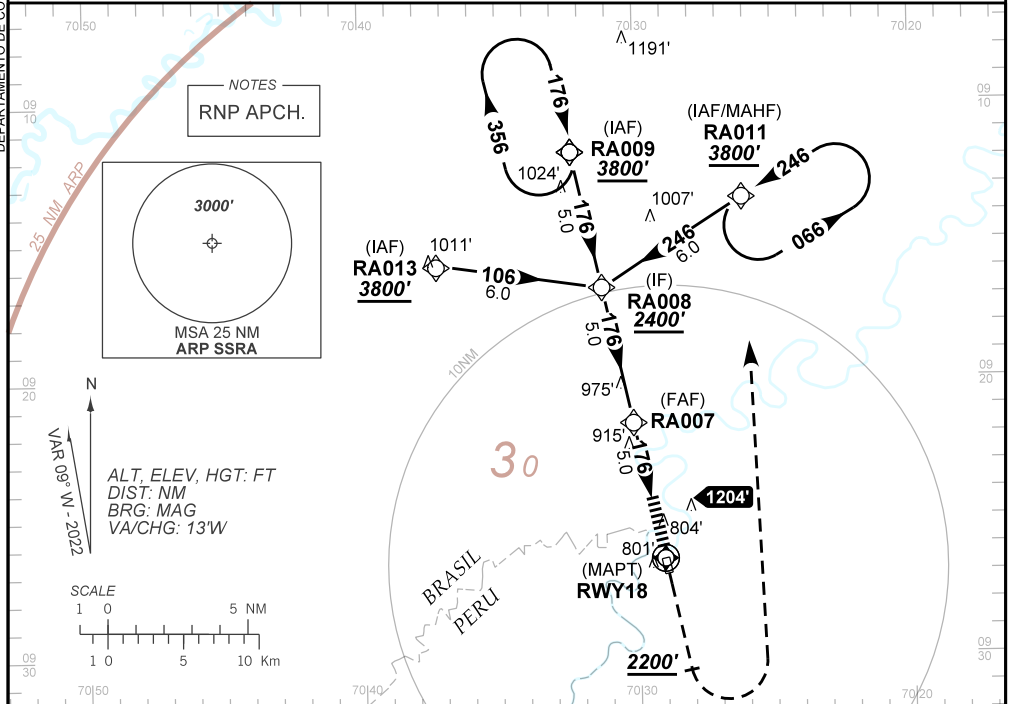
AD ELEV: 721'

ATIS NIL	ERA NIL	APP NIL	TWR NIL	GNDC NIL
-------------	------------	------------	------------	-------------

TEMP LNAV/VNAV MIN -10°C / MAX 50°C	FINAL CRS 176°	FAF: 2360'	LNAV/VNAV DA / (OCH): 1715' / (1000')	LNAV MDA / (OCH): 1720' / (1000')
---	--------------------------	----------------------	---	---

APCH Perdida: Subir para **3800'**. Manter proa **176** até **2200'**. Após, curvar à ESQUERDA direto RA011 para espera.
Missed APCH: Climb to **3800'**. Maintain heading **176** until **2200'**. After, turn LEFT direct RA011 for holding.

DEPARTAMENTO DE CONTROLE DO ESPAÇO AÉREO



	RA007	4.0	3.0	RWY18	Ground Speed (KT)	090	110	130	150	170	190
	2360	2039	1720	ALT	FPM	500	600	700		NA	
	1645	1324	1005	(HGT)	FAF-MAPT	NIL					

STRAIGHT-IN	CAT	A	B	C	D	E
	LNAV/VNAV	DA / (OCH)	1715' / (1000')		NA	
LNAV	MDA / (OCH)	1720' / (1000')		NA		
	ALS/NO ALS/ RVR ALS (m)	NIL / 5000 / NIL		NA		
CIRCLING	MDA / (OCH)	1720' / (1000')		NA		
	VIS (m)	NIL / 5000 / NIL		NA		

CHANGES: NEW CHART.