

INSTRUMENT APPROACH CHART (IAC)

CANOAS / Campo Nossa Senhora de Fátima, MIL (SBCO)

**USO EXCLUSIVO ACFT MILITARES
MILITARY ACFT ONLY**

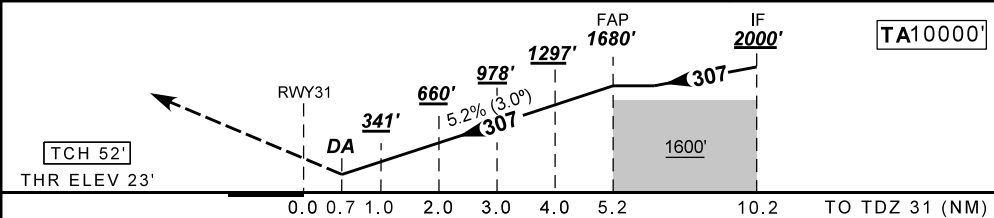
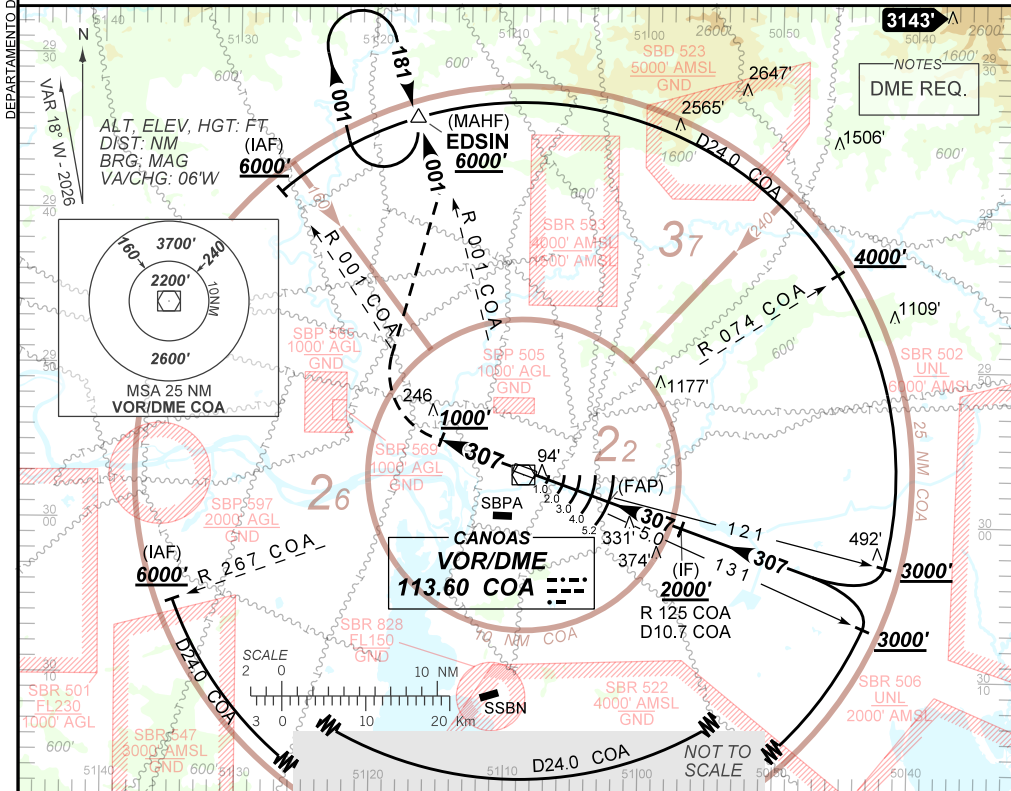
PAR Y RWY 31

AD ELEV: 26'

ATIS NIL	APP PALEGRE 119.00 120.10 120.55 128.90	PAR CANOAS 129.15 134.80	TWR CANOAS 118.50 122.80 (MIL)	GND C CANOAS 121.70
N/A	FINAL CRS 307°	FAP: 1680'	PAR DA / (OCH): 289' / (266')	N/A

APCH Perdida: Subir para **6000'**. Manter proa **307** até **1000'**. Após, curvar à DIREITA para interceptar RDL **001** do VOR COA até EDSIN para espera.

Missed APCH: Climb to **6000'**. Maintain heading **307** until **1000'**. After, turn RIGHT to intercept **001** RDL COA VOR until EDSIN for holding.



TDZ31	0.7	1.0	2.0	3.0	4.0	FAP	Ground Speed (KT)	090	110	130	150	170	190
ALT	289	342	660	979	1297	1680	FPM	500	600	700	800	900	1000
(HGT)	266	319	637	956	1274	1657	FAP-MAPT	NA					

STRAIGHT-IN	CAT	A	B	C	D	E
PAR	DA / (OCH)	289' / (266')				
	ALS/NO ALS/ RVR ALS (m)	NIL / 1300 / NIL				

AIRAC AMDT 2604A1 16 APR 26

SBCO_IAC_01U/1/1
IAC PAR Y RWY 31

USO EXCLUSIVO ACFT MILITARES / MILITARY ACFT ONLY

CHANGES: HDG, TA, VAR.

DEPARTAMENTO DE CONTROLE DO ESPAÇO AÉREO