

**INSTRUMENT APPROACH  
CHART (IAC)**

**ORIXIMINÁ / Trombetas (SBT)**

**RNP RWY 09**

CAT (A, B, C)

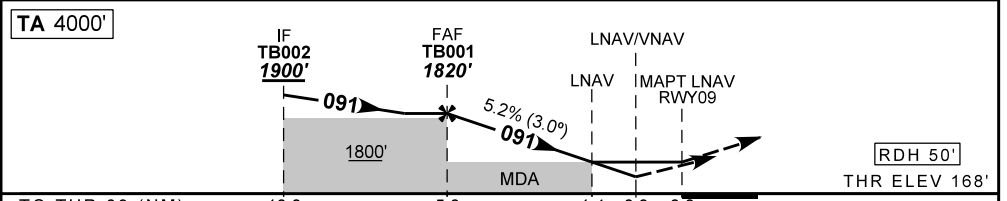
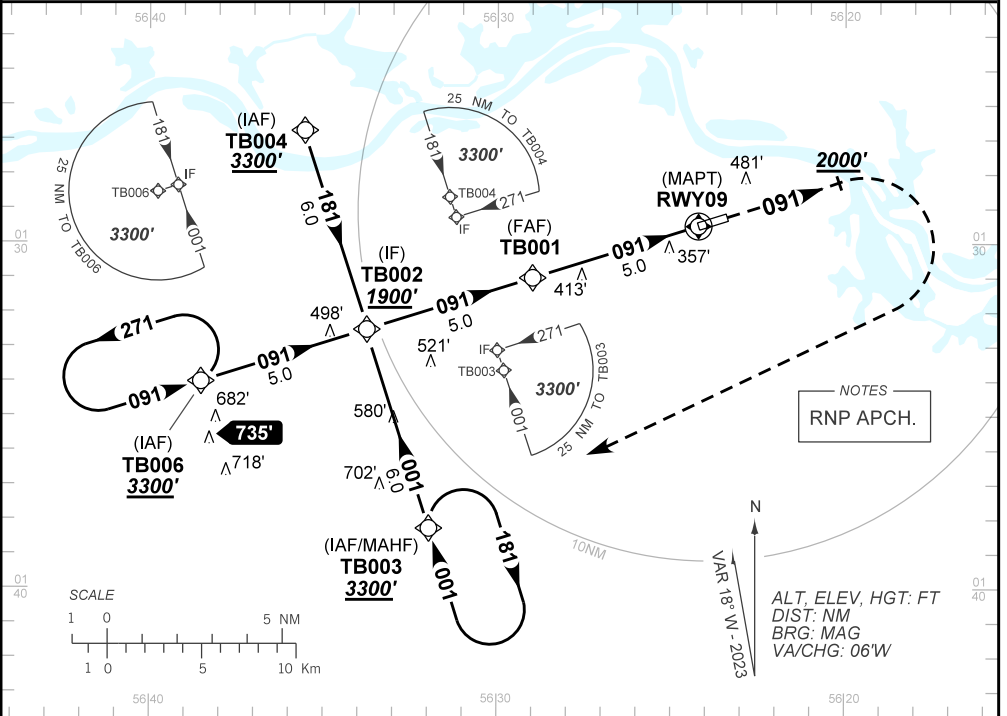
**AD ELEV: 168'**

ATIS <b>NIL</b>	APP <b>NIL</b>	AFIS TROMBETAS <b>131.60</b>	GNDC <b>NIL</b>
TEMP LNAV/VNAV <b>MIN 0°C / MAX 50°C</b>	FINAL CRS <b>091°</b>	FAF: <b>1820'</b>	LNAV MDA / (OCH): <b>660' / (500')</b>
		LNAV/VNAV DA / (OCH): <b>508' / (340')</b>	

APCH Perdida: Subir para **3300'**. Manter rumo **091** até **2000'**. Então, curvar à DIREITA direto TB003 para espera.

Missed APCH: Climb to **3300'**. Maintain course **091** until **2000'**. Then, turn RIGHT direct TB003 for holding.

DEPARTAMENTO DE CONTROLE DO ESPAÇO AEREO



	<b>TB001</b>	<b>4.0</b>	<b>3.0</b>	<b>2.0</b>	<b>1.4</b>	<b>RWY09</b>	Ground Speed (KT)	<b>090</b>	<b>110</b>	<b>130</b>	<b>150</b>	<b>170</b>	<b>190</b>
	<b>1820</b>	<b>1492</b>	<b>1173</b>	<b>855</b>	<b>660</b>	<b>ALT</b>	FPM	<b>500</b>	<b>600</b>	<b>700</b>	<b>800</b>	<b>800</b>	<b>NA</b>
	<b>1652</b>	<b>1324</b>	<b>1005</b>	<b>687</b>	<b>500</b>	<b>(HGT)</b>	FAF-MAPT	<b>NA</b>					

STRAIGHT-IN	CAT	A	B	C	D	E
	DA / (OCH)	<b>508' / (340')</b>				
LNAV/VNAV	ALS/NO ALS/ RVR ALS (m)	<b>NIL / 1600 / NIL</b>				<b>NA</b>
	MDA / (OCH)	<b>660' / (500')</b>				
LNAV	ALS/NO ALS/ RVR ALS (m)	<b>NIL / 1600 / NIL</b>		<b>NIL / 2300 / NIL</b>		
	MDA / (OCH)					
CIRCLING	MDA / (OCH)					
	VIS (m)					

CHANGES: AD ELEV, ALT, HDG, OCH, THR ELEV, VAR