

**INSTRUMENT APPROACH
CHART (IAC)**

ALTA FLORESTA / Aeroporto Piloto Osvaldo Marques Dias (SBAT)

AD ELEV: 948'

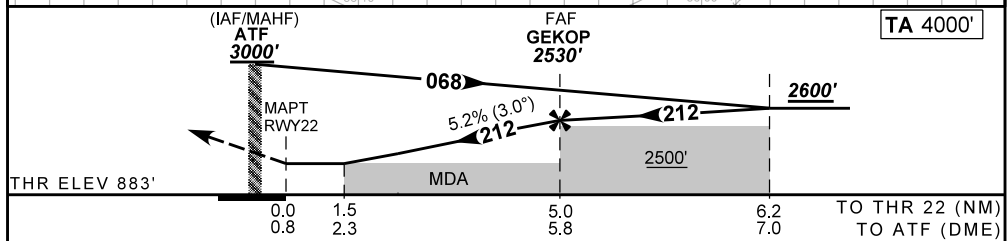
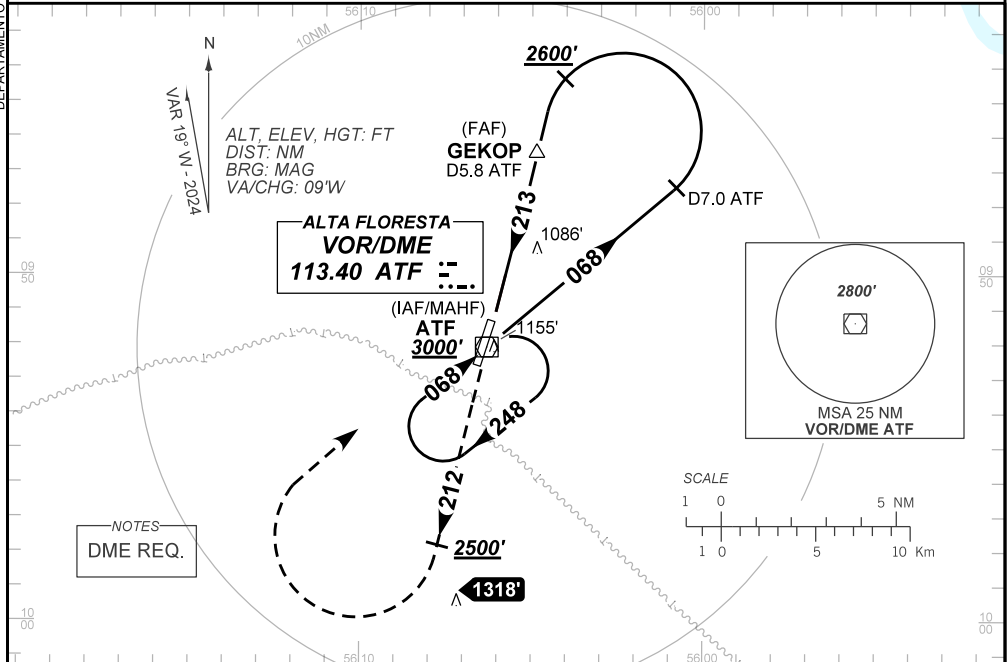
VOR Z RWY 22

ATIS NIL	APP NIL	AFIS FLORESTA 126.60	GNDC NIL	
VOR ATF 113.40	FINAL CRS 212°	FAF: 2530'	N/A	VOR MDA / (OCH): 1410' / (530')

APCH Perdida: Subir para **3000'**. Manter a RDL **212** do VOR ATF até **2500'**. Após, curvar à DIREITA direto VOR ATF para espera.

Missed APCH: Climb to **3000'**. Maintain RDL **212** ATF VOR until **2500'**. After, turn RIGHT direct ATF VOR for holding.

DEPARTAMENTO DE CONTROLE DO ESPAÇO AÉREO



CHANGES: LAYOUT, PROC. VAR.

RWY22	1.5	2.0	3.0	4.0	GEKOP		Ground Speed (KT)	090	110	130	150	170	190
ALT	1410	1570	1888	2207	2530		FPM	500	600	700	800	900	NA
(HGT)	530	687	1005	1324	1647		FAF-MAPT	NIL					

STRAIGHT-IN	CAT	A	B	C	D	E
VOR	MDA / (OCH)	1410' / (530')				NA
	ALS/SNO ALS/ RVR ALS (m)	NIL / 1600 / NIL		NIL / 2400 / NIL		
CIRCLING	MDA / (OCH)	NA				
	VIS (m)					