

**INSTRUMENT APPROACH
CHART (IAC)**

CURITIBA / Afonso Pena, INTL (SBCT)

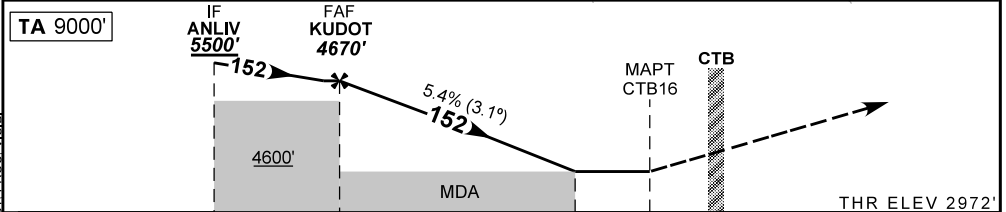
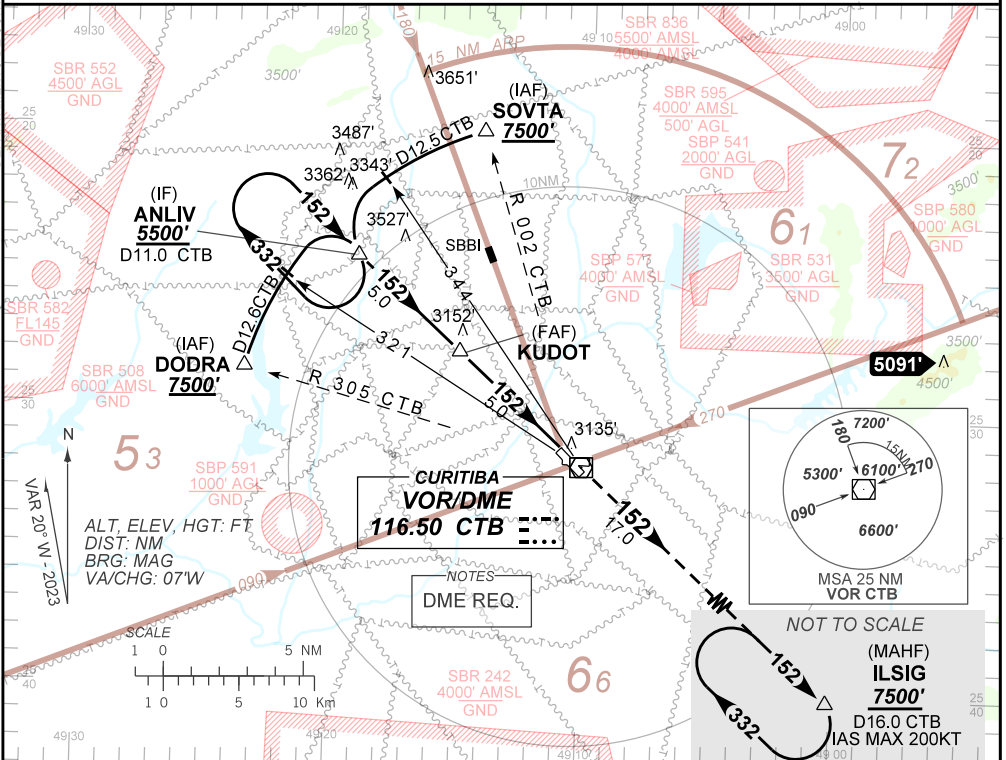
AD ELEV: 2989'

VOR Z RWY 15

D. ATIS 127.80	APP CURITIBA 119.70 119.95 120.65 120.95 129.55 133.15	TWR CURITIBA 118.15	GNDC CURITIBA 121.90
VOR CTB 116.50 MHz	FINAL CRS 152°	FAF: 4670'	VOR MDA / (OCH): 3370' / (400')

APCH perdida: 1) Subir para **7500'**. Manter RDL **152** VOR CTB até ILSIG para espera.
Missed APCH: 1) Climb to **7500'**. Maintain **152** RDL CTB VOR until ILSIG for holding.

DEPARTAMENTO DE CONTROLE DO ESPAÇO AÉREO



TO THR 15 (NM)	10.0	5.0	1.1	0.0	
TO CTB (DME)	11.0	6.0	2.1	1.0	

KUDOT	4.0	3.0	2.0	1.1	RWY15	
4670	4338	4009	3680	3370	ALT	
1698	1366	1037	708	400	(HGT)	

Ground Speed (KT)	090	110	130	150	170	190
FPM	500	600	700	800	900	NA
FAF-MAPT 5NM	NA					

STRAIGHT-IN	CAT	A	B	C	D	E
VOR	MDA / (OCH)	3370' / (400')				NA
	ALS / NO ALS / RVR ALS (m)	800 / 1600 / 700				
CIRCLING	MDA / (OCH)	NA				NA
	VIS (m)	NA				

CHANGES: EAC, LAYOUT, MIN, OPR, OBST, PROC, VISIB.