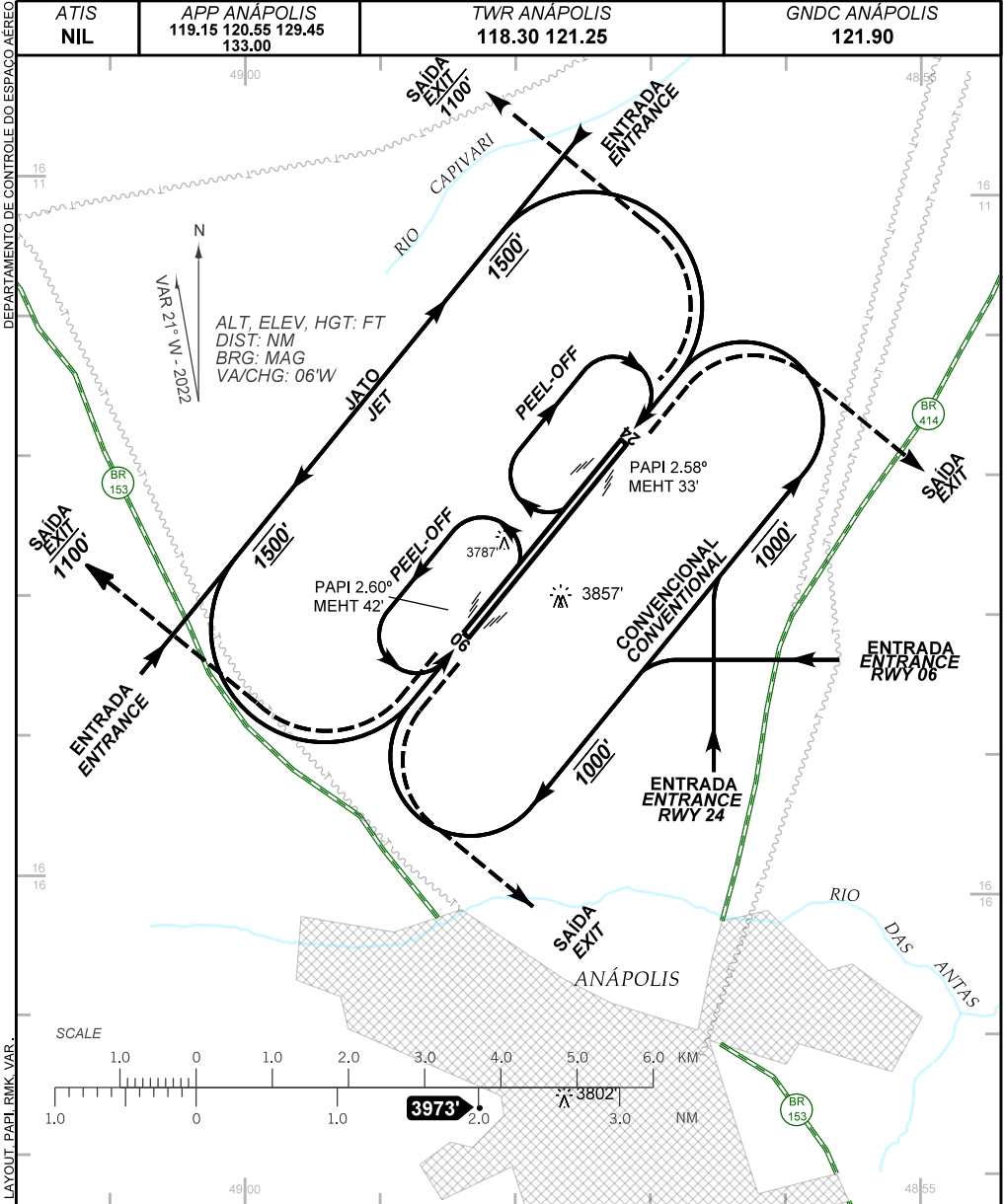


VISUAL APPROACH CHART
(VAC)

ANÁPOLIS / Campo Marechal Márcio de Souza e Mello, MIL (SBAN)

AD ELEV: 3732'

RWY 06 / 24



CHANGES: AD ELEV, IDENT, LAYOUT, PAPI, RMK, VAR.

RMK: 1) É COMPULSÓRIO O CIRCUITO DE TRÁFEGO PARA AVIÕES A JATO NO SETOR NOROESTE DA RWY A 1500FT DE ALTURA.
TRAFFIC CIRCUIT IS MANDATORY FOR JET AIRCRAFT IN THE NORTHWEST SECTOR OF RWY AT 1500 FT OF HEIGHT.

2) INFORMAÇÕES COMPLEMENTARES NO VERSO.
SEE REVERSE SIDE FOR ADDITIONAL INFORMATION.

— RMK —

- 3) É COMPULSÓRIO O CIRCUITO DE TRÁFEGO PARA AVIÕES CONVENCIONAIS NO SETOR SUDESTE DA RWY A 1000FT.

TRAFFIC CIRCUIT IS MANDATORY FOR CONVENTIONAL AIRCRAFT IN THE SOUTHEAST SECTOR OF RWY AT 1000 FT.

- 4) TODOS OS CIRCUITOS DE TRÁFEGO SERÃO COORDENADOS PELA TWR ANÁPOLIS DE ACORDO COM A RWY EM USO.

ALL TRAFFIC CIRCUITS WILL BE COORDINATED BY TWR-ANAPOLIS, ACCORDING TO THE RWY IN USE.