

**INSTRUMENT APPROACH  
CHART (IAC)**

**TEFÉ / Tefé (SBTF)**

**AD ELEV: 186'**

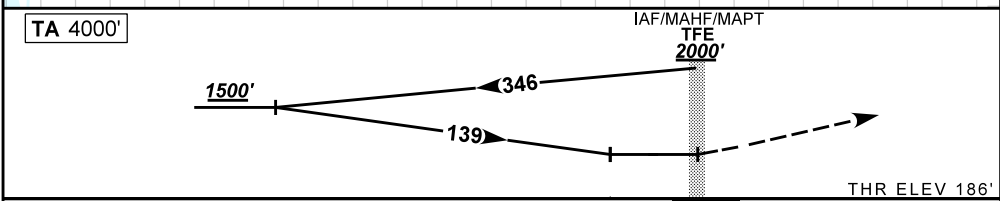
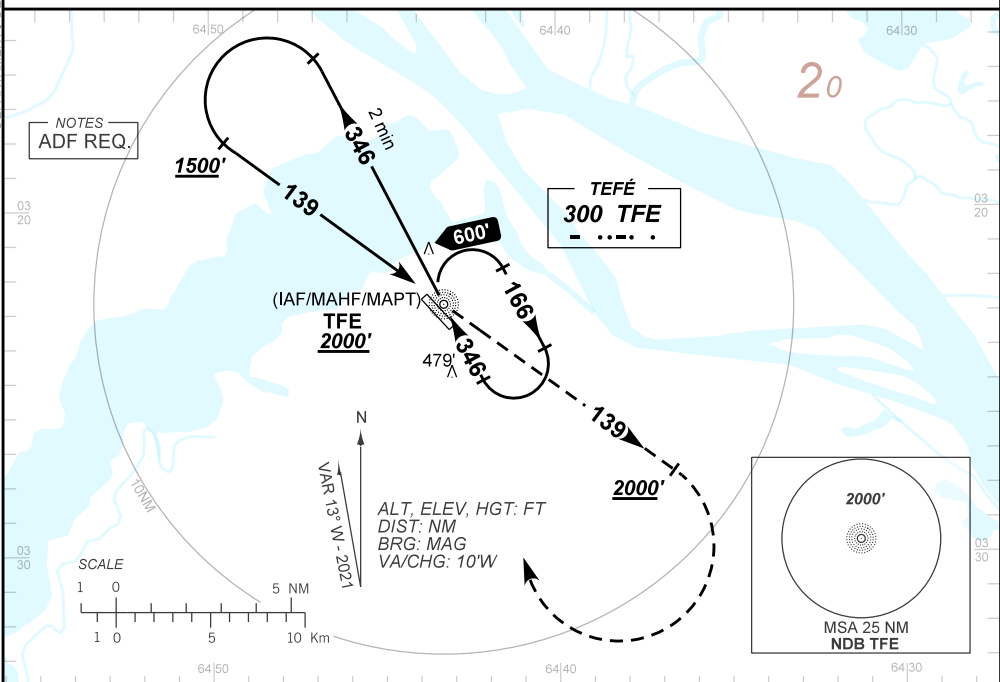
**NDB RWY 15**

ATIS NIL	APP NIL	AFIS TEFÉ 125.60	GNDC NIL
NDB TFE 300 KHz	FINAL CRS 139°	N/A	NDB MDA / (OCH): <b>710' / (530')</b>

APCH Perdida: Subir para **2000'** no QDR **139** NDB TFE. Após, curvar à DIREITA direto NDB TFE para espera.  
Missed APCH: Climb to **2000'** on **139** QDR TFE NDB. After, turn RIGHT direct to TFE NDB for holding.

RMK: NIL.

DEPARTAMENTO DE CONTROLE DO ESPAÇO AÉREO



NIL	RWY15	KT	090	110	130	160	170	190
NIL	ALT	FPM	630			NA		
NIL	(HGT)	FAF-MAPT						

STRAIGHT-IN	CAT	A	B	C	D	E
NDB	MDA / (OCH)	710' / (530')			NA	
	ALS/NO ALS/ RVR ALS (m)	NIL / 1600 / NIL		NIL / 2400 / NIL		
CIRCLING	MDA / (OCH)	NA				
	VIS (m)					

CHANGES: LAYOUT, MDA, PROC, TA, THEL