

INSTRUMENT APPROACH
CHART (IAC)

BELO HORIZONTE / Tancredo Neves, INTL (SBCF)

AD ELEV: 2721'

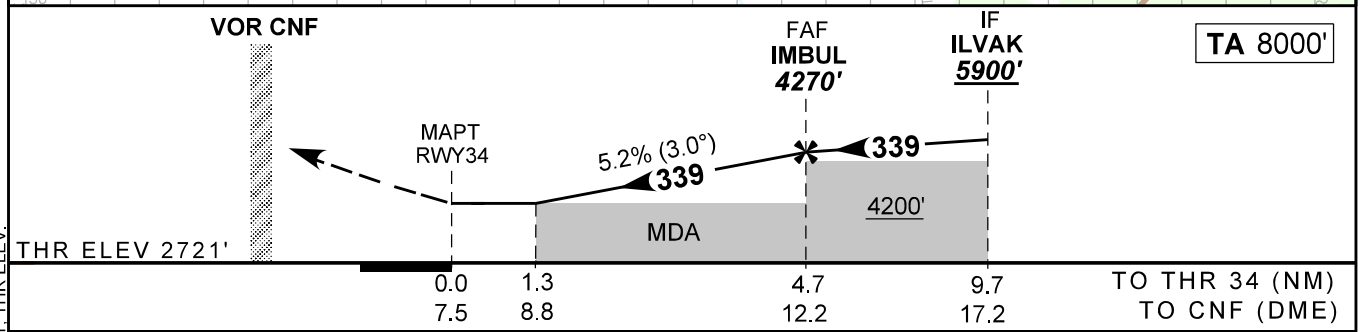
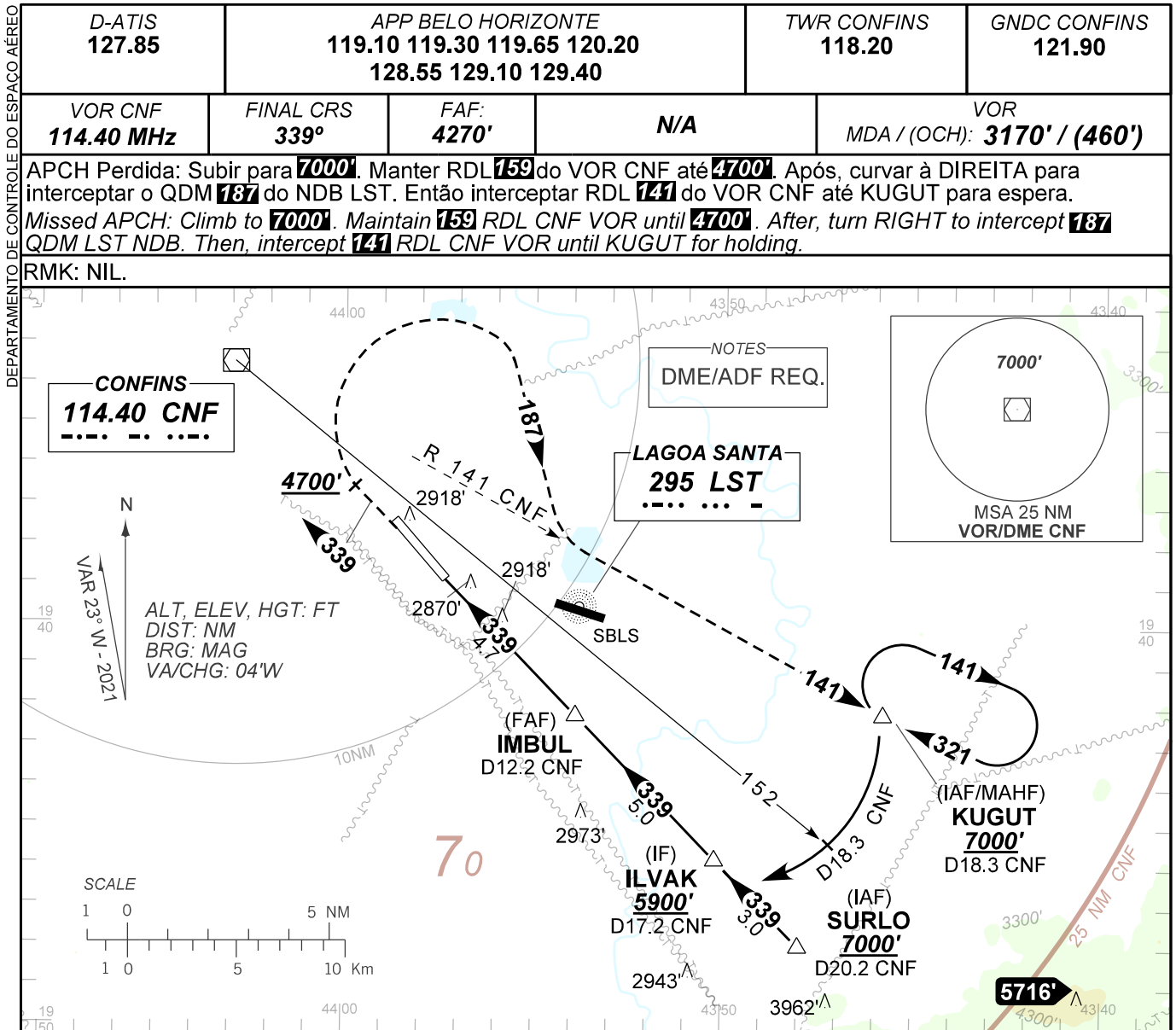
VOR Y RWY 34

D-ATIS 127.85	APP BELO HORIZONTE 119.10 119.30 119.65 120.20 128.55 129.10 129.40	TWR CONFINS 118.20	GNDC CONFINS 121.90
-------------------------	---	------------------------------	-------------------------------

VOR CNF 114.40 MHz	FINAL CRS 339°	FAF: 4270'	N/A	VOR MDA / (OCH): 3170' / (460')
------------------------------	--------------------------	----------------------	-----	---

APCH Perdida: Subir para **7000'**. Manter RDL **159** do VOR CNF até **4700'**. Após, curvar à DIREITA para interceptar o QDM **187** do NDB LST. Então interceptar RDL **141** do VOR CNF até KUGUT para espera.
Missed APCH: Climb to **7000'**. Maintain **159** RDL CNF VOR until **4700'**. After, turn RIGHT to intercept **187** QDM LST NDB. Then, intercept **141** RDL CNF VOR until KUGUT for holding.

RMK: NIL.



RWY34	1.3	2.0	3.0	4.0	IMBUL		Ground Speed (KT)	090	110	130	150	170	190
ALT	3170	3408	3726	4045	4270		FPM	500	600	700	800	900	NA
(HGT)	460	687	1005	1324	1549		FAF-MAPT	NA					

STRAIGHT-IN	CAT	A	B	C	D	E
VOR	MDA / (OCH)	3170' / (460')				
	ALS/NO ALS/ RVR ALS (m)	NIL / 1600 / NIL		NIL / 2100 / NIL		
CIRCLING	MDA / (OCH)	NA				
	VIS (m)					