

**INSTRUMENT APPROACH CHART (IAC)**

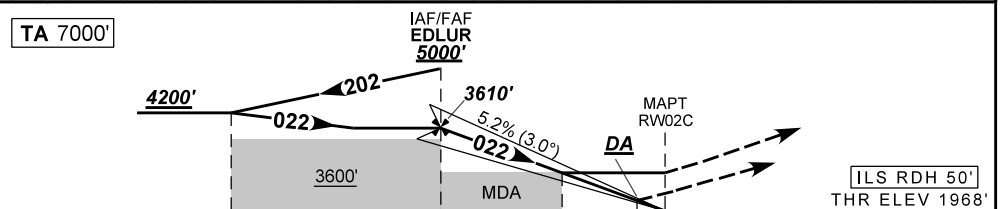
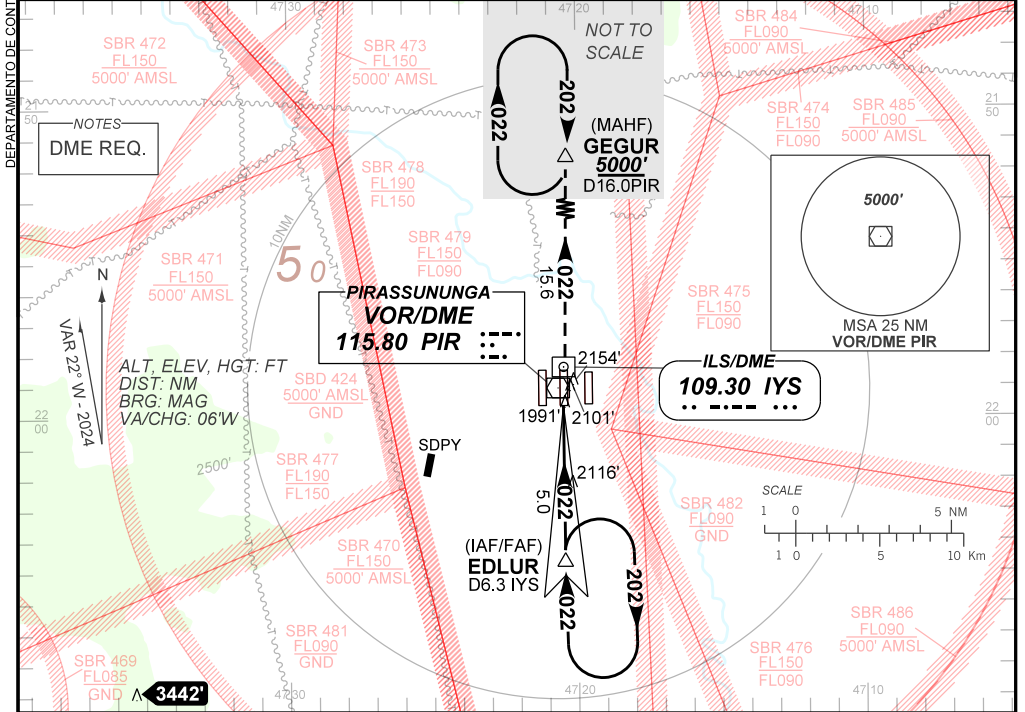
**PIRASSUNUNGA / Campo Fontenelle, MIL (SBYS)**

**AD ELEV: 1976'**

**ILS Z or LOC Z RWY 02C**

ATIS <b>127.70</b>		APP ACADEMIA <b>120.10 122.40 122.80 124.90 135.45</b>			TWR ACADEMIA <b>118.30</b>		GNDC ACADEMIA <b>121.90</b>	
LOC IYS <b>109.30 MHz</b>	FINAL CRS <b>022°</b>	FAF: <b>3610'</b>	CAT I			LOC		
DA / (OCH): <b>REFER TO MNM</b>			MDA / (OCH): <b>2410' / (450')</b>					

APCH Perdida: Subir para **5000'**. Manter a RDL **022** VOR PIR até GEGUR para espera.  
Missed APCH: Climb to **5000'**. Maintain **022** RDL PIR VOR until GEGUR for holding.



TO THR 02C (NM)	5.0	1.3	0.0
TO IYS (DME)	6.3	2.6	1.3

EDLUR	4.0	3.0	2.0	1.3	RW02C	Ground Speed (KT)	090	110	130	150	170	190
3610	3292	2973	2655	2410	ALT	FPM	500	600	700	800	900	1000
1642	1324	1005	687	450	(HGT)	FAF-MAPT	NA					

STRAIGHT-IN	CAT	A	B	C	D	E
CAT I	DA / (OCH)	2168' / (200')				2280' / (312')
	ALS/NO ALS/ RVR ALS (m)	NIL / 1200 / NIL				NIL / 1400 / NIL
LOC	MDA / (OCH)	2410' / (450')				
	ALS/NO ALS/ RVR ALS (m)	NIL / 1600 / NIL			NIL / 2100 / NIL	
CIRCLING	MDA / (OCH)	NA				
	VIS (m)	NA				

CHANGES: EAC, OCH, VIS.