

**INSTRUMENT APPROACH
CHART (IAC)**

SANTA MARIA / Santa Maria (SBSM)

**USO EXCLUSIVO ACFT MILITARES
MILITARY ACFT ONLY**

VOR Y RWY 11

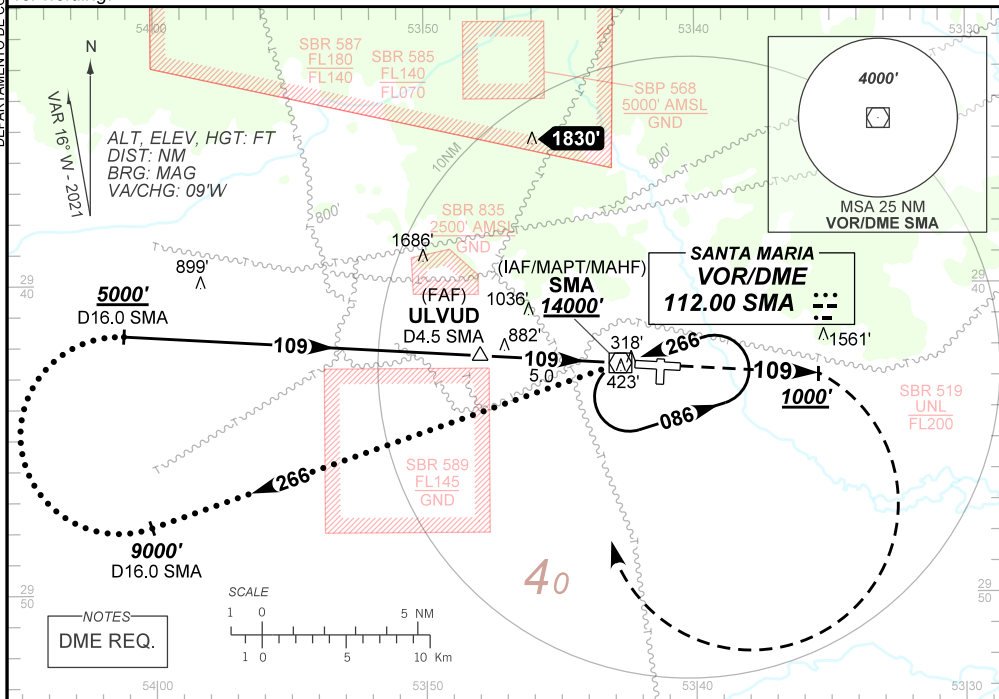
AD ELEV: 289'

ATIS 127.75	APP SANTA MARIA 119.35 121.35	TWR SANTA MARIA 118.30 118.85 122.80(MIL)	AFIS SANTA MARIA 119.35 121.35 118.30	GNDC NIL
VOR SMA 112.00 MHz	FINAL CRS 109°	FAF: 1930'	N/A	VOR MDA / (OCH): 760' / (470')

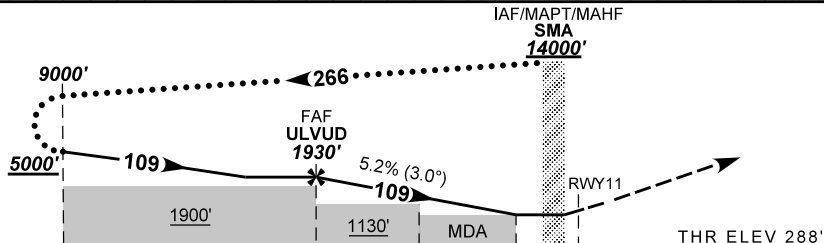
APCH Perdida: Subir para **14000'**. Manter RDL **109** do VOR SMA até **1000'**. Após, curvar à DIREITA direto VOR SMA para espera.

Missed APCH: Climb to **14000'**. Maintain **109** RDL SMA VOR until **1000'**. After, turn RIGHT direct SMA VOR for holding.

DEPARTAMENTO DE CONTROLE DO ESPAÇO AÉREO



TA 5000'



TO THR 11 (NM)	16.5	5.0	3.2	1.3	0.5	0.0	THR ELEV 288'
TO SMA (DME)	16.0	4.5	2.7	0.8	0.0		

	ULVUD	4.0	3.2	2.0	1.3	RWY11	Ground Speed (KT)	090	110	130	150	170	190
	1930	1612	1357	975	760	ALT	FPM	500	600	700	800	900	1000
	1642	1324	1069	687	470	(HGT)	FAF-MAPT	NA					

STRAIGHT-IN	CAT	A	B	C	D	E
	MDA / (OCH)	760' / (470')				
VOR	ALS/NO ALS/ RVR ALS (m)	800 / 1600 / 700			1500 / 2200 / 1400	
	MDA / (OCH)	NA				
CIRCLING	VIS (m)	NA				

CHANGES: EAC. LAYOUT.

AIRAC AMDT 2401A1 25 JAN 24

USO EXCLUSIVO ACFT MILITARES / MILITARY ACFT ONLY

**SBSM_IAC_00N 1/1
IAC VOR Y RWY 11**