

STANDARD DEPARTURE CHART SÃO PEDRO DA ALDEIA/Tenente Jorge Henrique Möller, MIL (SBES)
INSTRUMENT (SID)

RWY 25

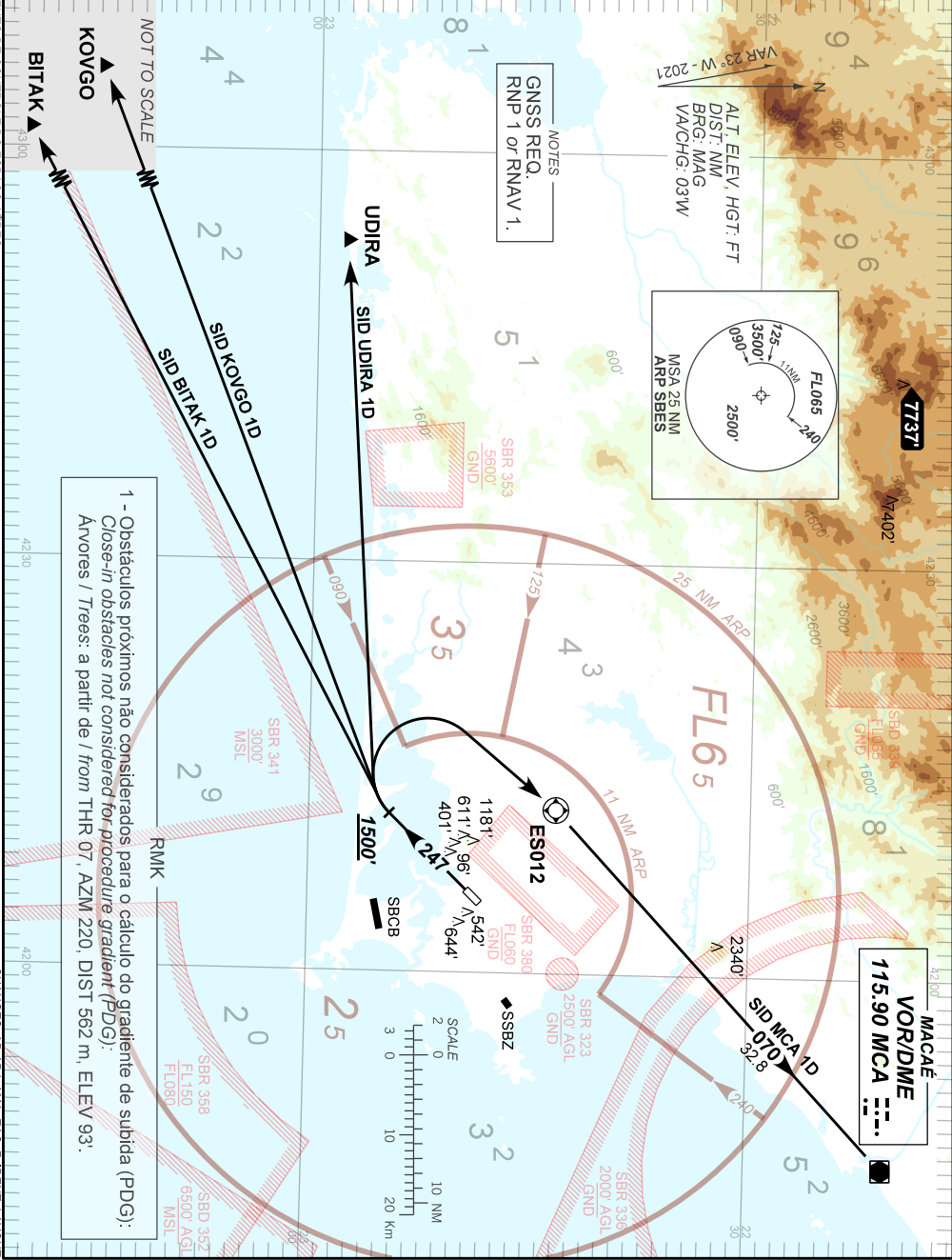
AD ELEV: 61'

RNAV BITAK 1D - KOVGO 1D - MCA 1D - UDIRA 1D

TA 5000'	ATIS NIL	TWR ALDEIA 118.30 122.80 (MIL)	APP ALDEIA 119.45 120.30	APP RIO 119.00 119.35 126.20 133.30	APP MACAÉ 119.20 120.00 129.30	ACC CURITIBA 133.40 133.60
----------	----------	--------------------------------------	-----------------------------	-------------------------------------------	--------------------------------------	-------------------------------

DEPARTAMENTO DE CONTROLE DO ESPAÇO AEREO

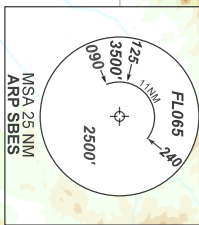
CHANGES: AD ADU, AMA, EAC, F, IDENT, LAYOUT.



1 - Obstáculos próximos não considerados para o cálculo do gradiente de subida (PDG):
Close-in obstacles not considered for procedure gradient (PDG):
Anvores / Trees: a partir de / from THR 07, AZM 220, DIST 562 m, ELEVY 93'.

NOTES
GNSS REQ.
RNP 1 or RNAV 1.

ALT. ELEVY, HGT. FT
DIST. NM
BRG: MAG
VA/CHG: 03W



MACAÉ
VORTME
115.90 MCA