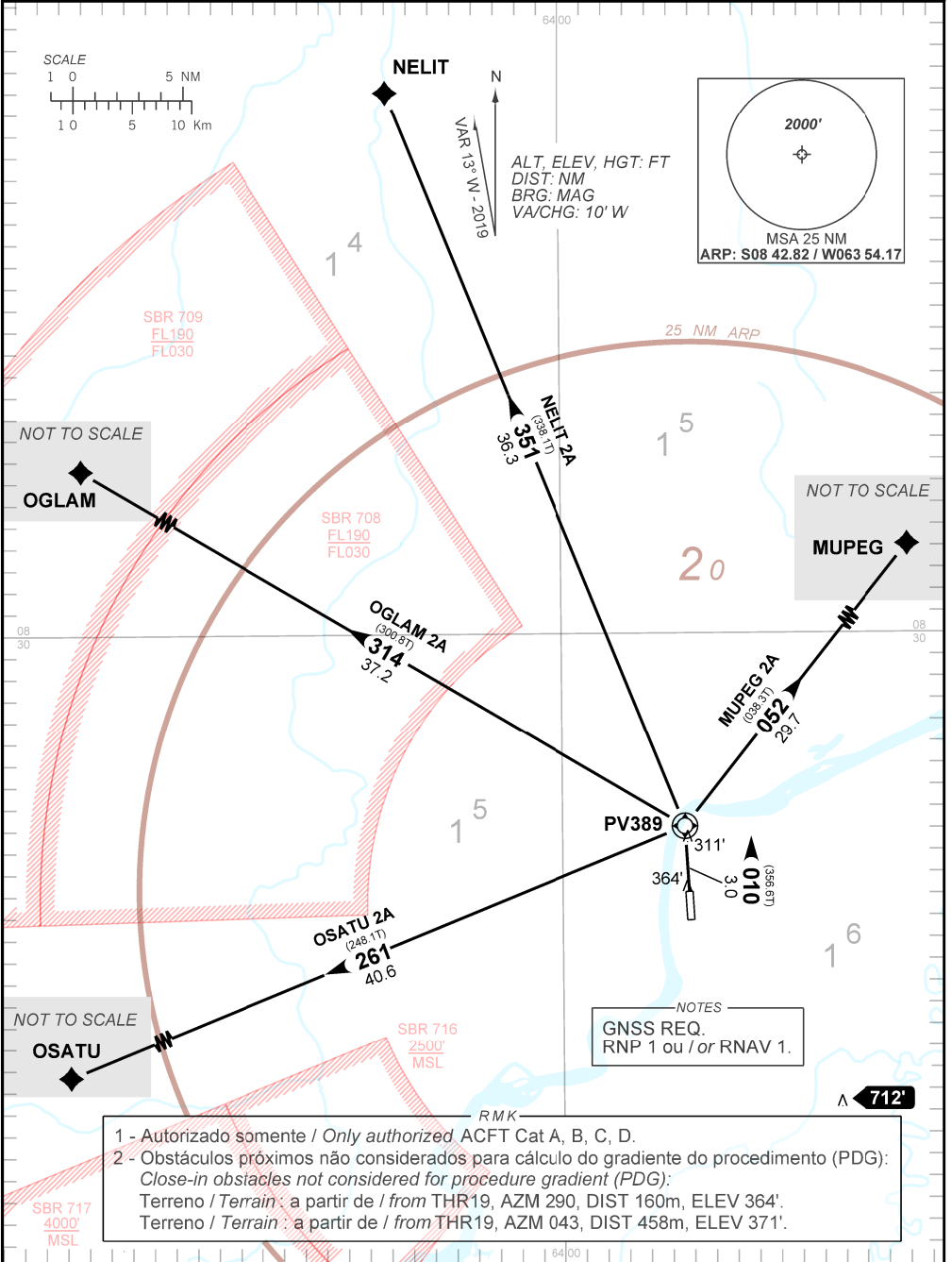


AD ELEV: 295'

RNAV MUPEG 2A - NELIT 2A - OGLAM 2A - OSATU 2A

TA 3000'	TWR PORTO VELHO 118.20 118.55 121.50	APP PORTO VELHO 120.25 120.80	ACC AMAZÔNICO 125.85 128.30 126.50 135.25 121.50
----------	---	----------------------------------	---



- 1 - Autorizado somente / Only authorized ACFT Cat A, B, C, D.
- 2 - Obstáculos próximos não considerados para cálculo do gradiente do procedimento (PDG):
Close-in obstacles not considered for procedure gradient (PDG):
Terreno / Terrain : a partir de / from THR19, AZM 290, DIST 160m, ELEV 364'.
Terreno / Terrain : a partir de / from THR19, AZM 043, DIST 458m, ELEV 371'.