

STANDARD DEPARTURE CHART
INSTRUMENT (SID)

GUARATINGUETÁ / Campo Edu Chaves (SBGW)

RWY 02 / 20

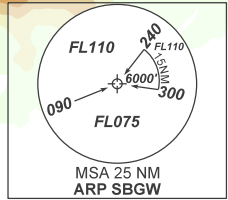
OMNI

AD ELEV: 1761'

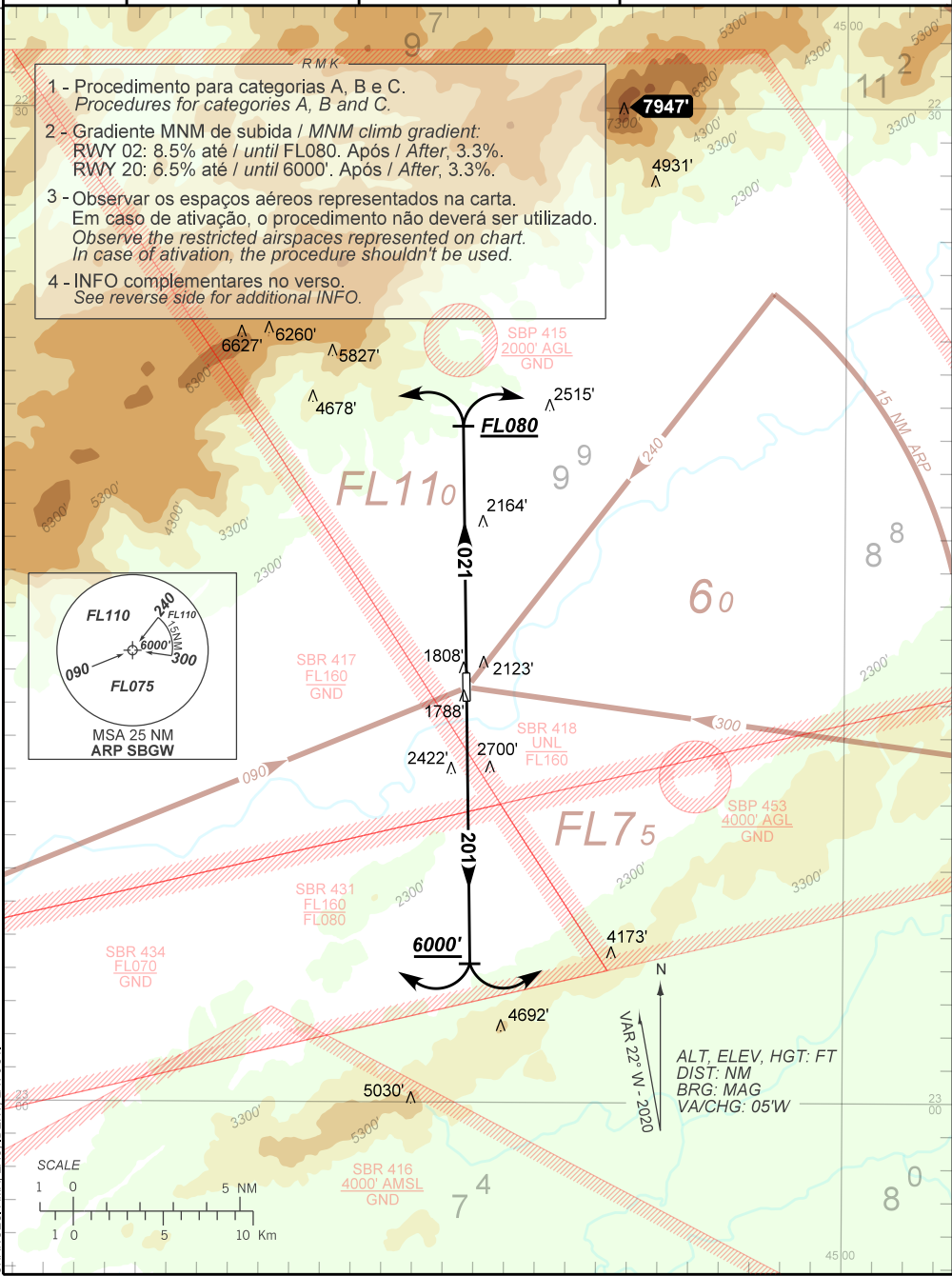
TA 7000'	TWR GUARÁ 118.15	APP GUARÁ 120.15	APP SÃO PAULO 121.35 124.70 123.90 125.60
----------	---------------------	---------------------	--

DEPARTAMENTO DE CONTROLE DO ESPAÇO AÉREO

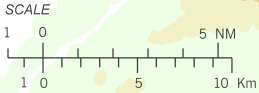
- 1 - Procedimento para categorias A, B e C.
Procedures for categories A, B and C.
- 2 - Gradiente MNM de subida / MNM climb gradient:
RWY 02: 8.5% até / until FL080. Após / After, 3.3%.
RWY 20: 6.5% até / until 6000'. Após / After, 3.3%.
- 3 - Observar os espaços aéreos representados na carta.
Em caso de ativação, o procedimento não deverá ser utilizado.
Observe the restricted airspaces represented on chart.
In case of activation, the procedure shouldn't be used.
- 4 - INFO complementares no verso.
See reverse side for additional INFO.



CHANGES: AMA, EAC, IDENT, LAYOUT.



VAR 22° W - 2020
ALT, ELEV, HGT: FT
DIST: NM
BRG: MAG
VA/CHG: 05'W



— R M K —

5 - Obstáculos próximos não considerados para o cálculo do gradiente (PDG):
Close-in obstacles not considered for procedure gradient (PDG):

RWY 02: Terreno / *terrain* a partir de / *from* THR 20, AZM 294, DIST 152m, ELEV 1808'.

RWY 20: Terreno / *terrain* a partir de / *from* THR 02, AZM 288, DIST 152m, ELEV 1788'.

Terreno / *terrain* a partir de / *from* THR 02, AZM 279, DIST 78m, ELEV 1782'.

Terreno / *terrain* a partir de / *from* THR 02, AZM 150, DIST 229m, ELEV 1795'.

Terreno / *terrain* a partir de / *from* THR 02, AZM 164, DIST 381m, ELEV 1818'.