

**INSTRUMENT APPROACH
CHART (IAC)**

CANOAS / Campo Nossa Senhora de Fátima, MIL (SBCO)

VOR Z RWY 13

AD ELEV: 26'

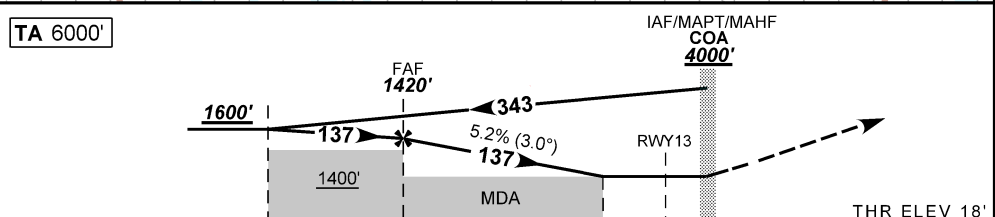
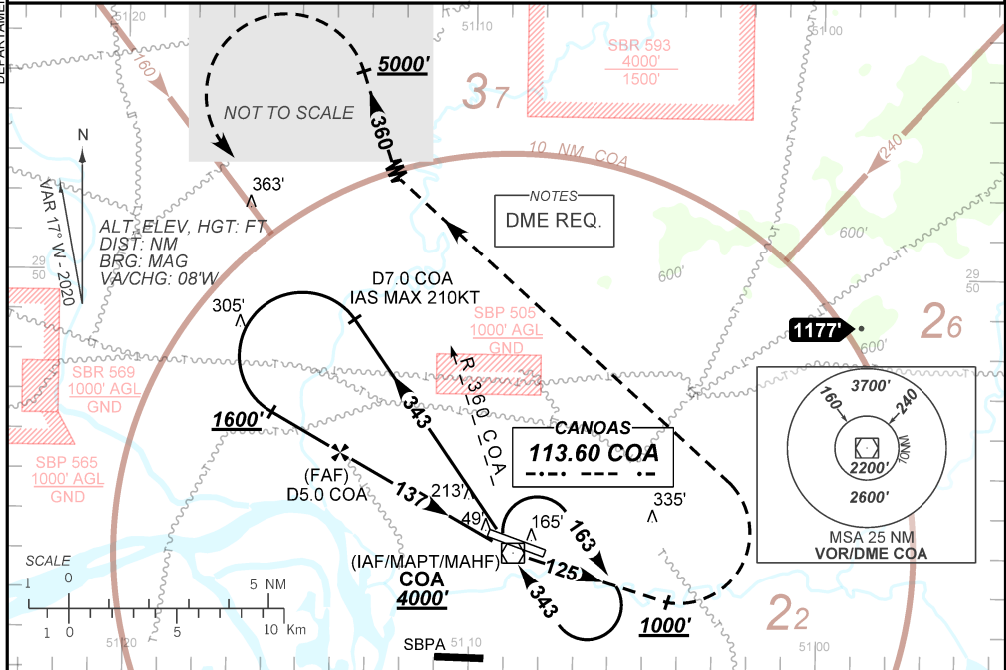
ATIS NIL	APP PALEGRE 119.00 120.10 120.55 128.90	TWR CANOAS 118.50 122.80 (MIL)	GNDC CANOAS 121.70
--------------------	---------------------------------------------------	------------------------------------------	------------------------------

VOR COA 113.60 MHz	FINAL CRS 137°	FAF 1420'	N/A	VOR MDA / (OCH): 500' / (490')
------------------------------	--------------------------	---------------------	-----	------------------------------------------

APCH Perdida: Subir para **5000'**. Manter proa **125** até **1000'**. Após, curvar à ESQUERDA para interceptar a RDL **360** do VOR COA até **5000'**. Então, curvar à ESQUERDA direto VOR COA para espera.
Missed APCH: Climb to **5000'**. Maintain heading **125** until **1000'**. After, turn LEFT to intercept **360** RDL COA VOR until **5000'**. Then, turn LEFT direct COA VOR for holding.

RMK: Não autorizado esperas simultâneas sobre Canoas e Porto Alegre no mesmo nível.
Unauthorized simultaneous holding over Canoas and Porto Alegre on the same flight level.

DEPARTAMENTO DE CONTROLE DO ESPAÇO AÉREO



TO THR 13 (NM)	6.2	4.2	1.4	0.0	THR ELEV 18'
TO COA (DME)	7.0	5.0	2.2	0.8	

	FAF	4.0	3.0	2.0	1.4	RWY13	Ground Speed (KT)	090	110	130	150	170	190
	1420	1342	1023	705	500	ALT	FPM	500	600	700	800	900	1000
	1402	1324	1005	687	490	(HGT)	FAF-MAPT	NA					

STRAIGHT-IN	CAT	A	B	C	D	E
	MDA / (OCH)	500' / (490')				
VOR	ALS/NO ALS/ RVR ALS (m)	800 / 1600 / NIL			1500 / 2300 / NIL	
	MDA / (OCH)	NA				
CIRCLING	VIS (m)	NA				

CHANGES: EAC. IDENT.