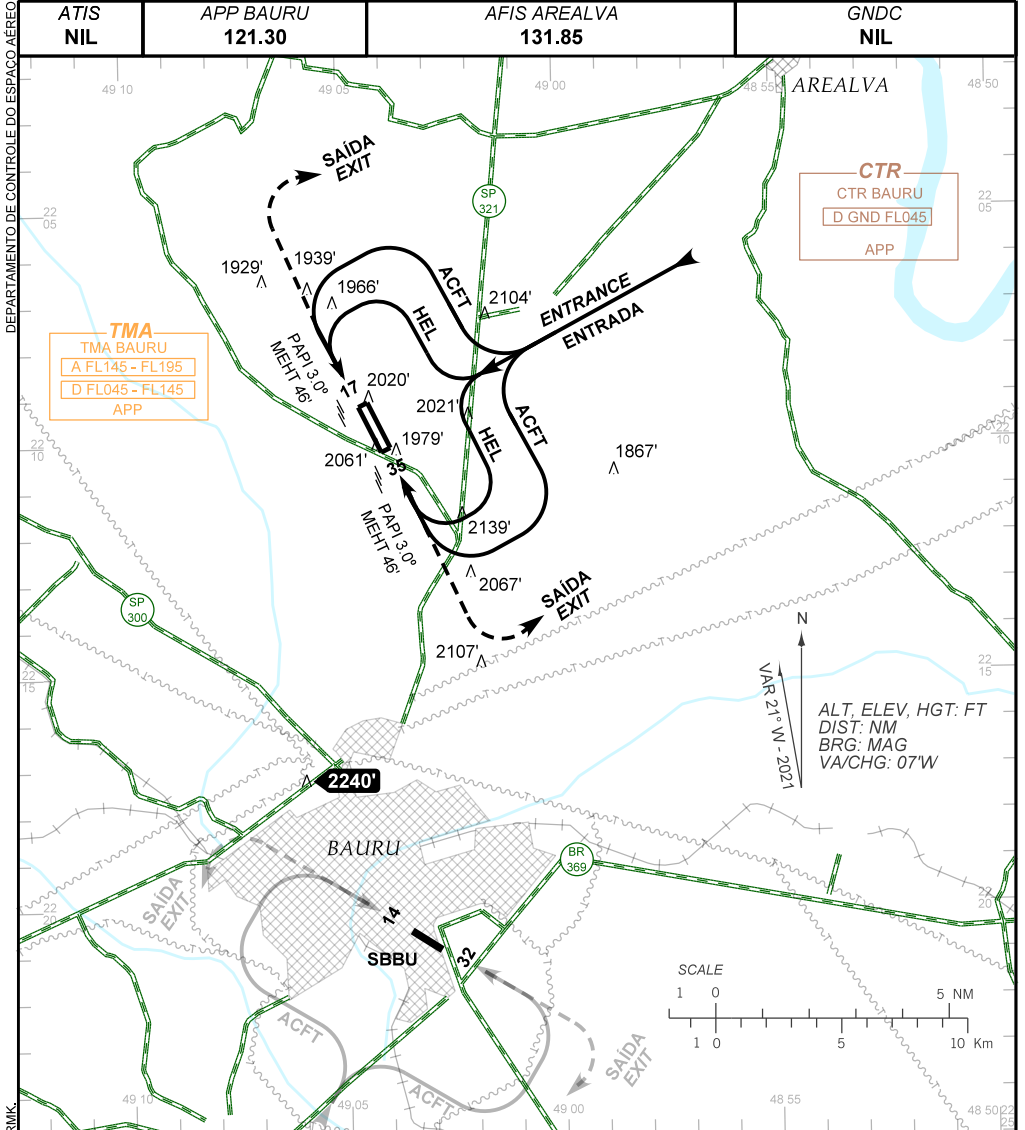


**VISUAL APPROACH CHART  
(VAC)**

**BAURU / Bauru - Arealva (SBAE)**

**AD ELEV: 1961'**

**RWY 17/35**



DEPARTAMENTO DE CONTROLE DO ESPAÇO AÉREO

CHANGES: FREQ. LAYOUT. OBST. PROC. RMK.

**RMK:**

**1 - ALTITUDES MÍNIMAS NO CIRCUITO DE TRÁFEGO:  
MINIMUM ALTITUDES IN THE TRAFFIC CIRCUIT:**

**1.1 - AERONAVES / AIRPLANES:**

CAT A, B, C : 3000'.  
CAT D, E : 3500'.

**1.2 - HELICÓPTEROS / HELICOPTERS : 3000'.**

**2 - INFO COMPLEMENTARES NO VERSO.**

**SEE REVERSE SIDE FOR ADDITIONAL INFO.**

— RMK —

3 - CIRCUITO DE TRÁFEGO SOMENTE PELO SETOR LESTE/ NORDESTE DO AERÓDROMO.  
*TRAFFIC CIRCUIT ONLY BY THE EAST / NORTHEAST AERODROME SECTOR.*

4 - PARA POUSO EM BAURU (SBBU), VER VAC DESTE AERÓDROMO.  
*FOR LANDING AT BAURU (SBBU) SEE VAC OF THIS AERODROME.*