

**INSTRUMENT APPROACH
CHART (IAC)**

PRESIDENTE PRUDENTE / Presidente Prudente (SBDN)

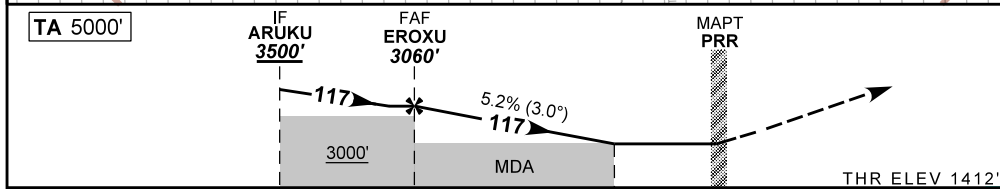
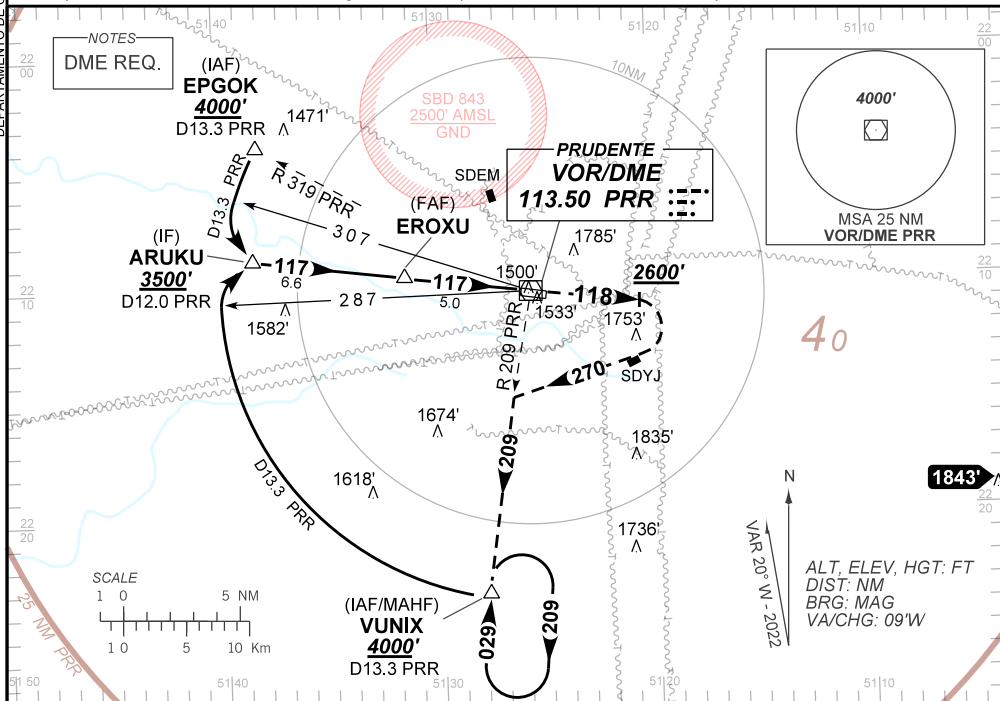
VOR Z RWY 12

AD ELEV: 1483'

ATIS NIL	APP PRUDENTE 125.45	TWR PRUDENTE 118.45	AFIS PRUDENTE 125.45	GNDC NIL
VOR PRR 113.50 MHz	FINAL CRS 117°	FAF: 3060'	N/A	VOR MDA / (OCH): 1770' / (360')

APCH Perdida: 1) Subir para **4000'**. Manter RDL **118** do VOR PRR até **2600'**. Após, curvar a DIREITA proa **270** para interceptar a RDL **209** VOR PRR para espera VUNIX. 2) IAS MAX 200KT até interceptar a RDL **209** VOR PRR.
Missed APCH: 1) Climb to **4000'**. Maintain **118** RDL PRR VOR until **2600'**. After, turn RIGHT heading **270** to intercept **209** RDL PRR VOR for holding at VUNIX. 2) IAS MAX 200KT until intercept **209** RDL PRR VOR.

DEPARTAMENTO DE CONTROLE DO ESPAÇO AEREO



TO THR 12 (NM)	11.6	5.0	1.0	0.0
TO PRR (DME)	12.0	5.4	1.4	0.4

	EROXU	4.0	3.0	2.0	1.0	RWY 12	Ground Speed (KT)	090	110	130	150	170	190
	3060	2736	2417	2099	1770	ALT	FPM	500	600	700	800	900	NA
	1648	1324	1005	687	360	(HGT)	FAF-MAPT	NA					

STRAIGHT-IN	CAT	A	B	C	D	E
	MDA / (OCH)	1770' / (360')				
VOR	ALS/NO ALS/ RVR ALS (m)	NIL / 1600 / NIL				
		NA				
CIRCLING	MDA / (OCH)	NA				
	VIS (m)	NA				

CHANGES: NIL