

STANDARD DEPARTURE CHART
INSTRUMENT (SID)

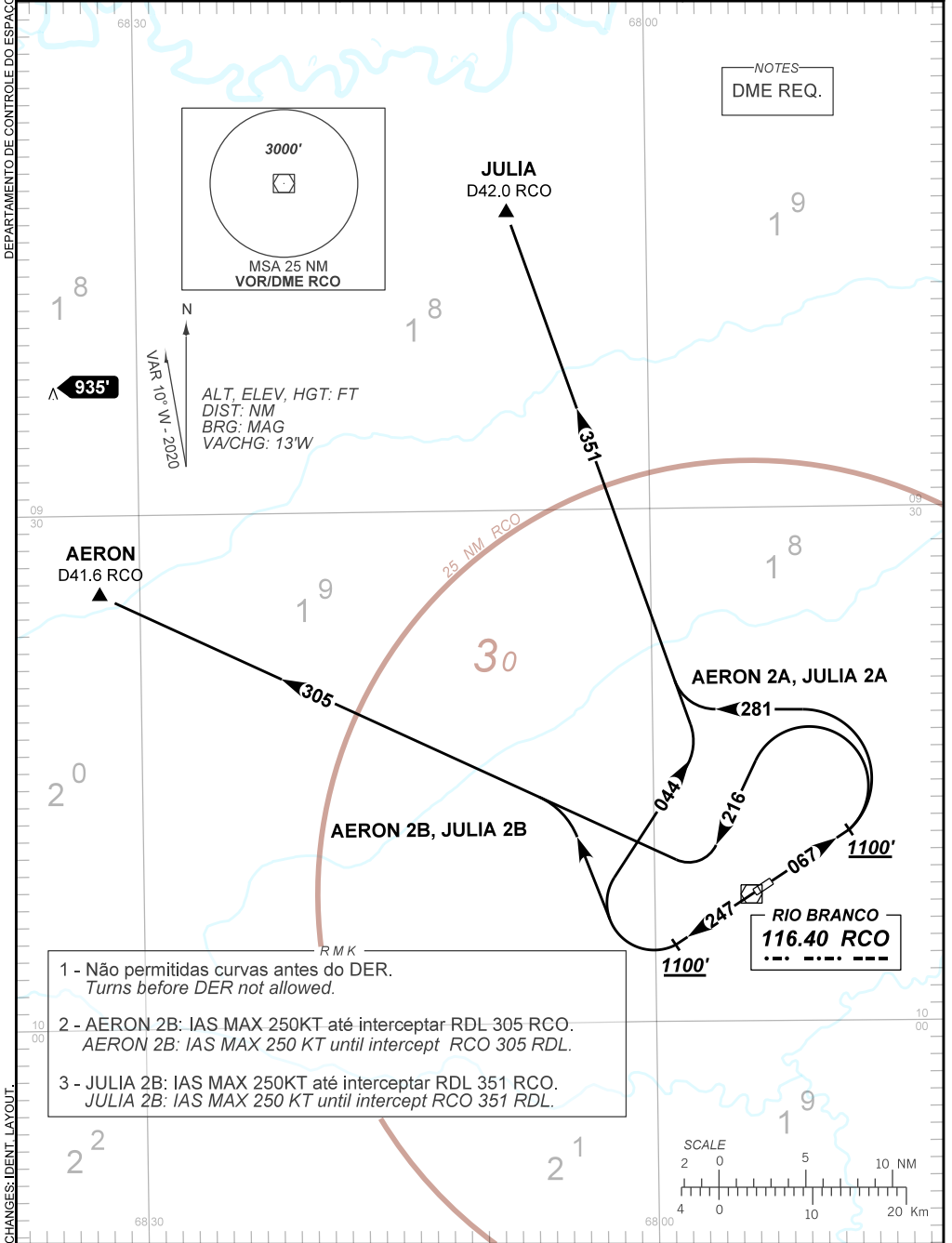
RIO BRANCO / Plácido de Castro, INTL (SBRB)

RWY 06 / 24

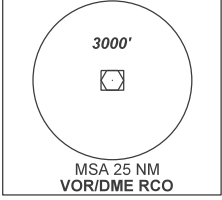
AD ELEV: 633'

AERON 2A, 2B - JULIA 2A, 2B

TA 3000'	TWR RIO BRANCO 118.70	APP RIO BRANCO 119.90	ACC AMAZÔNICO 126.50 135.25
----------	--------------------------	--------------------------	--------------------------------



NOTES
DME REQ.



ALT, ELEV, HGT: FT
DIST: NM
BRG: MAG
VA/CHG: 13'W

AERON
D41.6 RCO

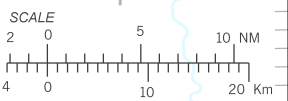
JULIA
D42.0 RCO

AERON 2A, JULIA 2A

AERON 2B, JULIA 2B

RIO BRANCO
116.40 RCO
- - - - -

- 1 - Não permitidas curvas antes do DER.
Turns before DER not allowed.
- 2 - AERON 2B: IAS MAX 250KT até interceptar RDL 305 RCO.
AERON 2B: IAS MAX 250 KT until intercept RCO 305 RDL.
- 3 - JULIA 2B: IAS MAX 250KT até interceptar RDL 351 RCO.
JULIA 2B: IAS MAX 250 KT until intercept RCO 351 RDL.



CHANGES: IDENT. LAYOUT.