

**INSTRUMENT APPROACH  
CHART (IAC)**

**PIRASSUNUNGA / Campo Fontenelle, MIL (SBYS)**

**USO EXCLUSIVO F-39  
F-39 USE ONLY**

**NAV APV RWY 20C**

(ONLY CAT E)

**AD ELEV: 1976'**

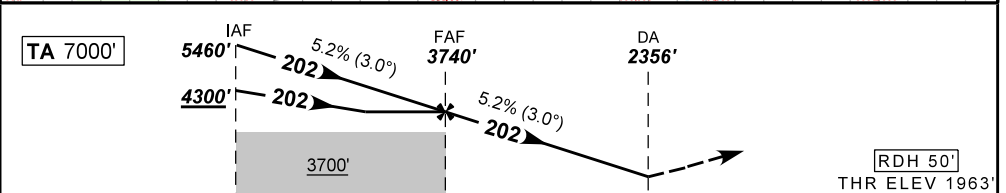
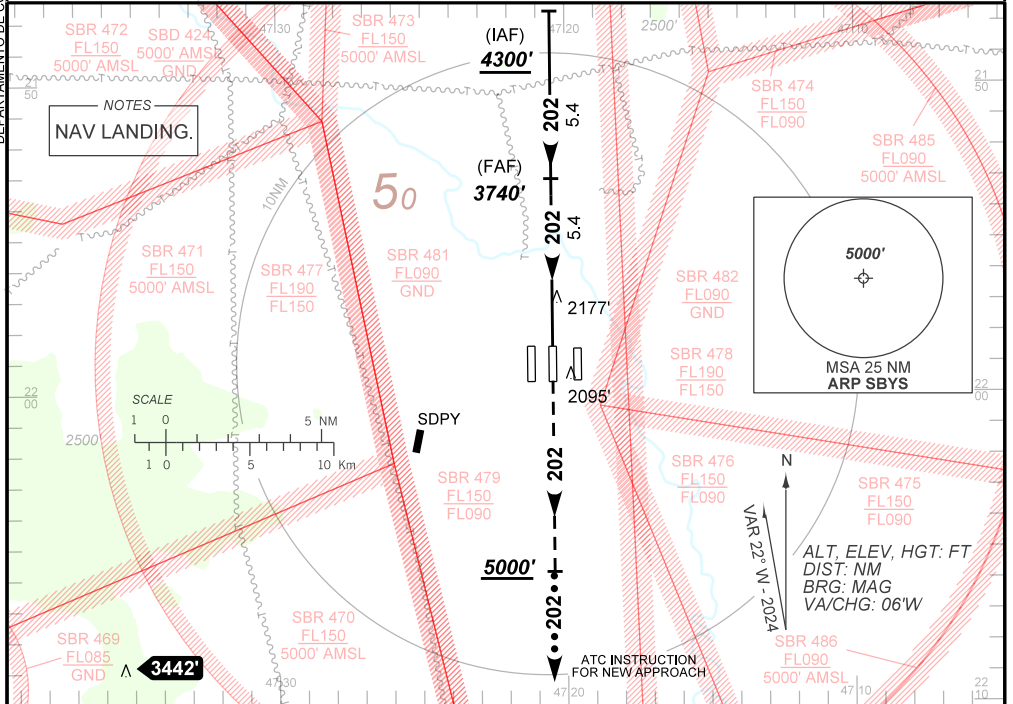
ATIS <b>127.70</b>	APP ACADEMIA <b>120.10 122.40 122.80 124.90 135.45</b>	TWR ACADEMIA <b>118.30</b>	GNDC ACADEMIA <b>121.90</b>
-----------------------	---	-------------------------------	--------------------------------

TEMP LNAV/VNAV <b>MIN -10°C / MAX 50°C</b>	FINAL CRS <b>202°</b>	FAF: <b>3740'</b>	NAV APV DA / (OCH): <b>2356' / (393')</b>	<b>N/A</b>
---	--------------------------	----------------------	--	------------

APCH Perdida: Subir para **5000'** no rumo **202°** e aguardar instruções ATC.

Missed APCH: Climb to **5000'** on course **202°** and expect further ATC instructions.

DEPARTAMENTO DE CONTROLE DO ESPAÇO AÉREO



TO THR 20C (NM) 10.8 5.4 1.1 0.0

	FAF	5.0	4.0	3.0	2.0	RWY20C	Ground Speed (KT)	090	110	130	150	170	190
	3740	3605	3287	2968	2650	ALT	FPM	500	600	700	800	900	1000
	1777	1642	1324	1005	687	(HGT)	FAF-MAPT				NIL		

STRAIGHT-IN	CAT	ONLY CAT E
	DA / (OCH)	2356' / (393')
NAV APV	ALS/NO ALS/ RVR ALS (m)	NIL / 1800 / NIL
		NA
CIRCLING	MDA / (OCH)	NA
	VIS (m)	

CHANGES: NEW CHART.