

**INSTRUMENT APPROACH  
CHART (IAC)**

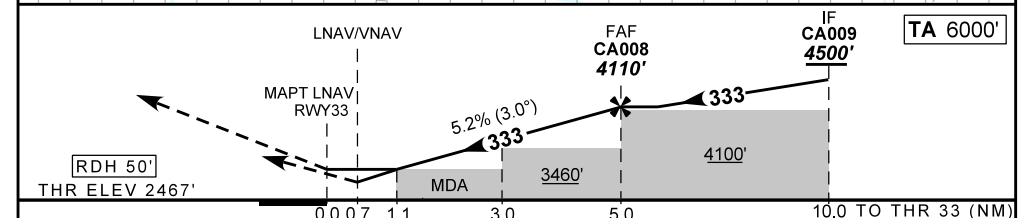
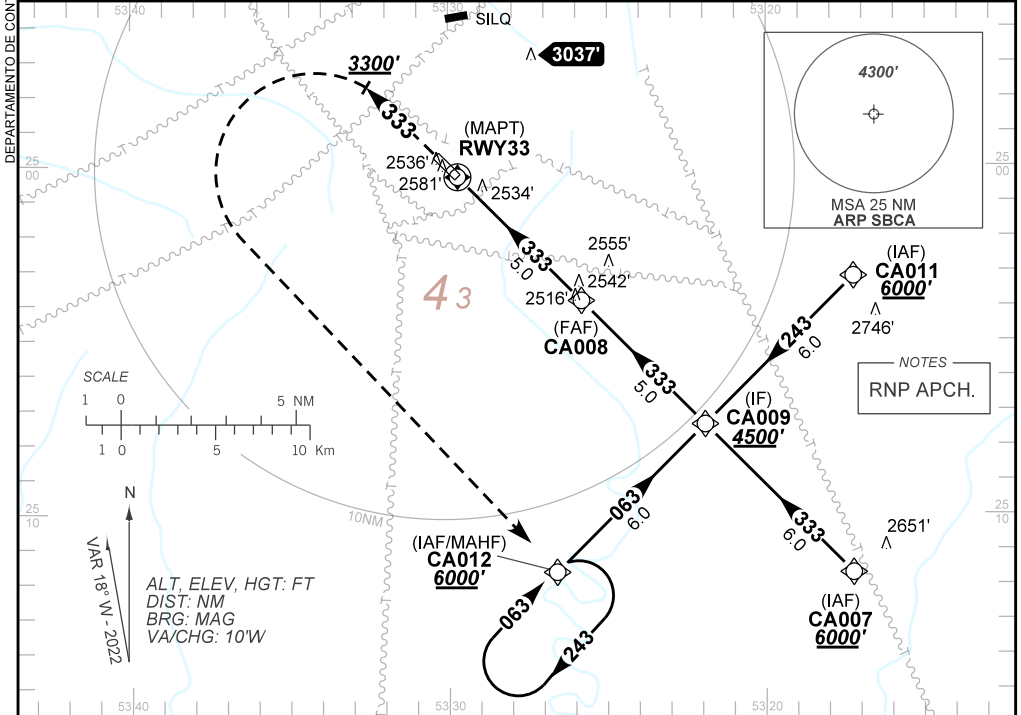
**CASCADEL / Coronel Adalberto Mendes da Silva (SBCA)**

**RNP RWY 33**

CAT (A,B,C)

**AD ELEV: 2490'**

ATIS NIL	APP NIL	AFIS CASCAVEL 131.85	GNDC NIL
TEMP LNAV/VNAV <b>MIN -10°C / MAX 50°C</b>	FINAL CRS 333°	FAF: 4110'	LNAV/VNAV DA / (OCH): <b>2732' / (265')</b>
APCH Perdida: Subir para <b>6000'</b> . Manter rumo <b>333</b> . Após, <b>3300'</b> curvar a ESQUERDA direto CA012 para espera.		LNAV MDA / (OCH): <b>2850' (390')</b>	
Missed APCH: Climb to <b>6000'</b> . Maintain course <b>333</b> . After, <b>3300'</b> turn LEFT direct CA012 for holding.			



RWY33	1,1	2,0	3,0	4,0	CA008		Ground Speed (KT)	090	110	130	150	170	190
ALT	2850	3154	3464	3791	4110		FPM	500	600	700	800	NA	
(HGT)	390	687	997	1324	1643		FAF-MAPT	NIL					

STRAIGHT-IN	CAT	A	B	C	D	E
	DA / (OCH)	2732' / (265')				
LNAV/VNAV	ALS/NO ALS/ RVR ALS (m)	NIL / 1300 / NIL				
	MDA / (OCH)	2850' / (390')				
LNAV	ALS/NO ALS/ RVR ALS (m)	NIL / 1600 / NIL		NIL / 1800 / NIL		
	MDA / (OCH)	NIL				
CIRCLING	MDA / (OCH)	NIL				
	VIS (m)	NIL				