

**INSTRUMENT APPROACH
CHART (IAC)**

RIO DE JANEIRO / Galeão - Antônio Carlos Jobim, INTL (SBGL)

AD ELEV: 28'

ILS W RWY 28

D-ATIS 127.60	APP RIO 128.90 119.35 119.00 120.55 129.80 134.40 121.25 124.95 134.95 125.95	TWR GALEÃO 118.00 118.20	GNDC GALEÃO 128.35 121.65
-------------------------	---	------------------------------------	-------------------------------------

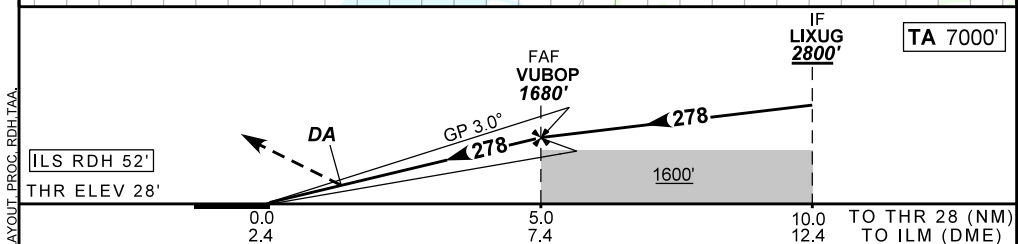
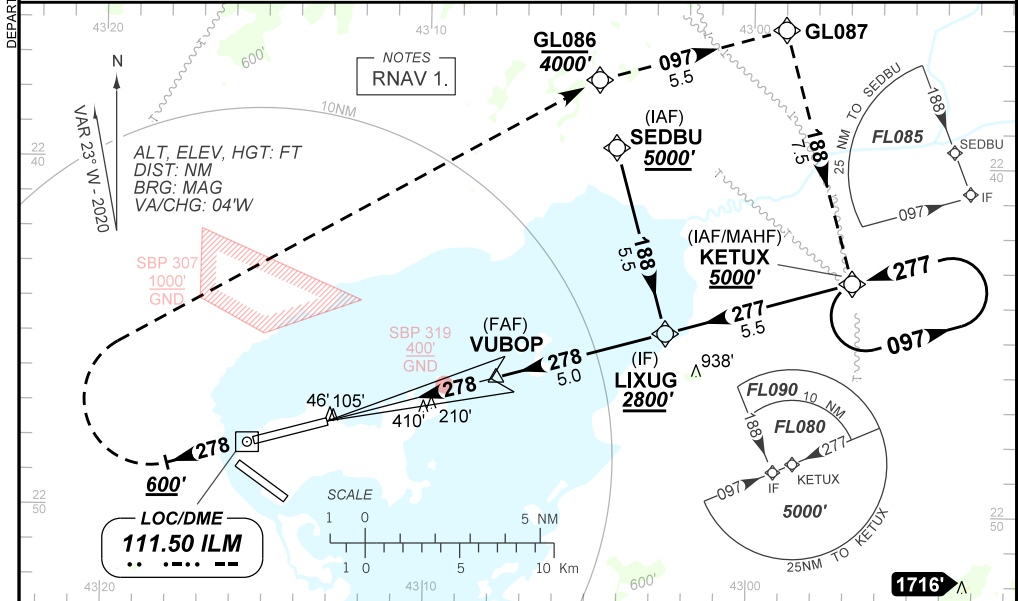
LOC ILM 111.50 MHz	FINAL CRS 278°	FAF: 1680'	CAT / DA / (OCH): REFER MNM	N/A
------------------------------	--------------------------	----------------------	---------------------------------------	------------

APCH Perdida: 1) Subir para **4000'**. Manter proa **278** até **600'**. Após, curvar à DIREIRA direto GL086. Após, subir para **5000'**, curvando à DIREITA no rumo **097** até GL087. Após, curva à DIREITA no rumo **188** até KETUX para espera. 2) IAS MAX 210KT.

Missed APCH: 1) Climb to **4000'**. Maintain heading **278** until **600'**. After, turn RIGHT direct to GL086. After, climb to **5000'**, turning RIGHT course **097** until GL087. After, turn RIGHT course **188** until KETUX for holding. 2) IAS MAX 210KT.

RMK: NIL.

DEPARTAMENTO DE CONTROLE DO ESPAÇO AÉREO



RWY28	NIL	Ground Speed (KT)	090	110	130	150	170	190
ALT	NIL	FPM	NIL					
(HGT)	NIL	FAF-MAPT	NA					

STRAIGHT-IN	CAT	A	B	C	D	E
CAT I	DA / (OCH)	228' / (200')				245' / (217')
	ALS/NO ALS/ RVR ALS (m)	1200 / 1200 / 1100				
CIRCLING	MDA / (OCH)	NA				
	VIS (m)	NA				

CHANGES: DEC/VAR, FREQ/EAC, IDENT, LAYOUT, PROC, RDH/TA, IAC