

**INSTRUMENT APPROACH CHART (IAC)**

**SÃO PAULO / Congonhas - Deputado Freitas Nobre (SBSB)**

**AD ELEV: 2634'**

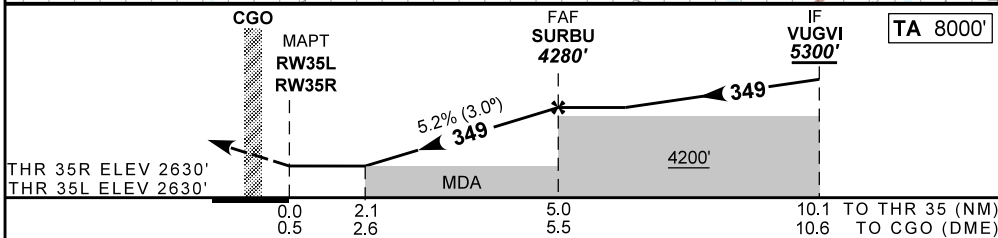
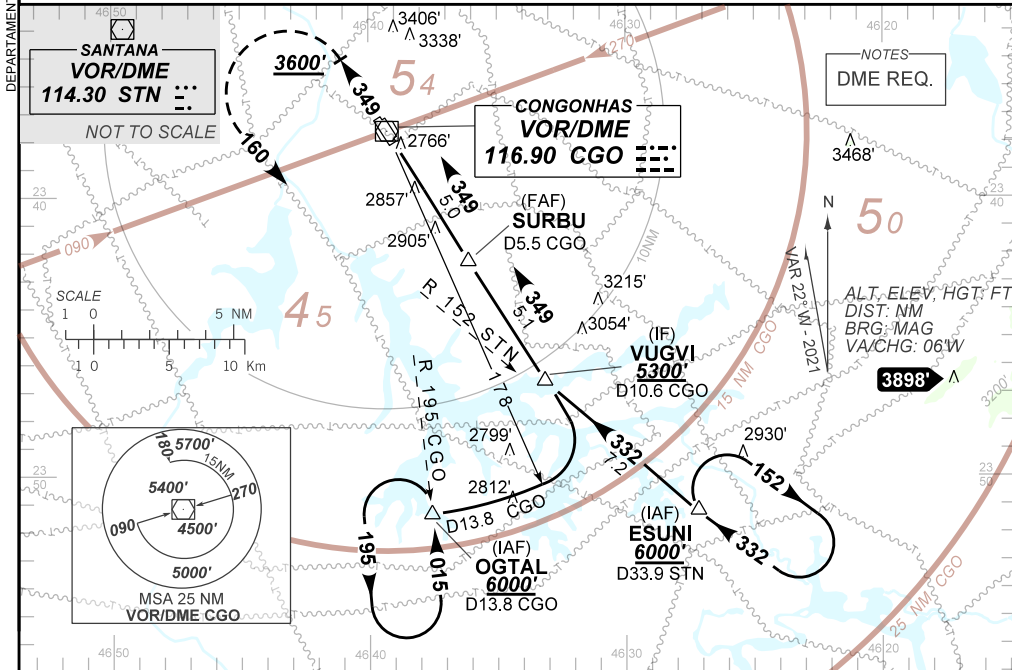
**VOR Y RWY 35L / 35R**

D-ATIS <b>127.65</b>	APP SÃO PAULO <b>119.15 120.45 120.85 129.75 133.85</b>	TWR SÃO PAULO <b>118.05 127.15</b>	GNDC SÃO PAULO <b>121.90</b>
VOR / DME CGO <b>116.90</b>	FINAL CRS <b>349°</b>	FAF <b>4280'</b>	N/A
VOR		MDA / (OCH): <b>3360' / (730')</b>	

APCH Perdida: Subir para **6000'**. Manter proa **349°** e gradiente MNM 4% até **3600'**. Após, curvar à ESQUERDA proa **160°** para interceptar a RDL **195°** VOR CGO para OGTL para espera.

Missed APCH: Climb to **6000'**. Maintain heading **349°** and MNM gradient 4% until **3600'**. After, Turn LEFT heading **160°** to intercept **195°** RDL CGO VOR to OGTL for holding.

RMK: IAS MAX 220KT até interceptar / until intercept **195°** RDL CGO VOR.



RWY35	2.1	3.0	4.0	SURBU			Ground Speed (KT)	090	110	130	150	170	190
ALT	3360	3635	3954	4280			FPM	500	600	700	800	900	NA
(HGT)	730	1005	1324	1650			FAF-MAPT			NA			

STRAIGHT-IN	CAT	A	B	C	D	E
	MDA / (OCH)	3360' / (730')				NA
VOR	ALS/NO ALS/RVR ALS (m)	NIL / 3400 / NIL				NA
	MDA / (OCH)	NA				
CIRCLING	VIS (m)	NA				

AIRAC AMDT 2505A1 15 MAY 25

SBSB\_IAC\_00U 1/1  
IAC VOR Y RWY 35L / 35R

CHANGES: THR ELEV. WPT.

DEPARTAMENTO DE CONTROLE DO ESPAÇO AÉREO