

INSTRUMENT APPROACH  
CHART (IAC)

SOROCABA / Sorocaba (SDCO)

RNP Z RWY 01

(CAT A,B,C)

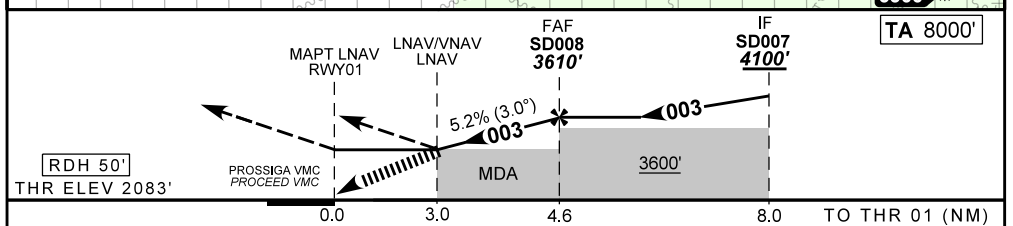
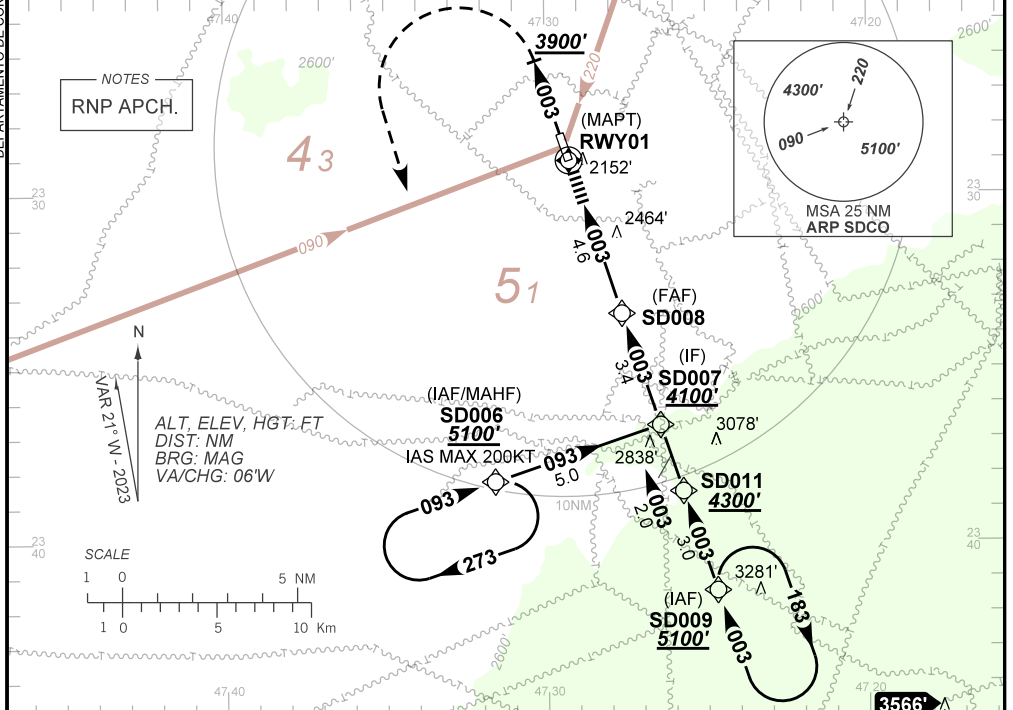
AD ELEV: 2083'

ATIS 127.775	APP SÃO PAULO 129.50 119.25 119.80	AFIS SOROCABA 118.80	GNDC SOROCABA 121.80	TWR SOROCABA 118.80
-----------------	---------------------------------------	-------------------------	-------------------------	------------------------

TEMP LNAV/VNAV MIN 0° C / MAX 50°	FINAL CRS 003°	FAF: 3610'	LNAV/VNAV DA / (OCH): 3083' / (1000')	LNAV MDA / (OCH): 3090' / (1000')
--------------------------------------	-------------------	---------------	--	--------------------------------------

APCH Perdida: Subir para **5100'**. Manter rumo **003** até **3900'**. Após, curvar à ESQUERDA direto SD006 para espera.

Missed APCH: Climb to **5100'**. Maintain course **003** until **3900'**. After, turn LEFT direct SD006 for holding.



RWY01	3.0	4.0	SD008							
ALT	3090	3407	3610							
(HGT)	1000	1324	1527							
Ground Speed (KT)	090	110	130	150	170	190				
FPM	500	600	700	800	NA					
FAF-MAPT	NIL									

STRAIGHT-IN	CAT	A	B	C	D	E
	DA / (OCH)	3083' / (1000')				
LNAV/VNAV	ALS/NO ALS/ RVR ALS (m)	NIL / 5000 / NIL			NA	
	MDA / (OCH)	3090' / (1000')				
LNAV	ALS/NO ALS/ RVR ALS (m)	NIL / 5000 / NIL			NA	
	MDA / (OCH)					
CIRCLING	MDA / (OCH)					
	VIS (m)					

DEPARTAMENTO DE CONTROLE DO ESPAÇO AÉREO

CHANGES: F. LAYOUT.