

STANDARD DEPARTURE CHART
INSTRUMENT (SID)

CURITIBA / Bacacheri (SBBI)

RWY 18

RNAV OPSET 1A

AD ELEV: 3059'

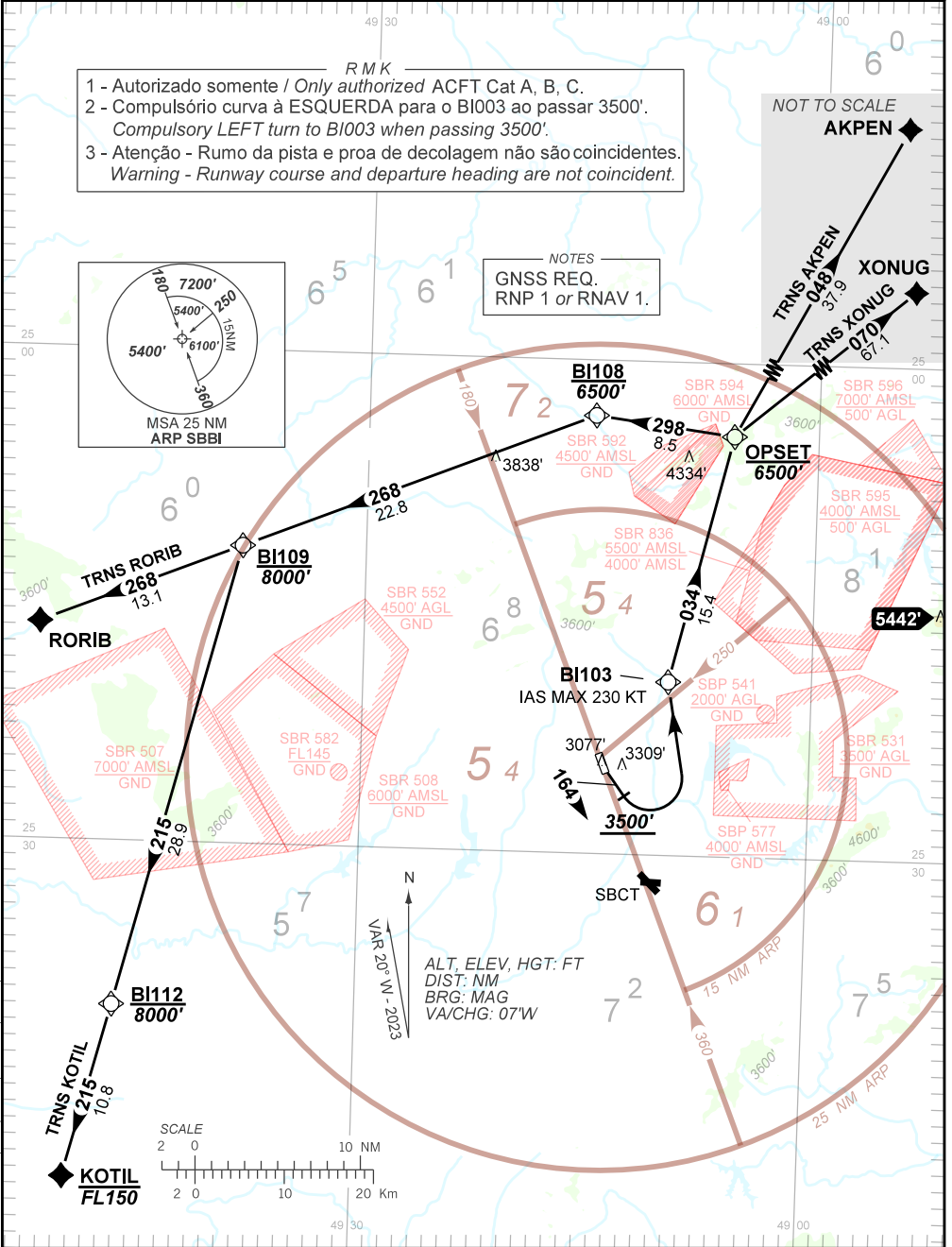
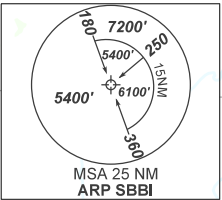
TA 9000'	ATIS 132.325	TWR BACACHERI 118.90	AFIS BACACHERI 118.90 119.95	APP CURITIBA 119.70 119.95 120.65 120.95 129.55 133.15	ACC CURITIBA 126.95 128.25 127.20 125.80 124.775 135.00 132.80 126.50
----------	--------------	----------------------	------------------------------	---	--

DEPARTAMENTO DE CONTROLE DO ESPAÇO AÉREO

CHANGES: AMA, EAC, IDENT, LAYOUT, PROC, VAR.

- RMK
- 1 - Autorizado somente / Only authorized ACFT Cat A, B, C.
 - 2 - Compulsório curva à ESQUERDA para o BI003 ao passar 3500'.
Compulsory LEFT turn to BI003 when passing 3500'.
 - 3 - Atenção - Rumo da pista e proa de decolagem não são coincidentes.
Warning - Runway course and departure heading are not coincident.

NOTES
GNSS REQ.
RNP 1 or RNAV 1.



NOT TO SCALE
AKPEN
XONUG