

**INSTRUMENT APPROACH
CHART (IAC)**

CARACARA / Caracara, MIL (SBQI)

**USO EXCLUSIVO ACFT MILITARES
MILITARY ACFT ONLY**

AD ELEV: 184'

RNP RWY 04

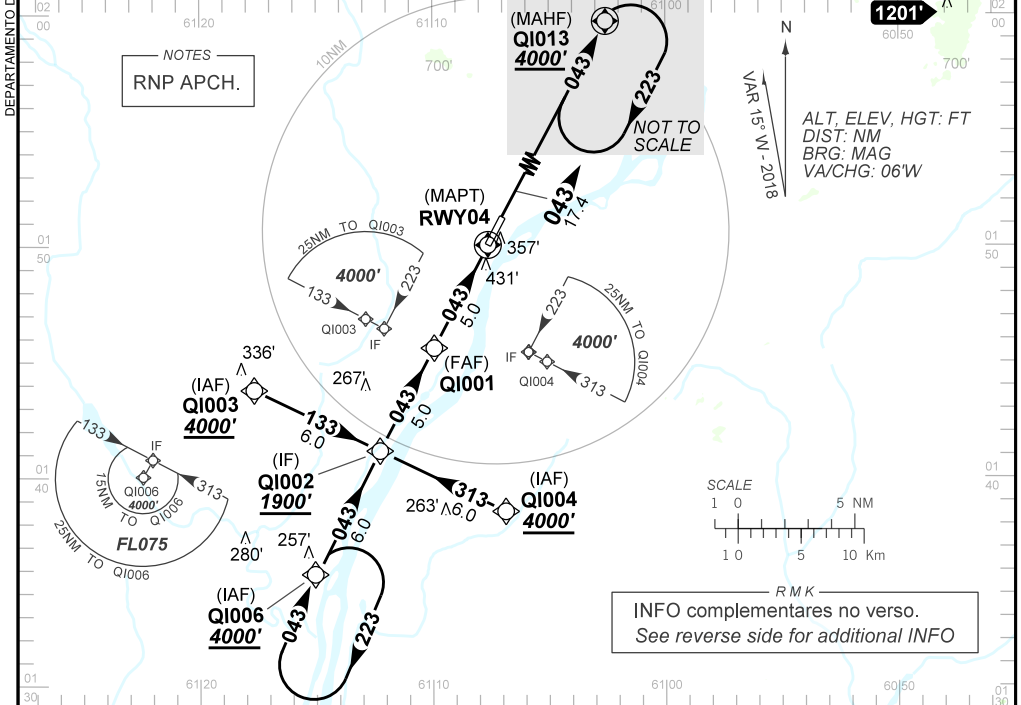
ATIS NIL	APP NIL	TWR NIL		APP BOA VISTA 120.10
N/A	FINAL CRS 043°	FAF: 1830'	N/A	LNAV RASS (SBBV) MDA / (OCH): 980' / (800')

APCH Perdida: Subir para **4000'**. Manter rumo **043** até QI013 para espera.

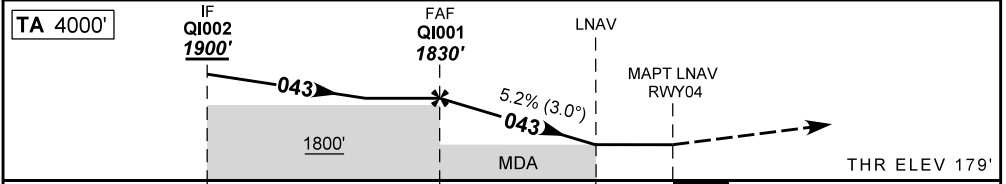
Missed APCH: Climb to **4000'**. Maintain course **043** up to QI013 for holding.

RMK: 1) Realização do procedimento condicionada às regras específicas definidas pelo COMAER.

1) Procedure must be carried out according to specific rules defined by COMAER.



INFO complementares no verso.
See reverse side for additional INFO



TO THR 04 (NM)	10.0	5.0	2.4	0.0								
	QI001	4.0	3.0	2.4	RWY04	Ground Speed (KT)	090	110	130	150	170	190
	1830	1503	1184	980	ALT	FPM	500	600	700	800	900	NA
	1651	1324	1005	800	(HGT)	FAF-MAPT	NA					

STRAIGHT-IN	CAT	A	B	C	D	E
	MDA / (OCH)	NA				
LNAV	ALS/NO ALS/ RVR ALS (m)	NA				
	MDA / (OCH)	980' / (800')				
LNAV RASS (SBBV)	ALS/NO ALS/RVR ALS (m)	NIL / 2000 / NIL		NIL / 3600 / NIL		
	MDA / (OCH)	NA				
CIRCLING	VIS (m)	NA				

AIRAC AMDT 2213A1 29 DEC 22

USO EXCLUSIVO ACFT MILITARES / MILITARY ACFT ONLY

**SBQI_IAC_00B 1/2
IAC RNP RWY 04**

DEPARTAMENTO DE CONTROLE DO ESPAÇO AÉREO

CHANGES: ALT, EAC, IDENT, LAYOUT

DEPARTAMENTO DE CONTROLE DO ESPAÇO AÉREO

— R M K —

- 2 - Antes de iniciar o procedimento informar posição e intenção de voo na FREQ 123.45 MHz.
Before starting the procedure, report position and flight intentions at FREQ 123.45 MHZ.
- 3 - Utilizar o altímetro de SBBV.
Use altimeter setting from SBBV.
- 4 - Após a MDA, ao prosseguir para pouso, atentar para condições da pista e para a possibilidade de incursões em pista.
After the MDA, when proceeding for landing, watch field conditions to avoid runway incursions.
- 5 - Dados complementares:
Complementary data:

IDENT	LATITUDE/LONGITUDE
QI001	N 01:45.59 / W 61:09.95
QI002	N 01:41.14 / W 61:12.27
QI003	N 01:43.95 / W 61:17.57
QI004	N 01:38.33 / W 61:06.97
QI006	N 01:35.80 / W 61:15.06
QI013	N 02:05.47 / W 60:59.55
RWY04	N 01:50.03 / W 61:07.62

CHANGES: ALT, EAC, IDENT, LAYOUT.