

**INSTRUMENT APPROACH  
CHART (IAC)**

**CURITIBA / Afonso Pena, INTL (SBCT)**

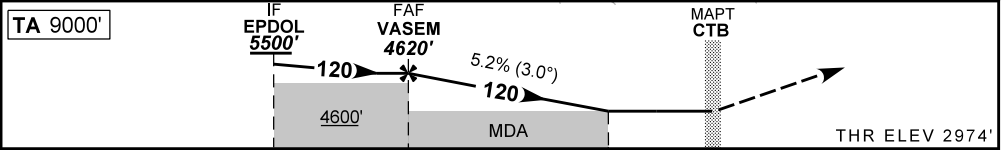
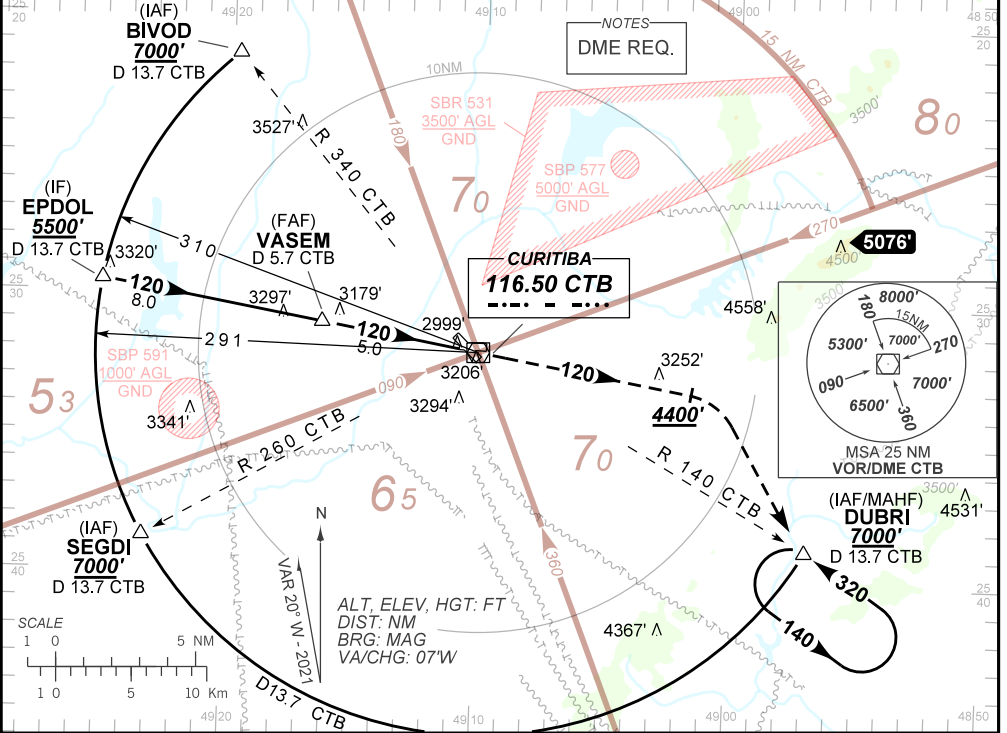
**AD ELEV: 2989'**

**VOR RWY 11**

D-ATIS <b>127.80</b>	APP CURITIBA <b>119.70 119.95 120.65 120.95 129.55 133.15</b>			TWR CURITIBA <b>118.15</b>	GND: CURITIBA <b>121.90</b>
VOR CTB <b>116.50 MHZ</b>	FINAL CRS <b>120°</b>	FAF: <b>4620'</b>	N/A	VOR MDA / (OCH): <b>3570' / (600')</b>	

APCH Perdida: 1) Subir para **7000'**. Manter a RDL **120** do VOR CTB até **4400'**. Após, curvar à DIREITA para interceptar RDL **140** do VOR CTB até DUBRI para espera. 2) IAS MAX 190KT.  
Missed APCH: 1) Climb to **7000'**. Maintain **120** RDL CTB VOR until **4400'**. After, turn RIGHT to intercept **140** RDL CTB VOR to DUBRI for holding. 2) IAS MAX 190 KT.

DEPARTAMENTO DE CONTROLE DO ESPAÇO AEREO



TO THR 11 (NM)	13.0	5.0	1.7	0.0
TO CTB (DME)	13.7	5.7	2.4	0.7

VASEM	4.0	3.0	2.0	1.7	RWY11	Ground Speed (KT)	090	110	130	150	170	190
4620	4298	3979	3661	3570	ALT	FPM	500	600	700	800	900	NA
1646	1324	1005	687	600	(HGT)	FAF-MAPT	NA					

STRAIGHT-IN	CAT	A	B	C	D	E
VOR	MDA / (OCH)	3570' / (600')				NA
	ALS/NO ALS/ RVR ALS (m)	NIL / 1600 / NIL		NIL / 2700 / NIL		
CIRCLING	MDA / (OCH)	NA				
	VIS (m)					

CHANGES: FREQ. LAYOUT. PROC. VAR.