

**INSTRUMENT APPROACH  
CHART (IAC)**

**GUARATINGUETÁ / Guaratinguetá (SBGW)**

**AD ELEV: 1761'**

**NDB B RWY 20**

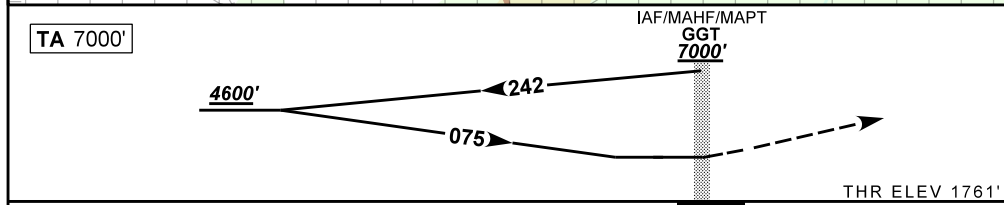
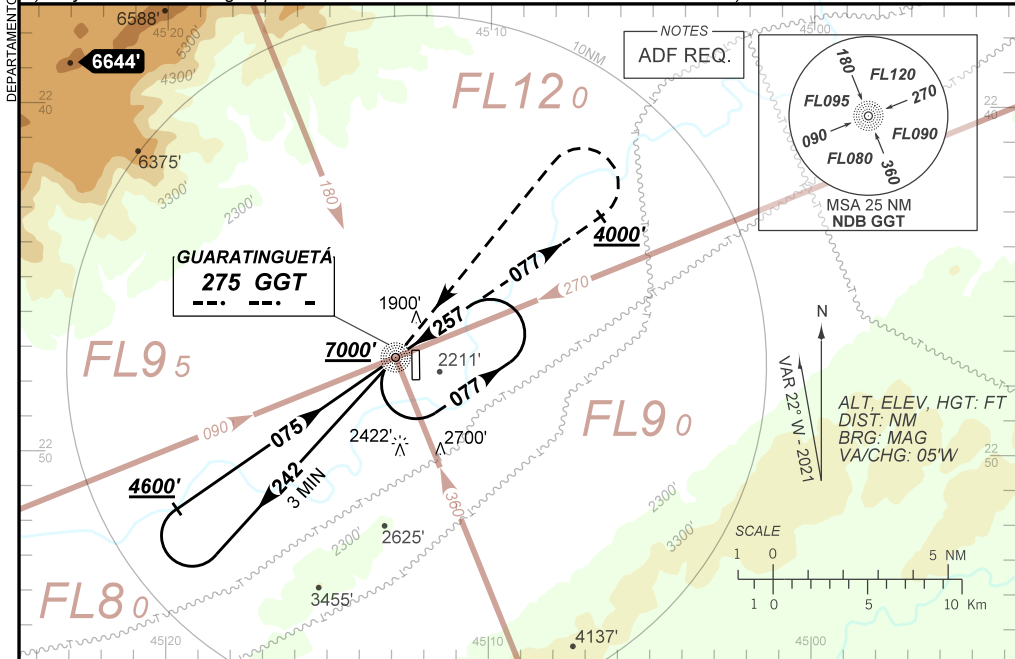
<b>ATIS</b> NIL	<b>APP GUARÁ</b> 120.15	<b>TWR GUARÁ</b> 118.15	<b>GNDC</b> NIL
--------------------	----------------------------	----------------------------	--------------------

<b>NDB GGT</b> 275 KHz	<b>FINAL CRS</b> 075°	<b>N/A</b>	<b>N/A</b>	<b>NDB</b> MDA / (OCH): <b>REFER TO MNM</b>
---------------------------	--------------------------	------------	------------	--

APCH Perdida: Subir para **7000'**. Manter QDR **077'** do NDB GGT até cruzar **4000'**. Após, curvar à ESQUERDA direto NDB GGT para espera.

Missed APCH: Climb to **7000'**. Maintain **077'** QDR GGT NDB until passing **4000'**. After, turn LEFT direct to GGT NDB for holding.

RMK: 1) Atenção a grupo de antenas no setor Sul distante 2.2NM da THR 02. 2) IAS MAX 170KT.  
1) Pay attention to the group of antennas on South Sector 2.2NM from THR 02. 2) MAX IAS 170KT.



<b>NIL</b>	<b>RWY20</b>	<b>Ground Speed (KT)</b>	090	110	130	150	170	190
<b>NIL</b>	<b>ALT</b>	<b>FPM</b>	<b>650</b>					<b>NIL</b>
<b>NIL</b>	<b>(HGT)</b>	<b>FAF-MAPT</b>	<b>NA</b>					

<b>STRAIGHT-IN</b>	<b>CAT</b>	<b>A</b>	<b>B</b>	<b>C</b>	<b>D</b>	<b>E</b>
<b>CIRCLING</b>	<b>MDA / (OCH)</b>	<b>2530' / (770')</b>	<b>2720' / (960')</b>	<b>3020' / (1260')</b>	<b>NA</b>	
	<b>VIS (m)</b>	1600	2400	4800		

CHANGES: LAYOUT, VAR.